

NOTICE TO MARINERS M25 of 2020

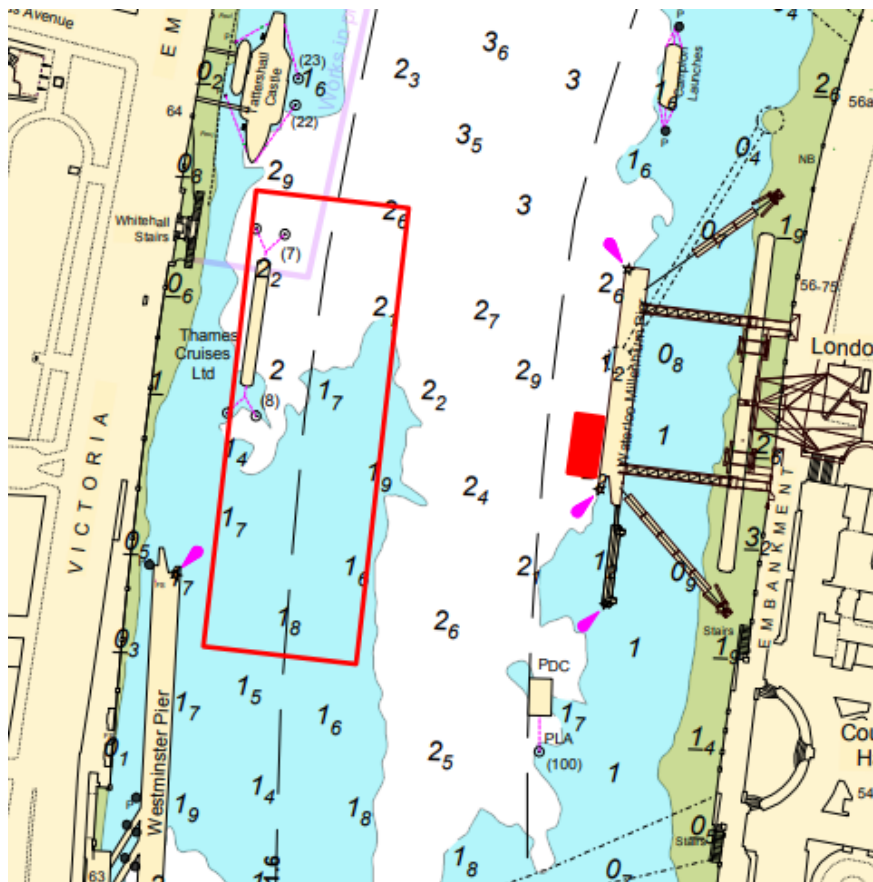
LAMBETH REACH LOCAL TRAFFIC CONTROL EXCLUSION ZONE

On Thursday 30th July 2020 contractors working on behalf of River Film and Ad Health and Safety will moor the barge NUMITOR alongside Waterloo Millennium Pier, where it will remain in situ until the early hours of 1st August. The barge will be used to facilitate an event on the pier on the Friday 31st July 2020 and whilst moored on the pier it will be marked as follows:

By Day: Tiger Board will be used to highlight the extremities of the barge.

By Night: The upriver and downriver extremities of the barge will be marked with a single white light.

On Friday 31st July 2020 the event will take place on board the barge NUMITOR and Waterloo Millennium Pier between 20:00 and 23:00. Filming operations will be undertaken to capture the event with the EQUITY used as a filming platform, and the LIMA LIMA facilitating drone operations within the area marked on the chartlet below. Neither vessel will impede vessels navigating within the channel.



Local Traffic Control will be undertaken from a PLA Harbour Service Launch stationed in the vicinity of the event. All vessels intending to navigate between Waterloo Bridge and Lambeth Bridge are to call 'WATERLOO CONTROL' on VHF Channel 14 as follows:

- Inbound at Waterloo Bridge
- Outbound at Lambeth Bridge
- Prior to leaving a berth or mooring between Waterloo Bridge and Lambeth Bridge

All vessels are to navigate in this area with caution, maintaining a continuous watch on VHF Channel 14 and follow the instructions from the attending Harbour Service Launch exhibiting flashing blue lights.

Further details will be promulgated by **London VTS** on VHF Channel 14 during routine river broadcasts.

24 July 2020

Port of London Authority
London River House, Royal Pier Road,
Gravesend, Kent DA12 2BG

**Sarah Macleod - Acting
Harbour Master (Upper)**



EXPIRY DATE: 1st August 2020
TO RECEIVE FUTURE NOTICES TO MARINERS BY **E-MAIL**,
PLEASE REGISTER VIA OUR WEBSITE www.pla.co.uk
**Telephone calls, VHF radio traffic, CCTV and radar traffic images may
be recorded in the VTS Centres at Gravesend and Woolwich**
All Current Notices to Mariners can be found here -
**[http://www.pla.co.uk/Safety/Regulations-and-Guidance/Notices-to-
Mariners/Notices-to-Mariners](http://www.pla.co.uk/Safety/Regulations-and-Guidance/Notices-to-Mariners/Notices-to-Mariners)**

