

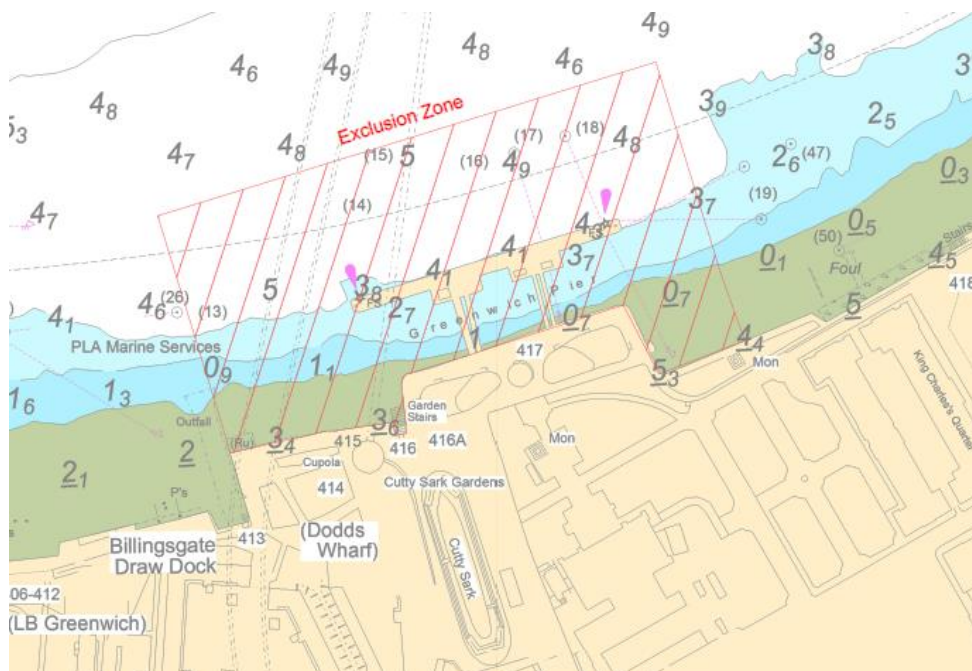
NOTICE TO MARINERS M26 of 2018

GREENWICH REACH GREENWICH PIER TEMPORARY PIER CLOSURE AND MAINTENANCE WORKS

Contractors working on behalf of London River Services will be conducting the final stages of maintenance works to Greenwich Pier. These works will include the reinstatement of the lower end of the pier and replacement of brows.

Reinstatement of Lower pontoons

On **Monday 26th March 2018** Greenwich Pier will be closed to navigation to allow for the reinstatement of the lower pontoons. This work will be undertaken by LONDON TITAN accompanied by the DRIFTWOOD II & DRIFTWOOD III. All vessels involved in the works will maintain a continuous listening watch on VHF Ch. 14. During these works, a temporary exclusion zone will be established extending 75m from Greenwich Pier, as detailed in the chartlet below. On **Wednesday 28th March 2018** at **06:00** the upper end of Greenwich Pier will re-open to navigation and the lower end will remain closed to navigation.



Replacement of Brows

On **Wednesday 28th March 2018** the lower brows will be reinstated at Greenwich Pier. The crane barge TILMAN will be located on the lower end of Greenwich Pier to begin lifting operations. On **Friday 30th March 2018** Greenwich Pier in its entirety will re-open to navigation.

Vessels navigating in the vicinity of Greenwich Pier are to do so with particular caution with due regard of the works taking place. London VTS will broadcast requests for vessels to “proceed with caution” or “proceed at slow speed”, as described in the Permanent Notices to Mariners 4 of 2014, as required by the works. International Code flags “Romeo Yankee” will be displayed when this is in effect.

Further details will be broadcast by London VTS on VHF Channel 14.

12 March 2018

Port of London Authority
London River House, Royal Pier Road,
Gravesend, Kent DA12 2BG

BOB BAKER
CHIEF HARBOUR MASTER



EXPIRY DATE: 2nd April 2018
TO RECEIVE FUTURE NOTICES TO MARINERS BY **E-MAIL**,
PLEASE REGISTER VIA OUR WEBSITE www.pla.co.uk
**Telephone calls, VHF radio traffic, CCTV and radar traffic images may
be recorded in the VTS Centres at Gravesend and Woolwich**

