

## **NOTICE TO MARINERS M28 of 2018**

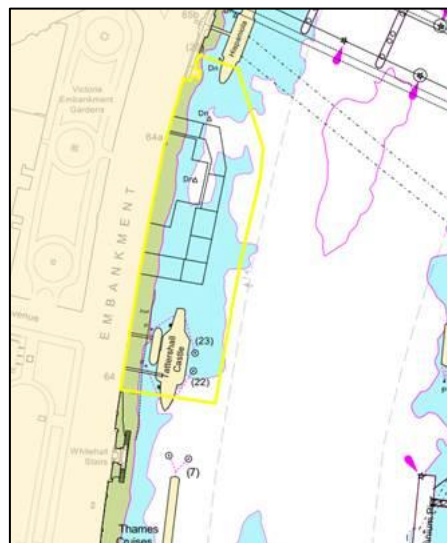
### LAMBETH REACH

# VICTORIA EMBANKMENT COFFERDAM CONSTRUCTION WORKS

Notice to Mariners M69 of 2017 and M103 of 2017 are hereby cancelled.

Mariners are advised that contractors working on the Tideway Tunnel Project will continue works which involve constructing a twin cofferdam wall between Charing Cross Bridge and the Tattershall Castle on the Victoria Embankment.

Please see the chartlet below depicting the location of the construction works and the cofferdam as completed.



The works which will include dredging, diving, sheet piling and back filling operations will take place using a variety of barges including crane barges, jack up barges, supply barges, tugs and Multicat vessels and are expected to take a further 5 months. The vessels involved will maintain a continuous listening watch on VHF channel 14. At times RY flags may be exhibited in conjunction with “proceed with caution / slow down requests” in VTS broadcasts.

No vessels other than those engaged in the works shall enter the navigation exclusion zone depicted by the yellow line on the chartlet.

Vessels are requested to be mindful of the nature of the works, their wash when passing the works and to pass at a safe distance particularly from any yellow pellet buoys which may be marking anchors, sinkers or other under water obstructions.

At times there may be a requirement to shut no 1 arch of Charing Cross Bridge. This will be the subject of further notices to mariners to reflect that requirement.

Further details will be broadcast by London VTS on VHF Channel 14.

---

**26 March 2018**

Port of London Authority  
London River House, Royal Pier Road,  
Gravesend, Kent DA12 2BG

**BOB BAKER**  
**CHIEF HARBOUR MASTER**



EXPIRY DATE: 30<sup>th</sup> September 2018  
TO RECEIVE FUTURE NOTICES TO MARINERS BY **E-MAIL**,  
PLEASE REGISTER VIA OUR WEBSITE [www.pla.co.uk](http://www.pla.co.uk)  
**Telephone calls, VHF radio traffic, CCTV and radar traffic images may  
be recorded in the VTS Centres at Gravesend and Woolwich**

