

NOTICE TO MARINERS

M32 of 2019

UPPER POOL TO BARN ELMS REACH APP STAND UP PADDLEBOARD WORLD CHAMPIONSHIP RACE SATURDAY 18th MAY 2019 LOCAL TRAFFIC CONTROL

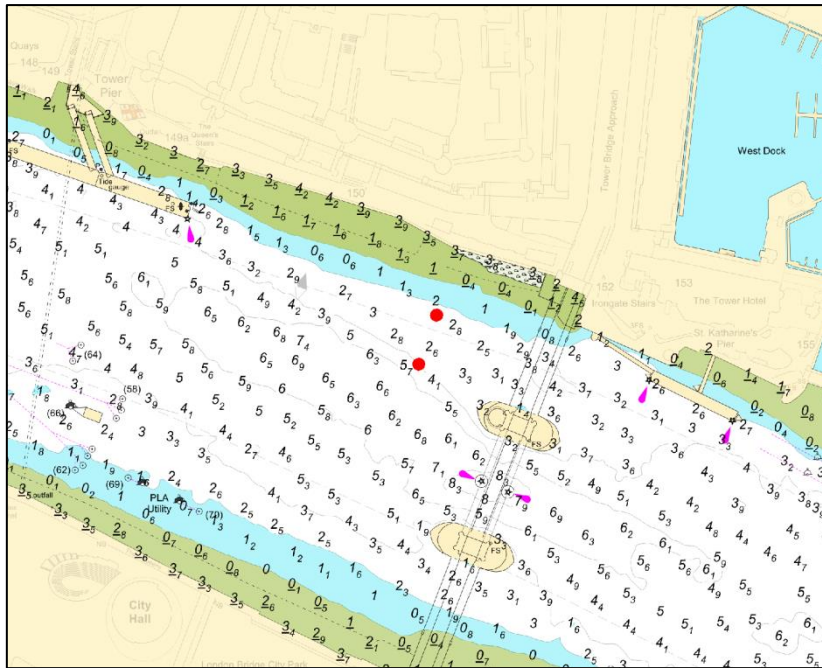
On Saturday 18th May 2019 APP World Tour will be hosting the Stand Up Paddleboard (SUP) World Championship between Tower Bridge and Putney Hard. There will be 50 participants taking part in this event.

Preparations for the race will commence at 06:15, which includes installing five inflatable floats. These will be positioned in the vicinity of Tower Bridge, Westminster Bridge, Chelsea Bridge, Battersea Bridge and Putney Bridge see attached chartlets for further details.

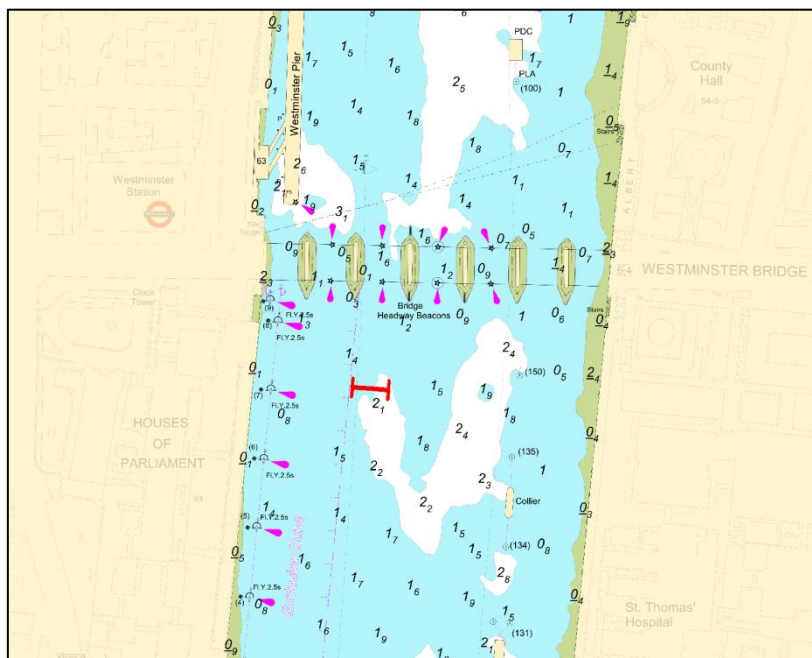
SUP's will launch from Horselydown Stairs/Butlers Wharf Pier from 08:50, with the race commencing at 09:35 from Tower Bridge. Competitors will maintain starboard hand navigation at all times and will be supported by 4 safety boats. It is expected that all competitors will be clear of Westminster Bridge by 10:00. The race will finish at Putney Bridge and SUP's will vacate the river at Putney Hard by 12:00. On completion of the race floats will be recovered and removed from the Thames by 13:00.

Local Traffic Control will be in force throughout the area from 08:30 until 12:00 by attending Harbour Service Launches. All vessel navigating between Butler's Wharf Pier and the Black Buoy at Putney are to pay particular attention to this event and maintain a continuous watch on VHF Channel 14, following instructions from the attending Harbour Service Launch; call sign prefix 'THAMES PATROL'.

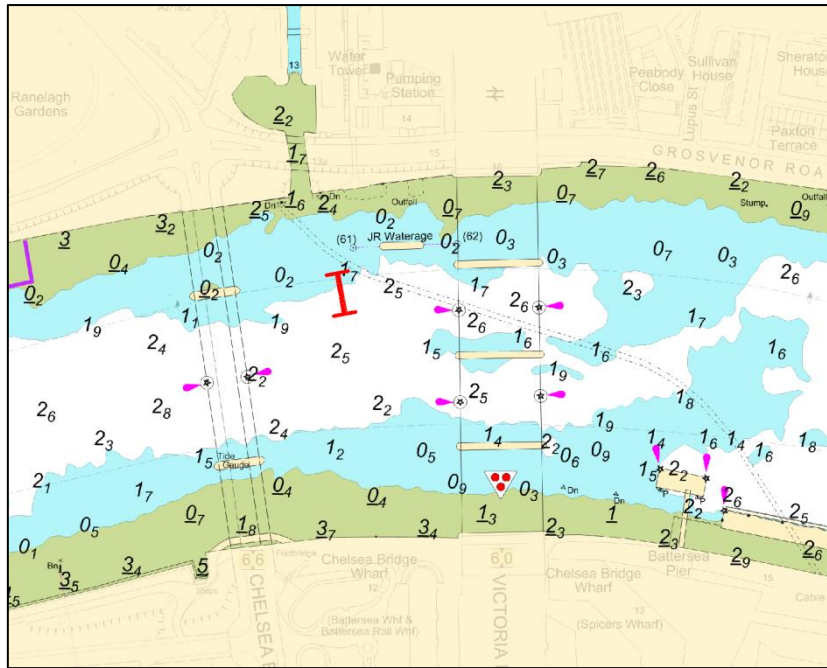
Further details will be broadcast by London VTS on VHF Channel 14.



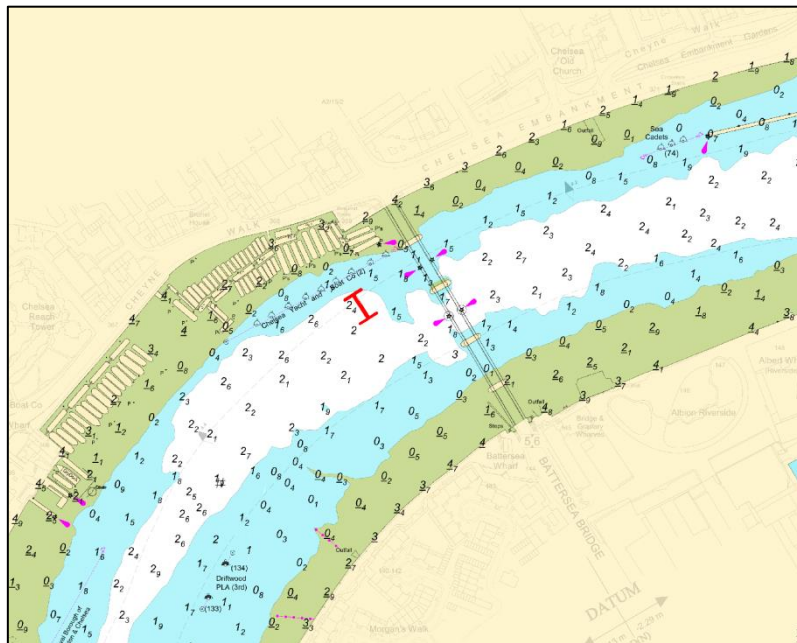
Tower Bridge



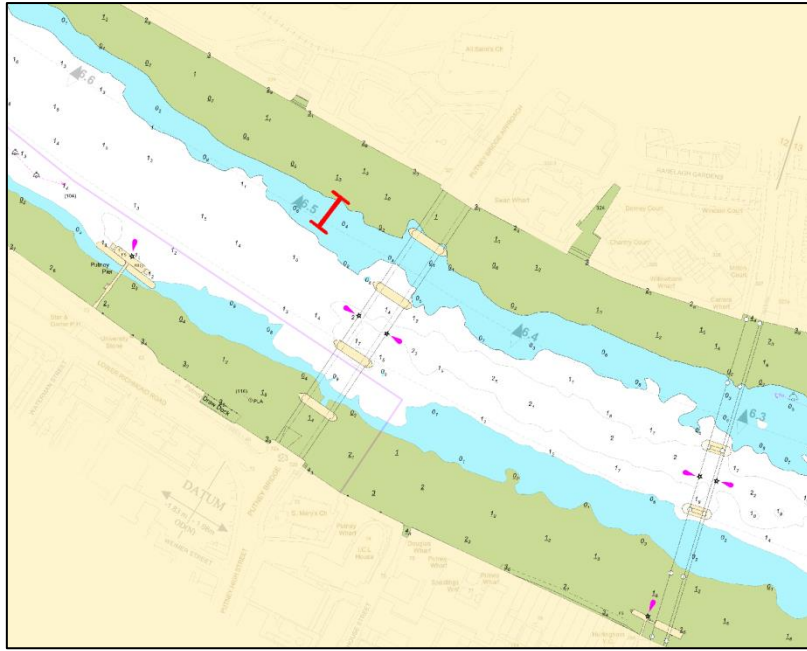
Westminster Bridge



Chelsea Bridge



Battersea Bridge



Putney Bridge

10 May 2019

Port of London Authority
London River House, Royal Pier Road,
Gravesend, Kent DA12 2BG

BOB BAKER
CHIEF HARBOUR MASTER



EXPIRY DATE: 19th May 2019
TO RECEIVE FUTURE NOTICES TO MARINERS BY **E-MAIL**,
PLEASE REGISTER VIA OUR WEBSITE www.pla.co.uk
**Telephone calls, VHF radio traffic, CCTV and radar traffic images may
be recorded in the VTS Centres at Gravesend and Woolwich**

