

NOTICE TO MARINERS M39 of 2022

LAMBETH REACH DIVING OPERATIONS

Mariners are advised that diving operations are expected to take place daily between 20th and 24th June 2022 on the Shell Centre intake and discharge sumps, located, respectively, beneath and immediately downriver of Waterloo Millennium Pier.

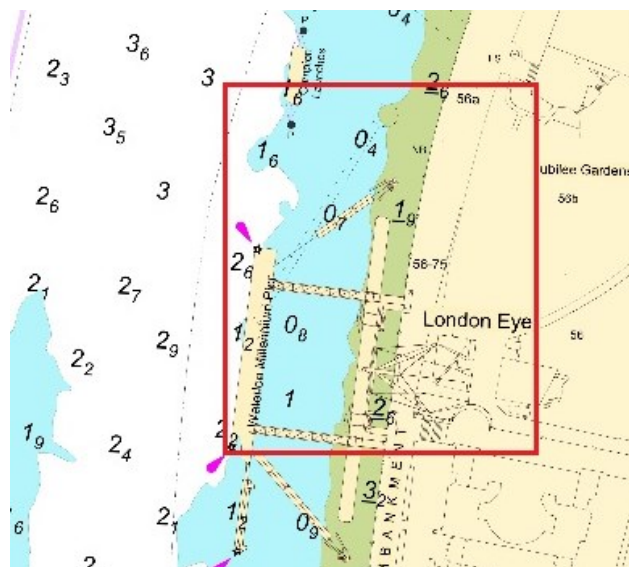
Diving operations will be conducted from vessel CHILI DOG, and will be timed around low water periods. CHILI DOG is expected to display appropriate signals for these operations.

Diving on the intake sump, located beneath the pier itself, is planned to take place only between 0130 and 0700 during the specified period.

Any vessel intending to make use of Waterloo Millennium Pier while diving operations on the intake sump, located beneath the pier itself, are in progress must keep well clear of vessel CHILI DOG.

Requests for vessels to proceed with caution or pass at slow speed will be made by London VTS on VHF ch.14, in accordance with the Port of London Authority's [Port Information Guide](#), under 'London VTS', section 4. Any further details will be broadcast by London VTS.

The chartlet below shows the location of the operations: -



17/06/2022

Port of London Authority
London River House, Royal Pier Road,
Gravesend, Kent DA12 2BG

DAVID ALLSOP
ASSISTANT HARBOUR
MASTER

EXPIRY DATE: 25/06/2022

TO RECEIVE FUTURE NOTICES TO MARINERS BY E-MAIL,
PLEASE REGISTER VIA OUR WEBSITE www.pla.co.uk

Telephone calls, VHF radio traffic, CCTV and radar traffic images may be recorded in the VTS Centres at Gravesend and Woolwich

All Current Notices to Mariners can be found here - <http://www.pla.co.uk/ntm>