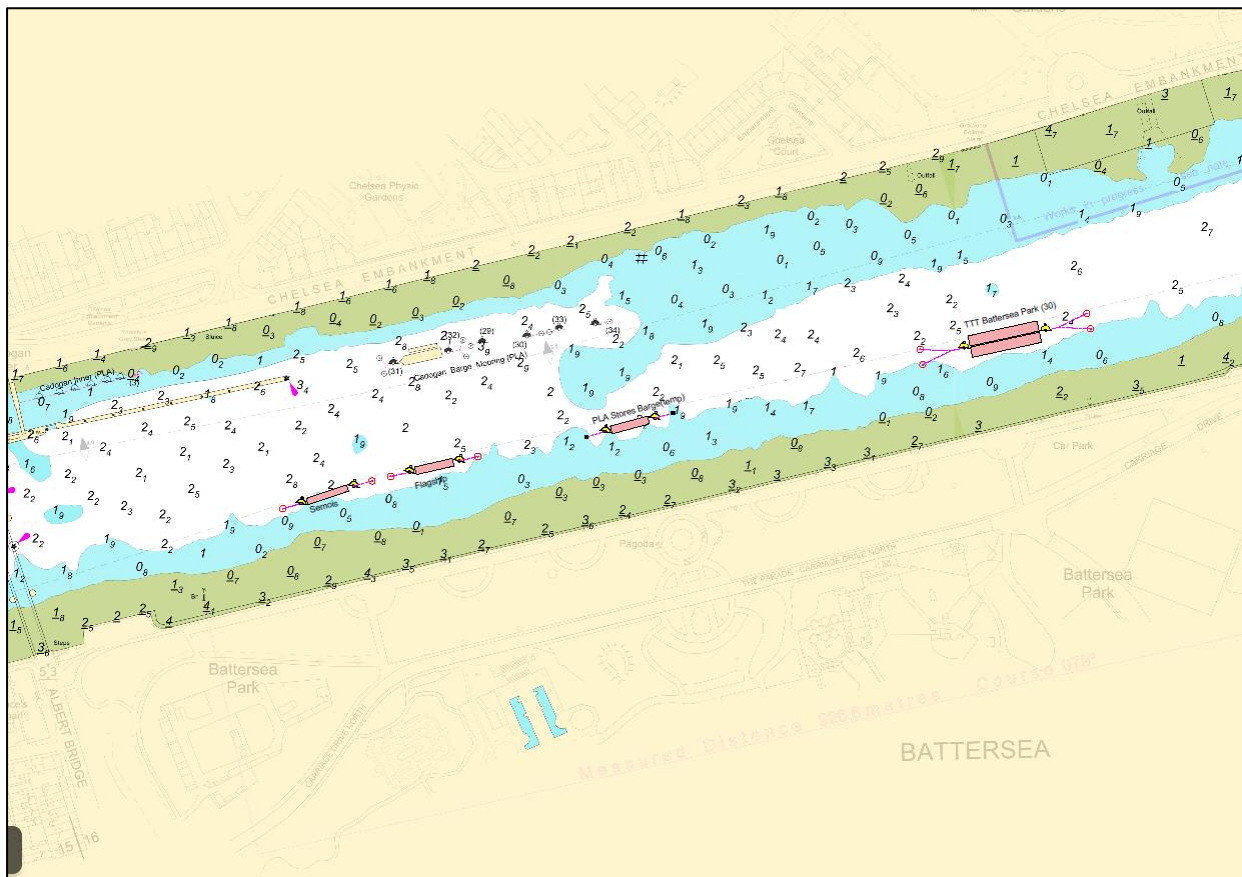


## **NOTICE TO MARINERS** M42 of 2019

### **CHELSEA REACH** **TEMPORARY BARGE MOORING**

Mariners are advised that on or about 24 July 2019 contractors working on behalf of the Tideway Tunnel Project will lay a temporary barge mooring off Battersea Park and reposition barges in Battersea Roads.

The PLA vessel LONDON TITAN will lay a TTT barge mooring in a position south of the channel as indicated in red on the chartlet below.



The PLA temporary stores barge mooring will be laid on the 24<sup>th</sup> of July, followed by the positioning of the SEMOIS and FLAGSHIP in the week commencing the 29 July. The Tideway Battersea Park mooring will be laid in the week commencing 12 August as tides permit. It is anticipated this tier will be in place for the duration of the Tideway Tunnel workings.

The installation works will be supported by DRIFTWOOD and other PLA craft. On completion of the works the PLA stores barge will be removed.

Vessels are requested to be mindful of the nature of the works, their wash when passing the works and to pass at a safe distance.

London VTS will broadcast requests for vessels to “proceed with caution” or “proceed at slow speed”, as described in Permanent Notices to Mariners 4 of 2014 as required by the works. International Code flags “Romeo Yankee” will be displayed when this is in effect.

Further details will be broadcast by London VTS on VHF Channel 14.

---

**16 July 2019**

Port of London Authority  
London River House, Royal Pier Road,  
Gravesend, Kent DA12 2BG

**BOB BAKER**  
**CHIEF HARBOUR MASTER**



EXPIRY DATE: 31<sup>st</sup> August 2019  
TO RECEIVE FUTURE NOTICES TO MARINERS BY **E-MAIL**,  
PLEASE REGISTER VIA OUR WEBSITE [www.pla.co.uk](http://www.pla.co.uk)  
Telephone calls, VHF radio traffic, CCTV and radar traffic images may  
be recorded in the VTS Centres at Gravesend and Woolwich  
All Current Notices to Mariners can be found here -  
<http://www.pla.co.uk/Safety/Regulations-and-Guidance/Notices-to-Mariners/Notices-to-Mariners>

