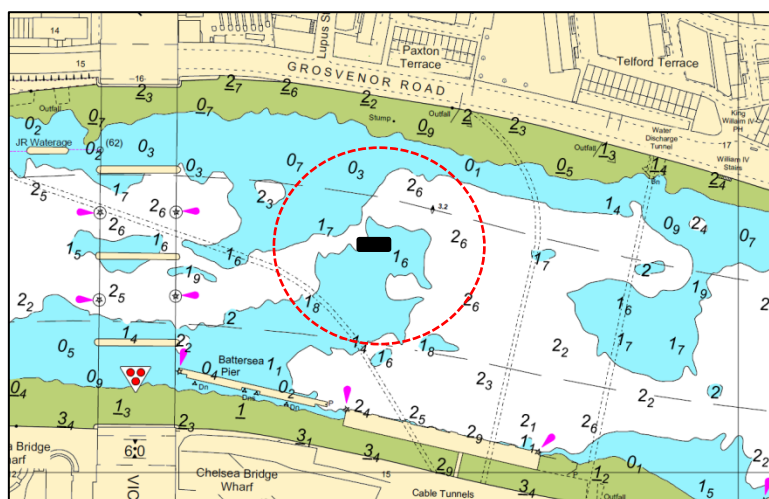


## NOTICE TO MARINERS      M43 of 2017

### NINE ELMS REACH FIREWORKS DISPLAYS LOCAL TRAFFIC CONTROL

On **Tuesday 13<sup>th</sup> June 2017** and **Tuesday 20<sup>th</sup> June 2017** there will be fireworks displays from barges positioned mid-stream 80 metres below Victoria Railway Bridge. The displays will commence at 22:40 and delays of up to 10 minutes may be expected.



----- Denotes exclusion zone

Local Traffic Control will be indicated by two Harbour Service Launches displaying flashing blue lights, one stationed upstream of Chelsea Bridge and one downstream of Victoria Railway Bridge.

All vessels on the river between Cringle Wharf and Chelsea Bridge are to navigate in this area with caution and are to maintain a continuous watch on VHF Channel 14, following instructions from the attending Harbour Service Launches exhibiting flashing blue lights; call sign prefix 'THAMES PATROL'.

Owners and operators are reminded that no manned vessels other than emergency service vessels responding to an incident and vessels engaged in fireworks operations are permitted within the controlled area.

Further details will be promulgated by **London VTS** on VHF Channel 14 during routine river broadcasts.

**18 May 2017**

Port of London Authority  
London River House, Royal Pier Road,  
Gravesend, Kent DA12 2BG

**BOB BAKER**  
CHIEF HARBOUR MASTER



EXPIRY DATE: 21<sup>st</sup> June 2017  
TO RECEIVE FUTURE NOTICES TO MARINERS BY **E-MAIL**,  
PLEASE REGISTER VIA OUR WEBSITE [www.pla.co.uk](http://www.pla.co.uk)  
**Telephone calls, VHF radio traffic, CCTV and radar traffic images may  
be recorded in the VTS Centres at Gravesend and Woolwich**

