

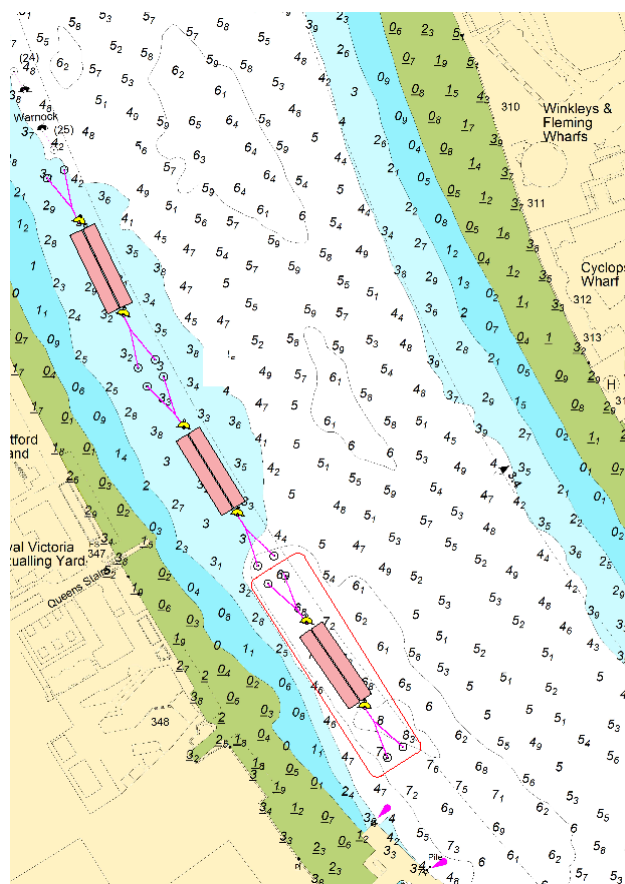
NOTICE TO MARINERS M43 of 2019

LIMEHOUSE REACH

TEMPORARY BARGE MOORING

Mariners are advised that on or about 5 August 2019 contractors working on behalf of the Tideway Tunnel Project will lay an additional temporary barge mooring off Deptford Wharf.

The PLA vessel LONDON TITAN will lay a barge mooring in a position south of the channel as indicated in red on the chartlet below.



The barge mooring will be laid as a tier marked by unlit Admiralty class buoys at each end and identified as Deptford Strand Barge Lower Mooring. It is anticipated this tier will be in place for the duration of the Tideway Tunnel workings.

The installation works will be supported by DRIFTWOOD and other PLA craft.

Vessels are requested to be mindful of the nature of the works, their wash when passing the works and to pass at a safe distance.

London VTS will broadcast requests for vessels to “proceed with caution” or “proceed at slow speed”, as described in Permanent Notices to Mariners 4 of 2014 as required by the works. International Code flags “Romeo Yankee” will be displayed when this is in effect.

Further details will be broadcast by London VTS on VHF Channel 14.

16 July 2019

Port of London Authority
London River House, Royal Pier Road,
Gravesend, Kent DA12 2BG

BOB BAKER
CHIEF HARBOUR MASTER



EXPIRY DATE: 31st August 2019
TO RECEIVE FUTURE NOTICES TO MARINERS BY **E-MAIL**,
PLEASE REGISTER VIA OUR WEBSITE www.pla.co.uk
Telephone calls, VHF radio traffic, CCTV and radar traffic images may
be recorded in the VTS Centres at Gravesend and Woolwich
All Current Notices to Mariners can be found here -
<http://www.pla.co.uk/Safety/Regulations-and-Guidance/Notices-to-Mariners/Notices-to-Mariners>

