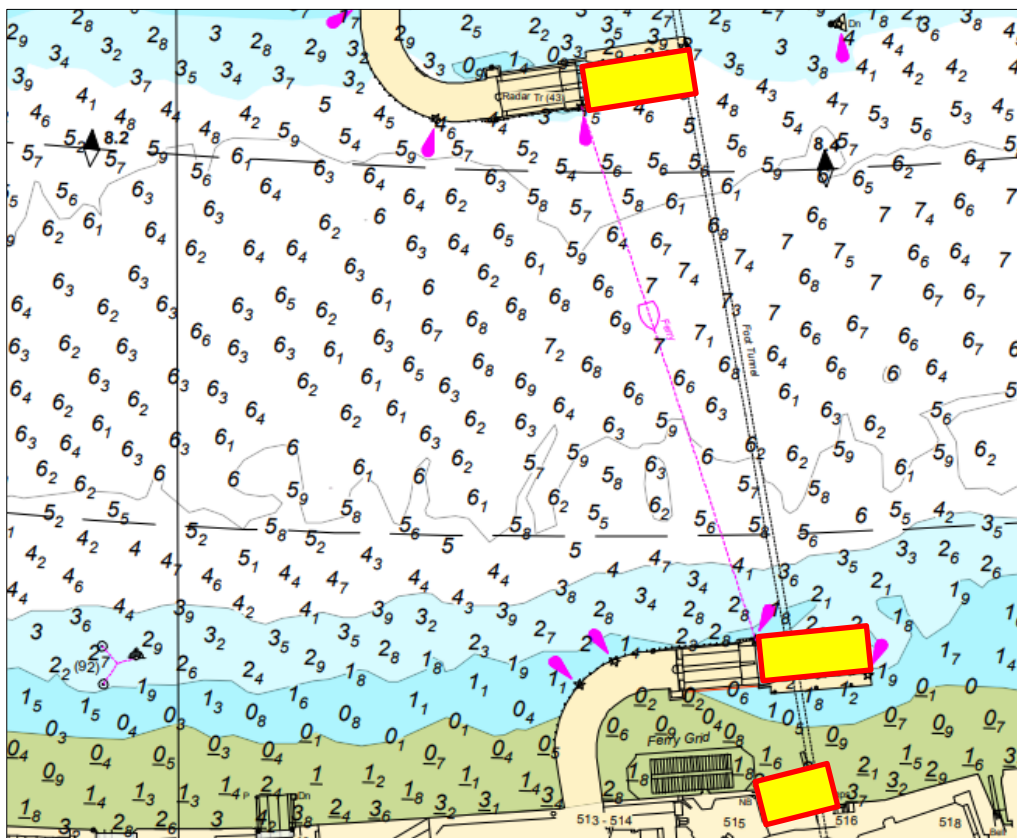


## NOTICE TO MARINERS      M49 of 2021

### WOOLWICH REACH WOOLWICH FERRY TERMINALS HEAVY LIFTING OPERATIONS

On or about Friday 10<sup>th</sup> December 2021, contractors working on behalf of Transport for London will conduct heavy lifting operations at the Woolwich Ferry North and South Terminals, and alongside the ferry maintenance yard on the South shore.

The multi-cat vessel SOPHIA D will be undertaking the works from approximately 0700 onwards for the duration of the day. During this time, the SOPHIA D will conduct lifting operations at each of the locations highlighted in the chartlet below:



During lifting operations, requests to proceed with caution or at slow speed will be made in accordance with the procedure set out in the Port of London Authority's [Port Information Guide](#), under 'London VTS', 'Paragraph 4'.

**07 December 2021**

Port of London Authority  
London River House, Royal Pier Road,  
Gravesend, Kent DA12 2BG

**Miles Featherstone**  
Deputy Harbour Master

EXPIRY DATE: 13 December 2021

TO RECEIVE FUTURE NOTICES TO MARINERS BY **E-MAIL**,

PLEASE REGISTER VIA OUR WEBSITE [www.pla.co.uk](http://www.pla.co.uk)

Telephone calls, VHF radio traffic, CCTV and radar traffic images may be recorded in the VTS Centres at Gravesend and Woolwich

All Current Notices to Mariners can be found here - <http://www.pla.co.uk/ntm>