

NOTICE TO MARINERS M54 of 2020

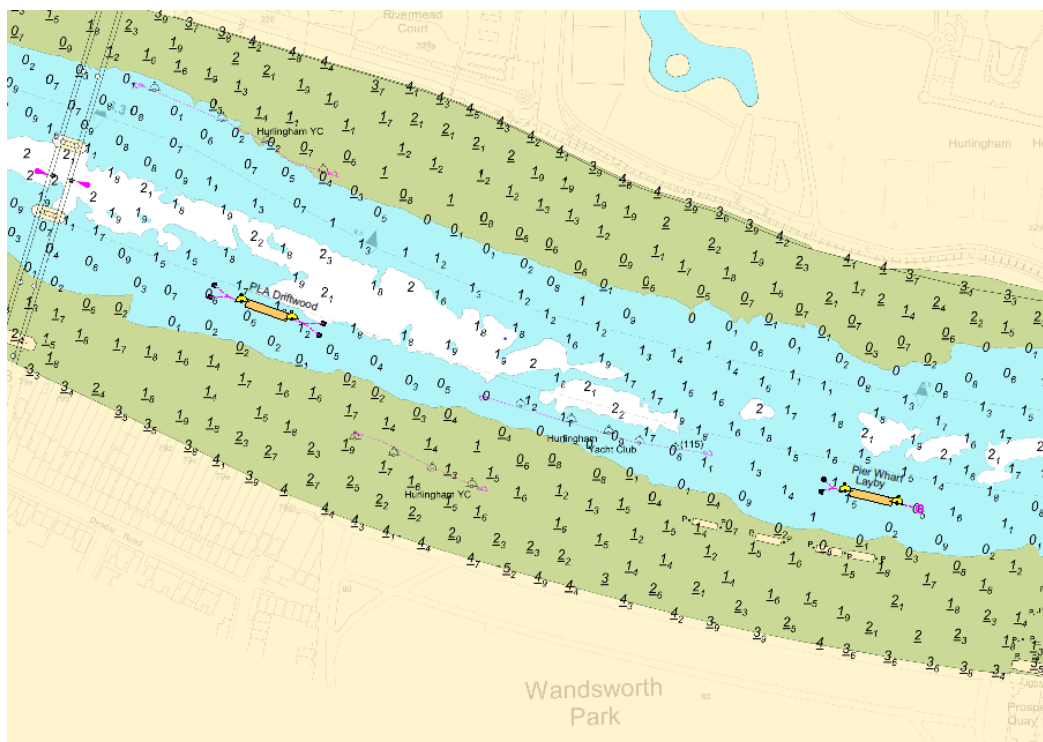
WANDSWORTH REACH

WANDSWORTH BRIDGE ARCH CLOSURES, RELOCATION AND INSTALLATION OF MOORINGS

On or about 16th November 2020, contractors working on Wandsworth Bridge refurbishment will erect scaffolding and no 1 and 3 arches of Wandsworth Bridge will be closed. The works are expected to take about 9 months.

To facilitate the continued use of Pier Wharf while the scaffolding is in no 3 arch. On or about the 11th November 2020, the PLA Driftwood mooring will be located closer to Fulham Rail Bridge and a temporary layby mooring, (only for the use of barges being changed out at Pier Wharf,) will be installed.

Please see the chartlet below depicting both the relocated and installed moorings.



Arches closed to navigation will be marked in accordance with the Port of London Authority Thames Byelaws 2012 namely:

- By day, three red discs 0.6 metres in diameter at the points of an equilateral triangle with the apex downwards and the base horizontal
- By night, three red lights in similar positions to the discs displayed by day.

Further details will be broadcast by London VTS on VHF Channel 14.

**4 November
2020**

Port of London Authority
London River House, Royal Pier Road,
Gravesend, Kent DA12 2BG

**Terry Lawrence
Harbour Master
Thames Tideway Tunnel**



EXPIRY DATE: 30th September 2021
TO RECEIVE FUTURE NOTICES TO MARINERS BY **E-MAIL**,
PLEASE REGISTER VIA OUR WEBSITE www.pla.co.uk
**Telephone calls, VHF radio traffic, CCTV and radar traffic images may
be recorded in the VTS Centres at Gravesend and Woolwich**
All Current Notices to Mariners can be found here -
<http://www.pla.co.uk/Safety/Regulations-and-Guidance/Notices-to-Mariners/Notices-to-Mariners>

