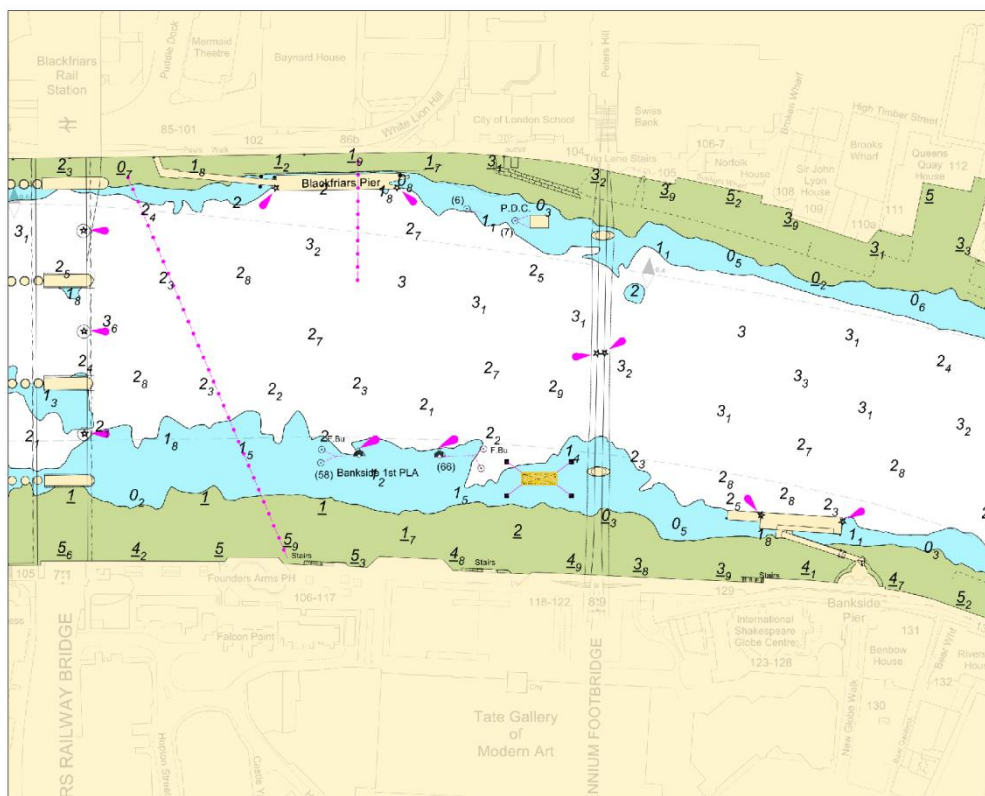


## **NOTICE TO MARINERS** M60 of 2019

### **KING'S REACH TEMPORARY MOORINGS ART INSTALLATION**

On or about 2<sup>nd</sup> September 2019 PLA Marine Services will be laying a temporary mooring on the south shore between Bankside layby and Millennium footbridge. The temporary mooring will consist of 4 sinkers marked by a lit Special Mark. The light characteristics are as follows, Quick Flash Yellow (Qk.FI.Y).

On or about 3<sup>rd</sup> September 2019, the special mark will be replaced by the “Ship of Tolerance”, a wooden boat sculpture with a single sail, in support of the Thames Festival. The sculpture’s sail is to be lit between 19:30 and 22:30, and serviced from Bankside Pier. It is expected that the installation is to be in place for four weeks.



The laying of the mooring will be undertaken by the PLA vessel “DRIFTWOOD” which will monitor VHF channel 14 at all times and display the lights and shapes as prescribed in Rule 27 of the International Regulations for Preventing Collisions at Sea 1972 namely:

- By day, three black shapes in a vertical line the highest and lowest of which are balls and the middle one a diamond.

All vessels navigating between Bankside Pier and Blackfriars Bridges are requested to navigate with caution and keep a continuous watch on VHF 14.

Further details will be broadcast by **London VTS on VHF Channel 14.**

---

**28 August 2019**

Port of London Authority  
London River House, Royal Pier Road,  
Gravesend, Kent DA12 2BG

**BOB BAKER**  
**CHIEF HARBOUR MASTER**



EXPIRY DATE: 11<sup>th</sup> October 2019  
TO RECEIVE FUTURE NOTICES TO MARINERS BY **E-MAIL**,  
PLEASE REGISTER VIA OUR WEBSITE [www.pla.co.uk](http://www.pla.co.uk)  
Telephone calls, VHF radio traffic, CCTV and radar traffic images may  
be recorded in the VTS Centres at Gravesend and Woolwich  
All Current Notices to Mariners can be found here -  
<http://www.pla.co.uk/Safety/Regulations-and-Guidance/Notices-to-Mariners/Notices-to-Mariners>

