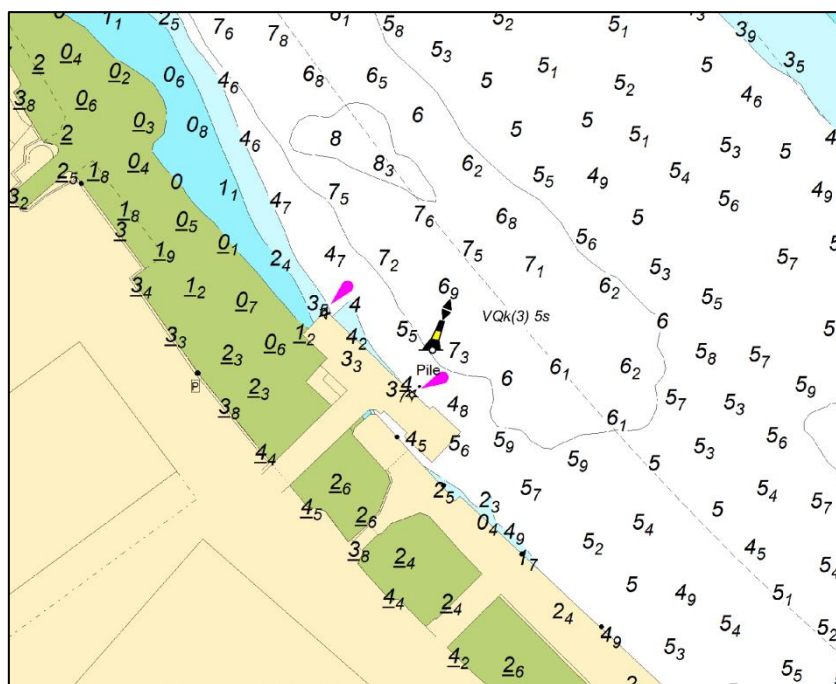


## NOTICE TO MARINERS      M64 of 2017

### LIMEHOUSE REACH CONVOYS WHARF SUNKEN PONTOON

Mariners are advised that on the 20<sup>th</sup> July 2017, a PLA Driftwood vessel will position an East Cardinal Mark off the sunken pontoon at Convoys Wharf. The East Cardinal Mark will display a white light with characteristics VQk Fl(3) every 5 seconds.

Please see the chartlet below depicting the location of the East Cardinal Buoy.



In addition to the East Cardinal Mark, London VTS will broadcast requests for vessels to “proceed with caution” or “proceed at slow speed”, as described in Permanent Notices to Mariners 4 of 2014 as required. International Code flags “Romeo Yankee” will be displayed only when this is in effect.

Further details will be broadcast by London VTS on VHF Channel 14.

19 July 2017

Port of London Authority  
London River House, Royal Pier Road,  
Gravesend, Kent DA12 2BG

**BOB BAKER**  
CHIEF HARBOUR MASTER



EXPIRY DATE: 1<sup>st</sup> September 2017  
TO RECEIVE FUTURE NOTICES TO MARINERS BY **E-MAIL**,  
PLEASE REGISTER VIA OUR WEBSITE [www.pla.co.uk](http://www.pla.co.uk)  
**Telephone calls, VHF radio traffic, CCTV and radar traffic images may  
be recorded in the VTS Centres at Gravesend and Woolwich**

