

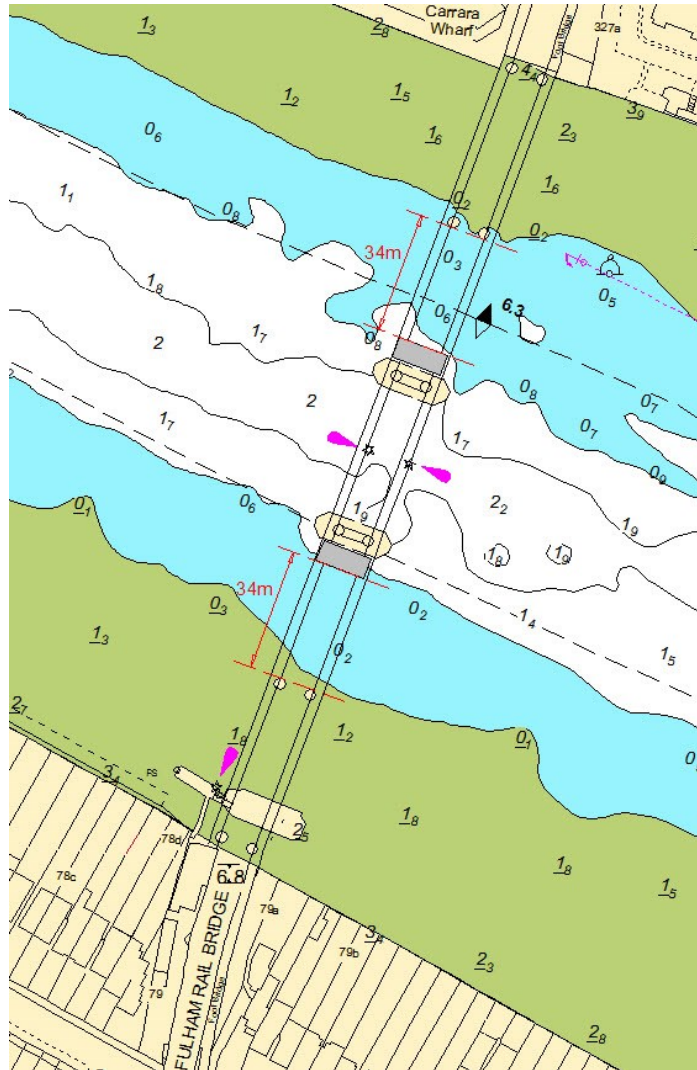
## **NOTICE TO MARINERS M67 of 2019**

### **WANDSWORTH REACH FULHAM RAIL BRIDGE ARCH WIDTH RESTRICTIONS**

The Port of London Authority are working on behalf of Tideway Tunnel to conducting survey operations at Fulham Rail Bridge between Tuesday 8th October and Friday 11th October 2019. Works are expected to be completed within two days, however two contingency dates have been scheduled for this project.

In order to accommodate these works, a DRIFTWOOD will be moored alongside the centre arch piers reducing the width of the shore arches to 34m, as detailed in the chart extract below. Operations will commence in the following arches as follows:

Arch	Works Start		Works End		Navigational Information
	Date	Time	Date	Time	
4	Tuesday 8 <sup>th</sup> October 2019	07:00	Tuesday 8 <sup>th</sup> October 2019	17:00	Width Restriction
2	Wednesday 9 <sup>th</sup> October 2019	07:00	Wednesday 9 <sup>th</sup> October 2019	17:00	Width Restriction
4	Thursday 10 <sup>th</sup> October 2019	07:00	Thursday 10 <sup>th</sup> October 2019	17:00	Contingency Date Width Restriction
2	Friday 11 <sup>th</sup> October 2019	07:00	Friday 11 <sup>th</sup> October 2019	17:00	Contingency Date Width Restriction



London VTS will broadcast requests for vessels to “proceed with caution” or “proceed at slow speed”, as described in Permanent Notices to Mariners 4 of 2014 as required by the works. International Code Flags “Romeo Yankee” will be displayed when this is in effect.

Further details will be broadcast by **London VTS** on **VHF Channel 14**.

**24 September  
2019**

Port of London Authority  
London River House, Royal Pier Road,  
Gravesend, Kent DA12 2BG

**BOB BAKER  
CHIEF HARBOUR MASTER**



EXPIRY DATE: 15<sup>th</sup> October 2019  
TO RECEIVE FUTURE NOTICES TO MARINERS BY **E-MAIL**,  
PLEASE REGISTER VIA OUR WEBSITE [www.pla.co.uk](http://www.pla.co.uk)  
Telephone calls, VHF radio traffic, CCTV and radar traffic images may  
be recorded in the VTS Centres at Gravesend and Woolwich  
All Current Notices to Mariners can be found here -  
<http://www.pla.co.uk/Safety/Regulations-and-Guidance/Notices-to-Mariners/Notices-to-Mariners>

