

NOTICE TO MARINERS

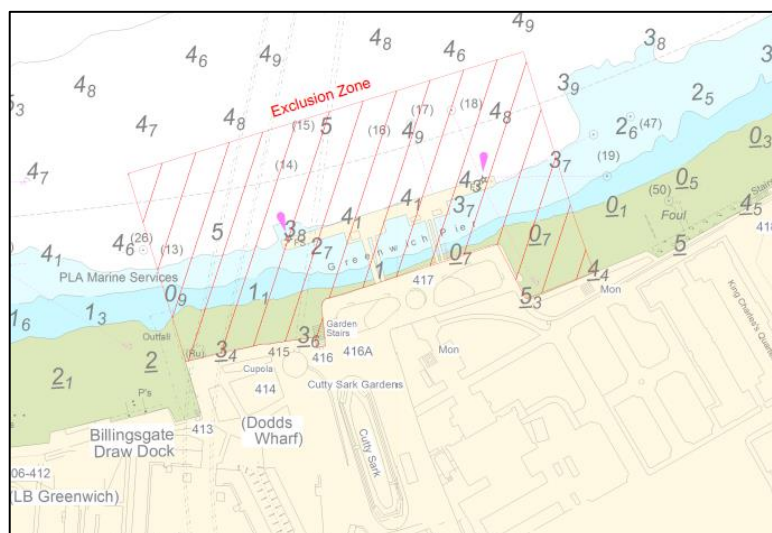
M8 of 2018

GREENWICH REACH GREENWICH PIER TEMPORARY PIER CLOSURE AND MAINTENANCE WORKS

Contractors working on behalf of London River Services are conducting maintenance works to Greenwich Pier. These works include the reinstatement of the upper end of the pier, replacement of brows, maintenance of the mooring chains and the removal of the lower end of the pier.

Reinstatement of Upper pontoons

On **Monday 19th February 2018** at **10:00** Greenwich Pier will be closed to navigation to allow for the removal of the temporary moorings and the reinstatement of the upper pier pontoons. This work will be undertaken by LONDON TITAN accompanied by the DRIFTWOOD II & DRIFTWOOD III. All vessels involved in the works will maintain a continuous listening watch on VHF channel 14. During these works, a temporary exclusion zone will be established extending 75m from Greenwich Pier, as detailed in chartlet 1. On **Wednesday 21st February 2018** at **06:00** the lower end of Greenwich Pier will re-open to navigation and the upper end will remain closed to navigation.



Chartlet 1

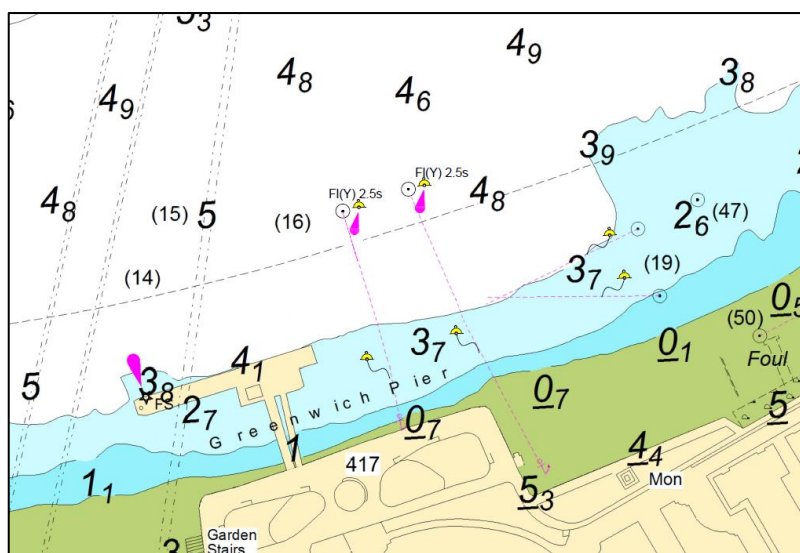
Replacement of Brows

On **Thursday 22nd February 2018** at **15:00** the upper brows will be reinstated at Greenwich Pier. The crane barge TILMAN will be located on the upper end of Greenwich Pier to begin lifting operations.

Removal of Lower pontoons

On **Tuesday 27th February 2018** at **09:00** Greenwich Pier will be closed to navigation to allow for the removal of the lower pontoons and the installation of temporary moorings to support the upper end of the pier. This work will be undertaken by LONDON TITAN accompanied by the DRIFTWOOD II & DRIFTWOOD III. All vessels involved in the works will maintain a continuous listening watch on VHF channel 14. The upriver end of Greenwich Pier will re-open on **Thursday 1st March 2018** at **06:00**. During these works, a temporary exclusion zone will be established extending 75m from Greenwich Pier, as detailed in chartlet 1.

On completion of the temporary moorings and re-opening of the pier, two buoys will be positioned approximately 50m off the upper end of the pier to mark the location of the mooring chains. These buoys will be fitted with navigation lights with characteristics of FI Y 2.5s and only vessels navigating to / from Greenwich Pier should navigate inside these buoys. Additional unlit buoys will be located at the lower end of Greenwich Pier in line with the pier face, as detailed in chartlet 2.



Chartlet 2

While Greenwich Pier is supported by temporary moorings only the minimum propulsion necessary to safely board and discharge passengers should be utilised. This is expected to be for a period of approximately 10 weeks.

Vessels navigating in the vicinity of Greenwich Pier are to do so with particular caution with due regard of the works taking place. London VTS will broadcast requests for vessels to “proceed with caution” or “proceed at slow speed”, as described in the Permanent Notices to Mariners 4 of 2014, as required by the works. International Code flags “Romeo Yankee” will be displayed when this is in effect.

Further details will be broadcast by London VTS on VHF Channel 14.

6 February 2018

Port of London Authority
London River House, Royal Pier Road,
Gravesend, Kent DA12 2BG

BOB BAKER
CHIEF HARBOUR MASTER



EXPIRY DATE: 31st March 2018
TO RECEIVE FUTURE NOTICES TO MARINERS BY **E-MAIL**,
PLEASE REGISTER VIA OUR WEBSITE www.pla.co.uk
**Telephone calls, VHF radio traffic, CCTV and radar traffic images may
be recorded in the VTS Centres at Gravesend and Woolwich**

