

NOTICE TO MARINERS M96 of 2017

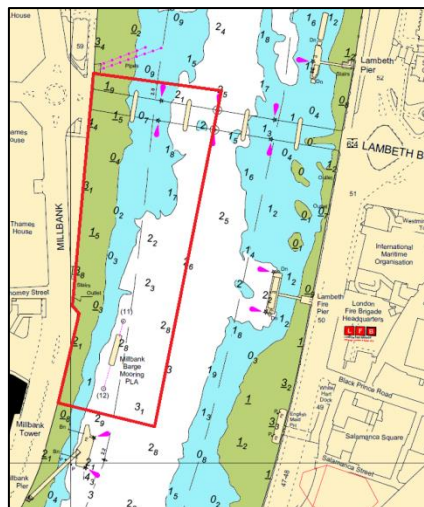
LAMBETH REACH EMERGENCY SERVICES EXERCISE LOCAL TRAFFIC CONTROL

This notice replaces M95 of 2017 which is hereby cancelled

The emergency services will be conducting two exercises between Lambeth Bridge and Millbank Pier. In order to accommodate this exercise, an exclusion zone will be established and Local Traffic Control will be conducted at the following times:-

Date	Start Time	End Time	Navigational Information
Monday 23 rd October 2017	10:55	12:30	Local Traffic Control
Wednesday 8 th November 2017	09:25	09:50	Local Traffic Control

Local Traffic Control will be indicated by the Harbour Service Launch displaying flashing blue lights, stationed in the vicinity of Millbank Pier.



— Denotes exclusion zone

All vessels on the river in this area are to navigate with caution and are to maintain a continuous watch on VHF Channel 14, following instructions from the attending Harbour Service Launch exhibiting flashing blue lights; call sign prefix 'THAMES PATROL'.

Owners and operators are reminded that no manned vessels other than emergency services are permitted within the controlled area.

Further details will be promulgated by **London VTS** on VHF Channel 14 during routine river broadcasts.

6 October 2017

Port of London Authority
London River House, Royal Pier Road,
Gravesend, Kent DA12 2BG

BOB BAKER
CHIEF HARBOUR MASTER



EXPIRY DATE: 10th November 2017
TO RECEIVE FUTURE NOTICES TO MARINERS BY **E-MAIL**,
PLEASE REGISTER VIA OUR WEBSITE www.pla.co.uk
**Telephone calls, VHF radio traffic, CCTV and radar traffic images may
be recorded in the VTS Centres at Gravesend and Woolwich**

