

LAMBETH REACH

VICTORIA EMBANKMENT NAVIGATION LIGHTS

Table of Amendments	
30/01/2024	Expiry date extended to 29/02/2024

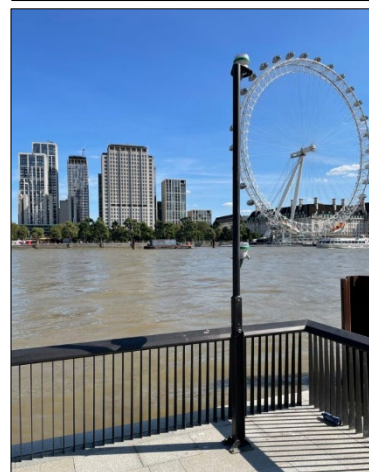
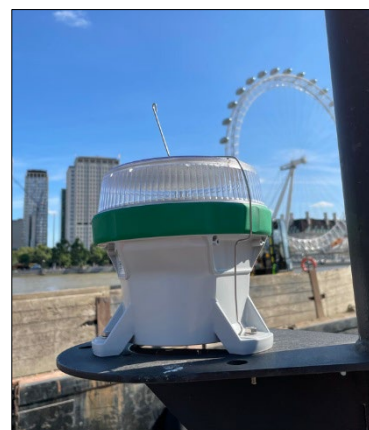
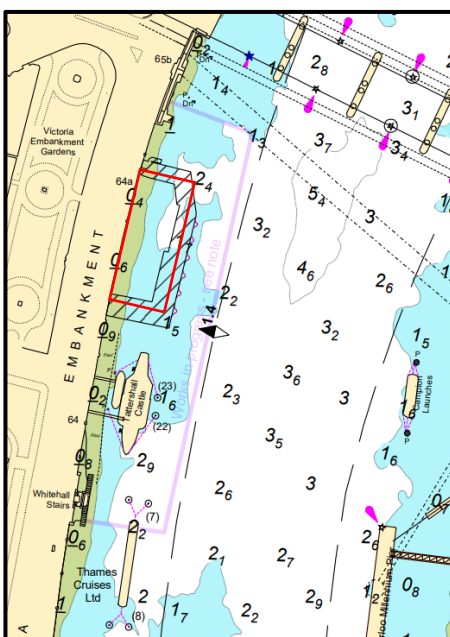
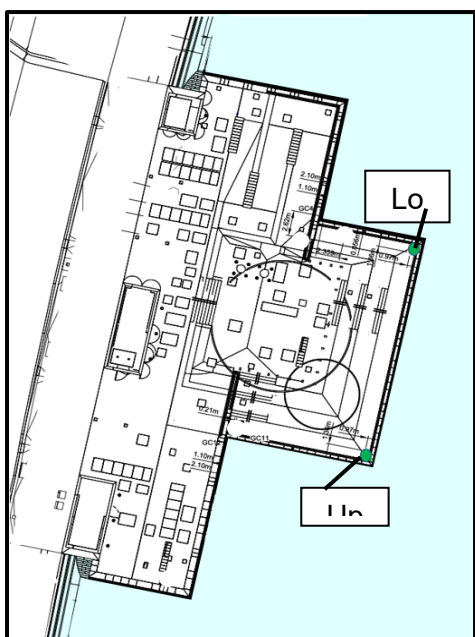
Mariners are advised that two new navigation lights have been established on the Tideway permanent works at Victoria Embankment.

The positions and characteristics are as listed below:

Victoria Embankment Upper - 51° 30' 20.12" 000° 07' 19.98" Lighted Beacon 2 FG Vert

Victoria Embankment Lower - 51° 30' 19.48" 000° 07' 20.27" Lighted Beacon 2 FG Vert

These lights will be added to PLA charts, at which time this Notice will be removed.



25/10/2023

Port of London Authority
London River House, Royal Pier Road,
Gravesend, Kent DA12 2BG

LYN KINDLEN-FUNNEL
Harbour Master

EXPIRY DATE: 29/02/2024

TO RECEIVE FUTURE NOTICES TO MARINERS BY E-MAIL,
PLEASE REGISTER VIA OUR WEBSITE pla.co.uk/Subscription-to-Newsletter

Telephone calls, VHF radio traffic, CCTV and radar traffic images may be recorded in the
VTS Centres at Gravesend and Woolwich



View all Active Notice to Mariners using the above QR Code