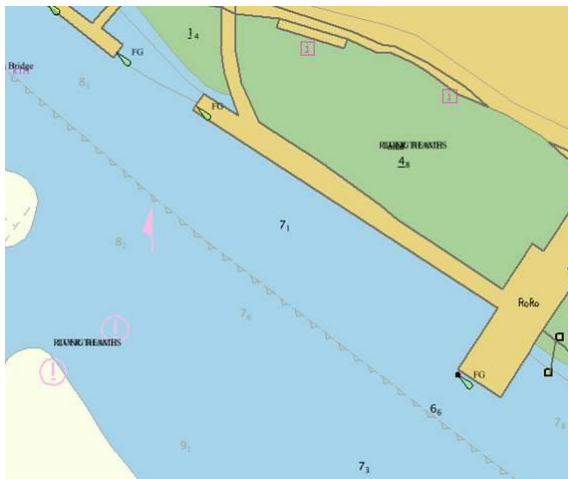


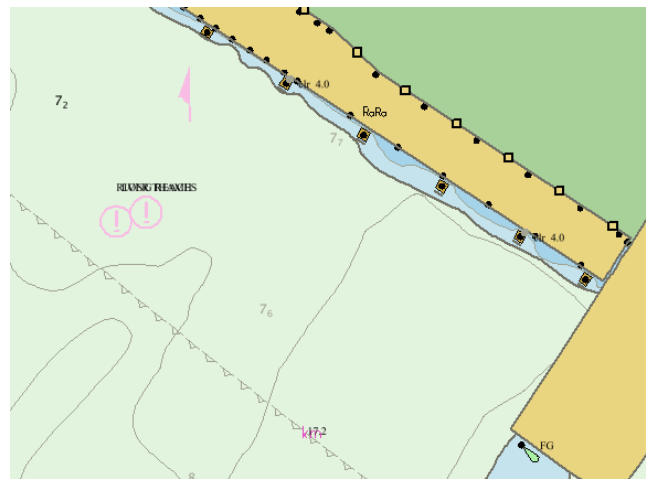
## **NOTICE TO AGENTS, BERTH AND SHIP OPERATORS No.3 of 2018**

### **THAMES ELECTRONIC CHARTING**

Please be advised that large scale berthing charts for the Thames are now available through chart agents as official ENC data for use on ECDIS.



*UKHO Scale Band 5 Chart*



*PLA Scale Band 6 Chart*

Coverage is currently available from Canvey to Crayfordness in three cells (GB6PL010, 020 & 030), but will be extended up to Margaretness later in 2018.

In addition to increased detail on structures including fender lines, bollards etc., these charts have 1m contour intervals, making the Safety Contour feature in ECDIS of more practical use for navigation.

**09 May 2018**

Port of London Authority  
London River House, Royal Pier Road,  
Gravesend, Kent DA12 2BG

**BOB BAKER**  
CHIEF HARBOUR MASTER



Owners, Agents and Charterers should ensure that the contents of this Notice are made known to the masters or persons in charge of their vessels or craft.  
TO RECEIVE FUTURE NOTICES TO MARINERS BY **E-MAIL**, PLEASE REGISTER VIA OUR WEBSITE [www.pla.co.uk](http://www.pla.co.uk)  
**Telephone calls, VHF radio traffic, CCTV and radar traffic images may be recorded in the VTS Centres at Gravesend and Woolwich**

