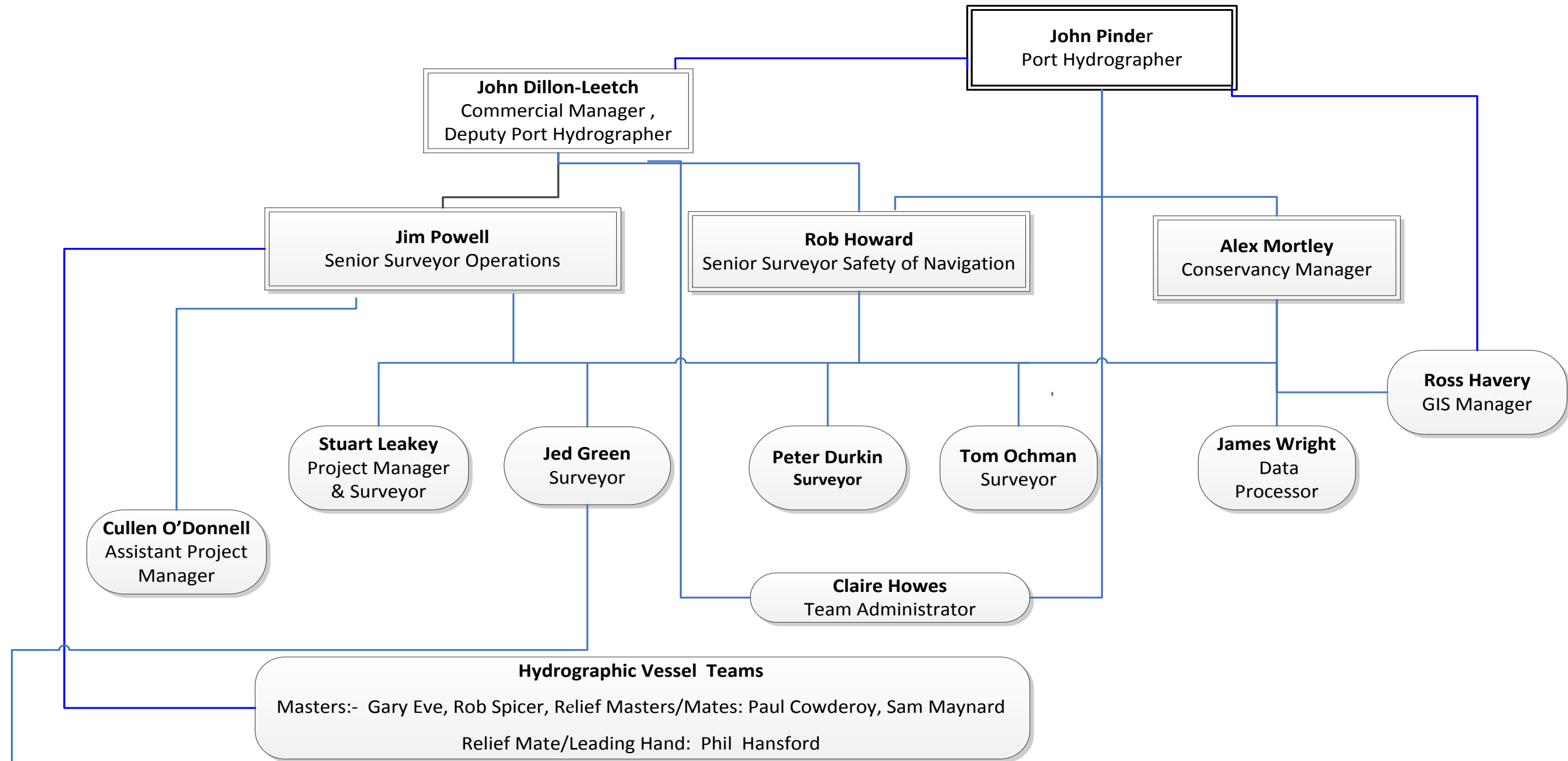


PLA HYDROGRAPHIC SERVICE – DEPARTMENTAL STRUCTURE 2017



Notes on Organisational Chart:

1. Three main survey 'silos' are COMMERCIAL, NAVIGATIONAL SAFETY and CONSERVANCY which will be resourced as appropriate
2. For Commercial projects teams will be resourced by in-house resource or specialist providers and sub-contractors dependant on availability.
3. Similarly, boats and crews to be assigned tasks to best meet the overall objectives.