



Tidal Thames Environment and Heritage Conference

The River Users' perspective: Using the river to bring about improvements to the environment

31 January 2019

London Gateway – Compensation Sites, Planet Mark and
Air Quality

Tom Coulter – Interim Environment Manager

London Gateway Overview

- Europe's Largest Port and Logistics Development
- Deep-sea container terminal
- Operations began 2014 with 3 out of 7 Berths created
- In 2018:
 - 22 Weekly Scheduled calls
 - Calling at 61 different countries
 - >1.3 Million TEU
- 9.25 million sq ft Logistics Park
- 4 warehouses operational and <30% developed



London Gateway Overview

Dredging and reclamation



Compensation Sites – Stanford Wharf Nature Reserve



Compensation Sites – Salt Fleet Flats



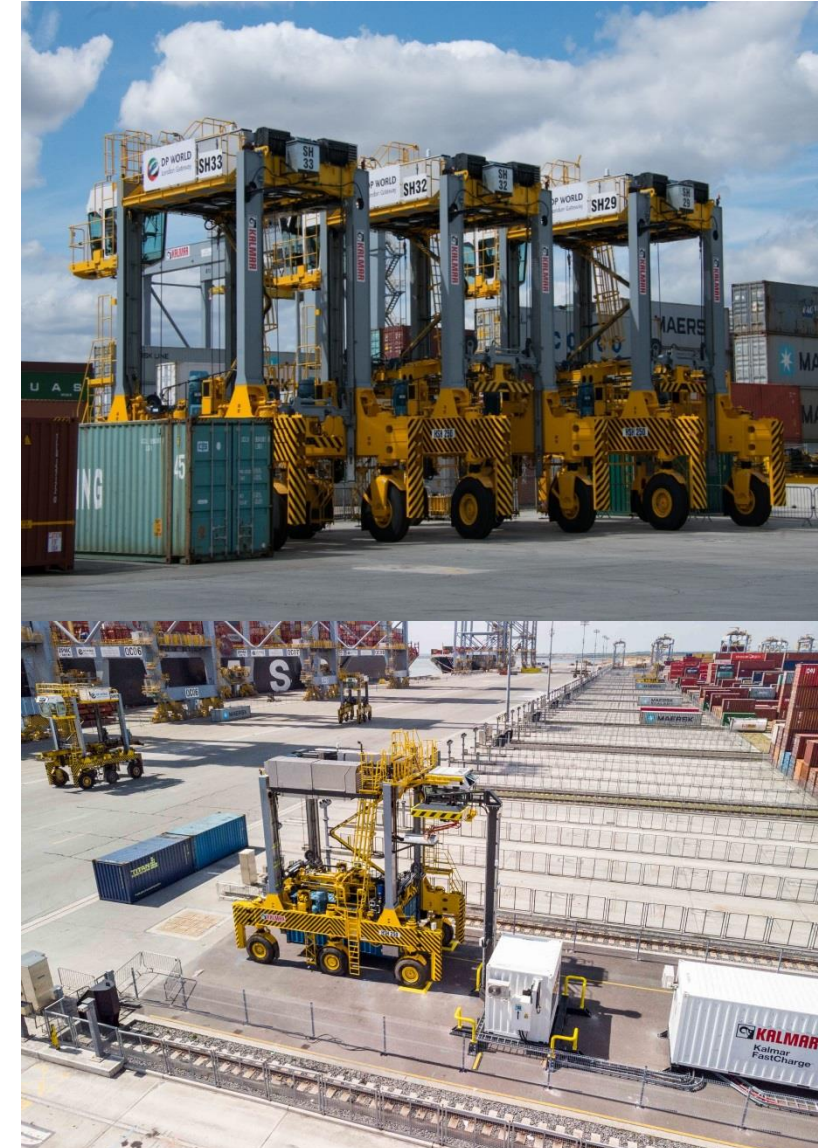
Compensation Sites

- Intertidal habitat lost 25ha
- Habitat created >83ha
- Wintering Birds Usage Average
 - Pre-Port: Average Assemblage: 7,863
 - Post Salt Fleet Flats: 10,387
- Salt Fleet Flats contributed to Thames Estuary 2100 floodplain creation target.



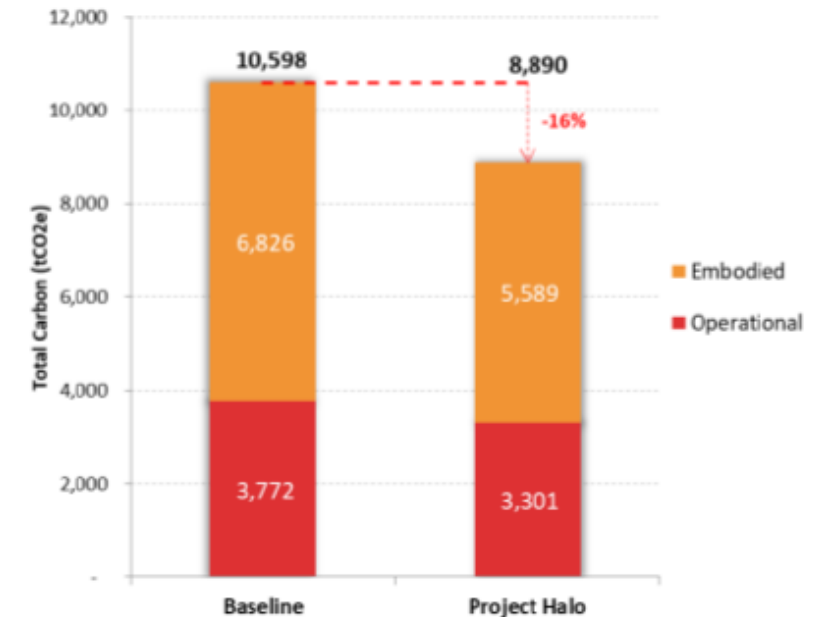
Planet Mark - Port

- DP World London Gateway Port became the first Port to become Planet Mark Certified.
- Calculation of CO₂e Usage per TEU and a commitment of 2.5% Annual Reduction.
- Number of initiatives including purchasing hybrid shuttle carriers and trialling worlds first fully electric shuttle carrier.
- Achieved 10% reduction per TEU in 2017.
- In 2018 predicted CO₂e reduction per TEU of >15%.



Planet Mark – Park

- Committed for all new buildings on the park to be certified to Planet Mark.
- SH Pratts HALO building received Planet Mark Certification, as life cycle analysis showed that sustainability initiatives implemented during construction and design will lower lifecycle carbon emissions by 16% or ~1,237 tCO₂e.
- Eden Project undertook sustainability workshop day at Laindon Park Primary School for 120 students.



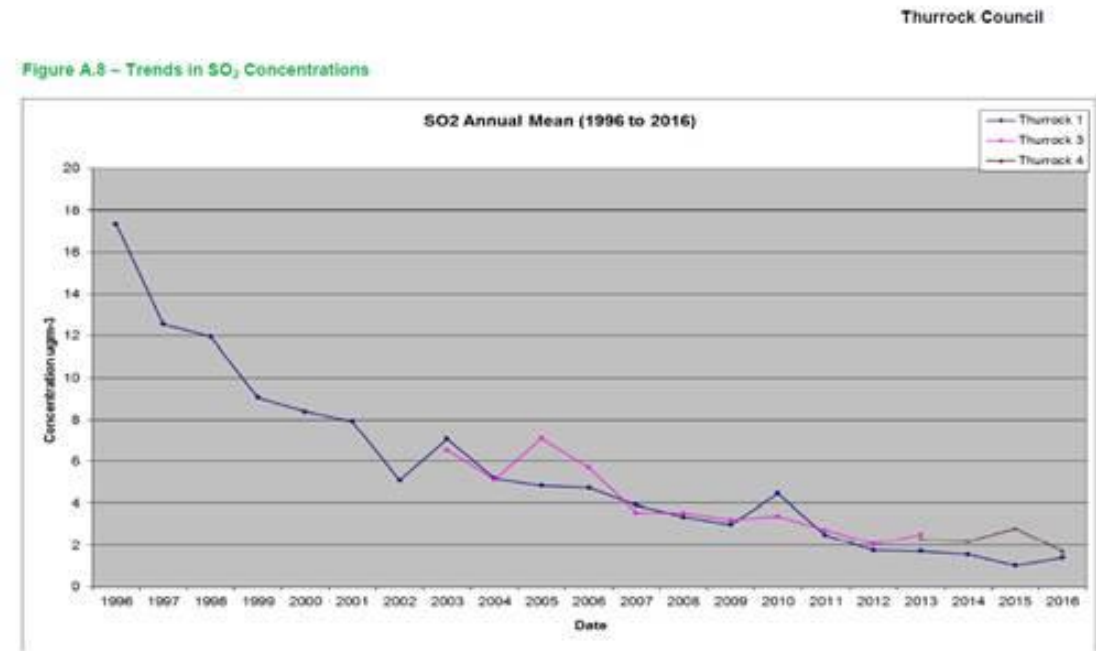
Air Quality Monitoring

- Identified that growing legislation and understanding of Air Quality.
- Ricardo created Air Quality Monitoring Strategy.
- Monitoring began in August 2018 for NO_x to gather baseline data.
- 9 locations, 5 port, 3 park and one co-located at Stanford Le-Hope AURN.
- Same technique as PLA Air Quality Monitoring.

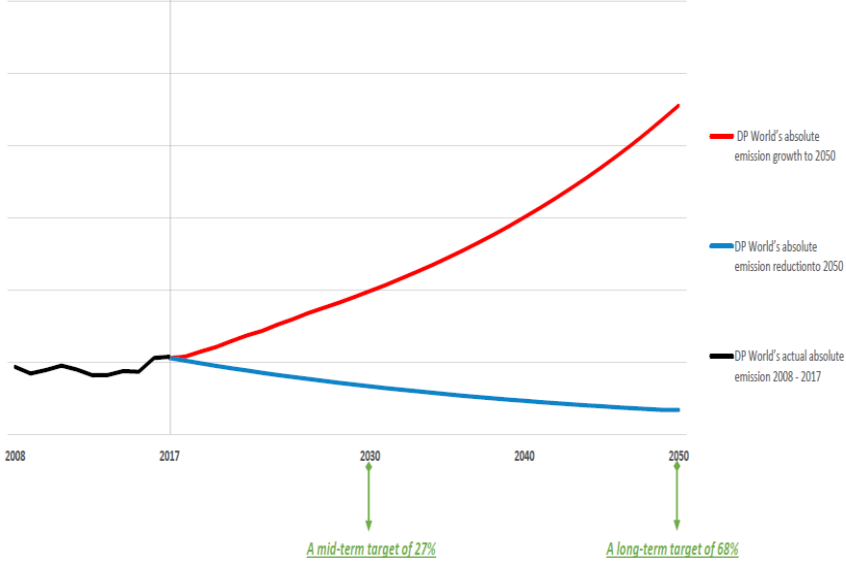
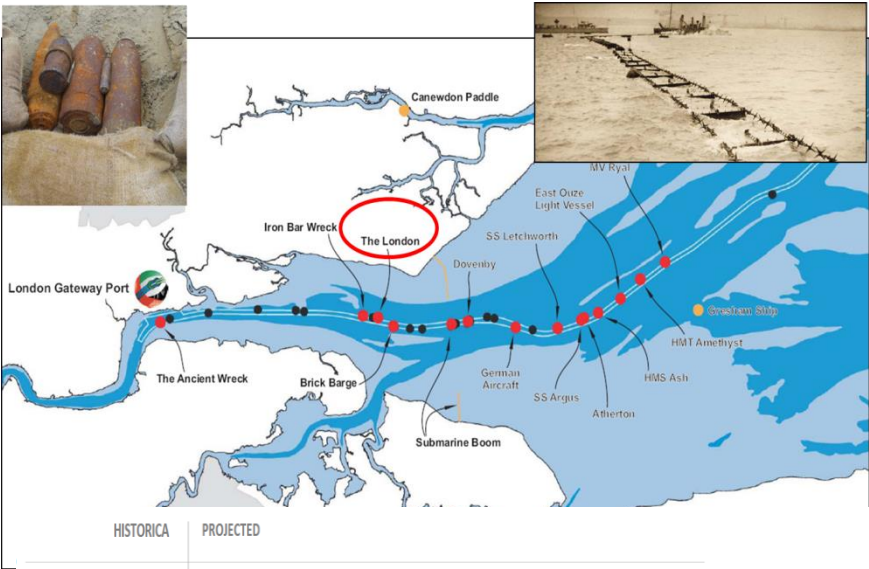


Air Quality Monitoring

- First draft results received in January 2019 indicate that all of the port and surrounding area should be under 40 μgm^3 , although awaiting regional calibration.
- SO₂ monitoring planned for Q1-Q2 2019.
- Commitment to create DP World London Gateway air quality strategy, once DEFRA Air Quality Strategies requirements published.



Other Initiatives





Thank you

Any questions: Thomas.coulter@dpworld.com