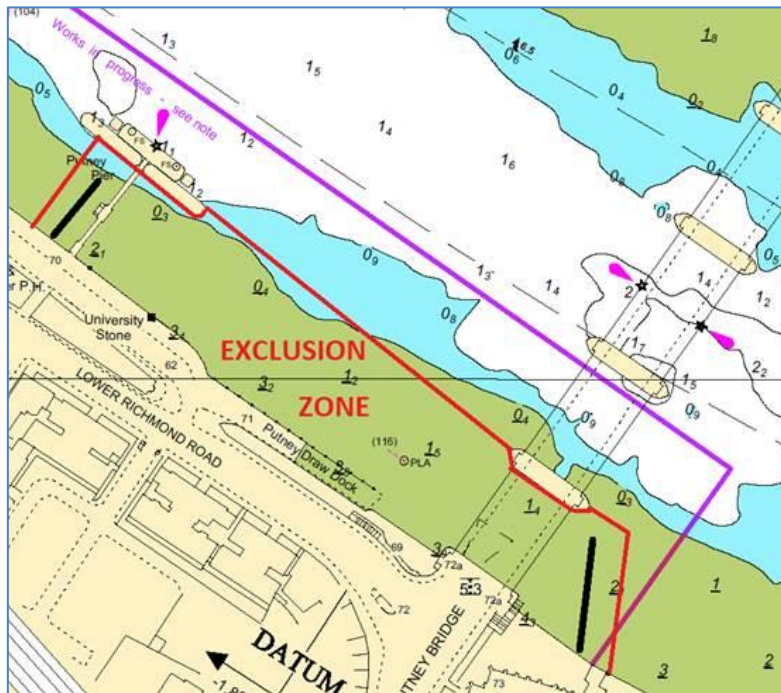


NOTICE TO MARINERS U11 of 2018

BARN ELMS REACH PUTNEY EMBANKMENT CONSTRUCTION WORKS

Mariners are advised that on or about 11 June 2018, contractors working on the Tideway Tunnel Project will commence works which will involve river bed preparation, constructing a temporary campshed, and a cofferdam at Putney.

Please see the chartlet below depicting the location of the construction works primarily between Putney Pier and Number 5 arch Putney Bridge.



No vessels other than those engaged in the works shall enter the navigation exclusion zone depicted on the chartlet by the red lines supplemented at the western and eastern ends by floating pontoons.

The works which include dredging, diving, sheet piling and back filling operations are expected to take approximately 2 years. These will take place using a variety of barges including crane barges, jack up barges, supply barges, tugs, work boats and multicat vessels. By the nature of their works they will be restricted in their ability to manoeuvre. The vessels involved will maintain a listening watch on VHF channel 14. Towing operations will be escorted by a safety boat between Wandsworth Bridge and the works.

At times London VTS will broadcast requests for vessels to “proceed with caution” or “proceed at slow speed”, as described in Permanent Notice to Mariners 4 of 2014 and the International Code flags “Romeo Yankee” will be displayed.

Vessels are requested to be mindful of the nature of the works, be aware of vessels proceeding to and from the works, their wash when passing the works, and to pass at a safe distance particularly from any yellow pellet buoys which may be marking anchors, sinkers or other under water obstructions.

Further details will be broadcast by London VTS on VHF Channel 14.

21st May 2018

Port of London Authority
London River House, Royal Pier Road,
Gravesend, Kent DA12 2BG

BOB BAKER
CHIEF HARBOUR MASTER



EXPIRY DATE: 31st December 2020
TO RECEIVE FUTURE NOTICES TO MARINERS BY **E-MAIL**,
PLEASE REGISTER VIA OUR WEBSITE www.pla.co.uk
**Telephone calls, VHF radio traffic, CCTV and radar traffic images may
be recorded in the VTS Centres at Gravesend and Woolwich**

