

NOTICE TO MARINERS U6 of 2017

HORSE REACH TO MORTLAKE REACH

TEMPORARY WATER QUALITY MONITORING BUOYS

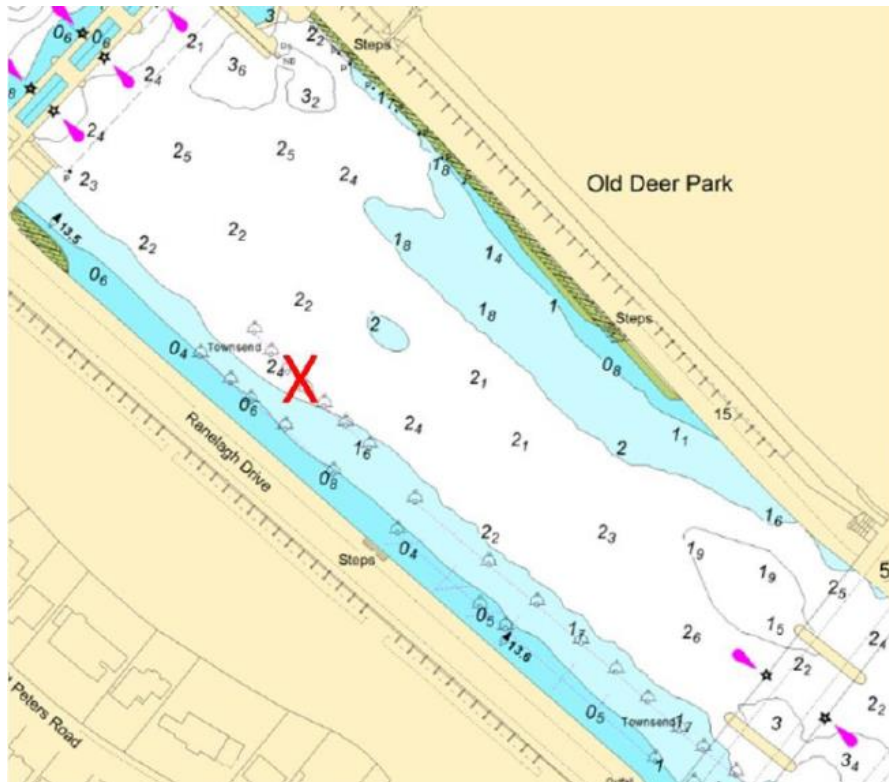
Mariners are advised that on or about 22nd June 2017, contractors working on behalf of Thames Water will be installing a number of buoys in the upper reaches of the tidal Thames. Each buoy will be installed with water quality monitoring sensors and data logger to enable monitoring of water quality in the tideway at various intervals. It is anticipated that the trial will last for three months and once complete the temporary buoys will be removed.

The temporary buoys being installed will have a diameter of 600mm and be of a Special Mark (yellow in colour) design with lighting characteristics of FI2(Y). They will be positioned at the following locations (chart extract below):

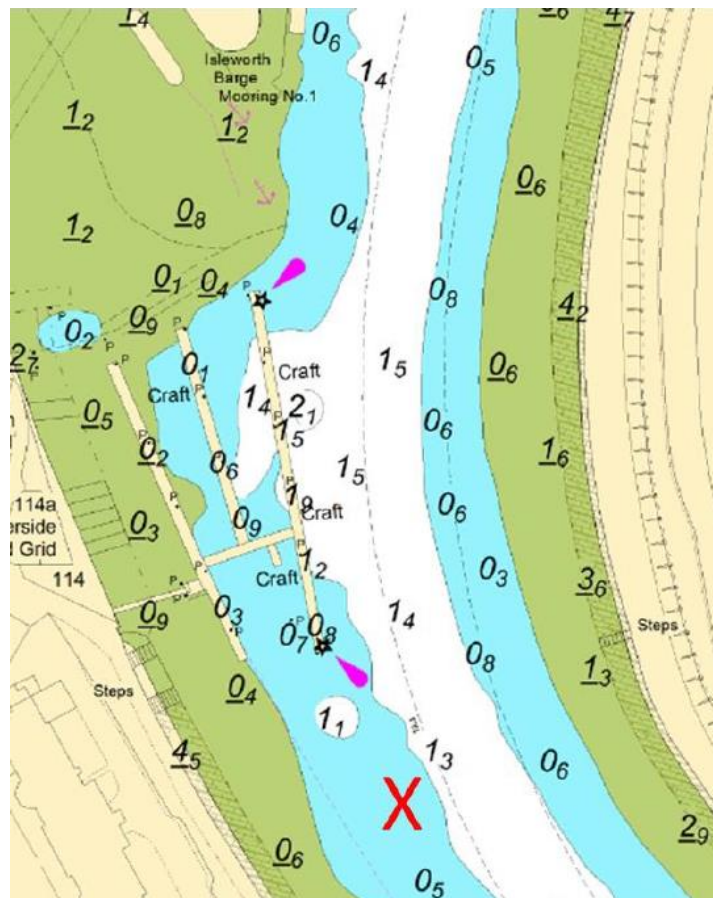
- Horse Reach – Ranelagh Drive (north shore, upriver of No. 1 arch Richmond Lock, Weir and Footbridge)
- Sheengulls Reach – Thistleworth (north shore, approximately 60m upriver of Thistleworth Marina Pier)
- Sheengulls Reach – Sheengull Steps (south shore, at the downriver end of Isleworth Ait)

MV BULLDOG will be laying and recovering the temporary buoys. In addition, a further sensors and data logger will be fitted to the PLA Syon Reach rowing buoy, the lighting characteristic on this buoy will not be change during this trial. Two further sensors and data loggers will be fitted to the Environment Agency automatic water quality monitoring stations at Brentford Barge, Syon Reach and Kew Barge, Mortlake Reach (Upper).

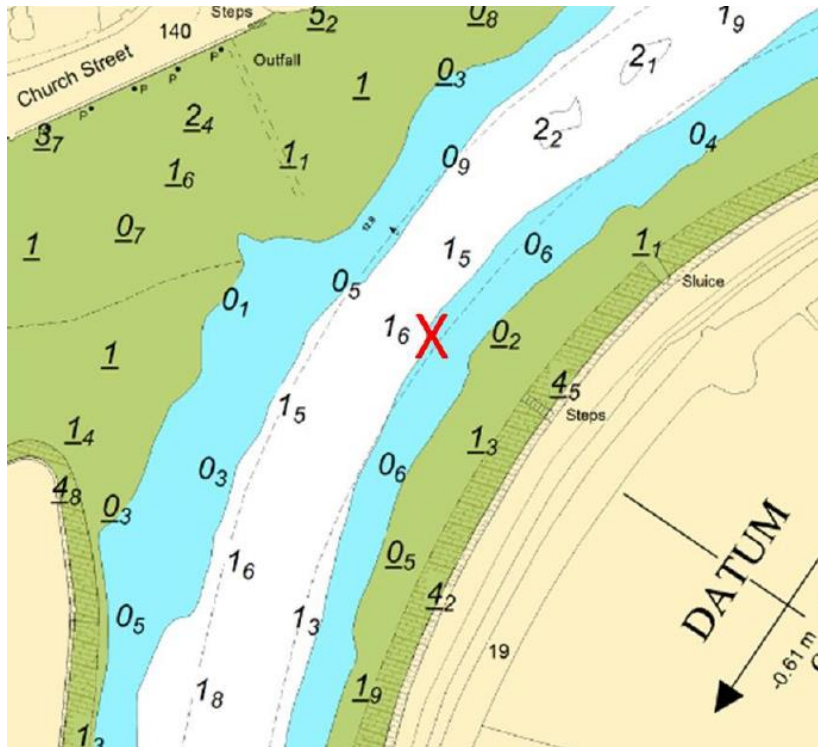
When works are being carried out at all of the above locations, mariners are requested to be mindful of the nature of the works and to pass at a safe distance from the operations.



Horse Reach – Ranelagh Drive



Sheengulls Reach - Thistleworth



Sheengulls Reach – Sheengull Steps

9 June 2017

Port of London Authority
 London River House, Royal Pier Road,
 Gravesend, Kent DA12 2BG

BOB BAKER
CHIEF HARBOUR MASTER



EXPIRY DATE: 30th September 2017
 TO RECEIVE FUTURE NOTICES TO MARINERS BY **E-MAIL**,
 PLEASE REGISTER VIA OUR WEBSITE www.pla.co.uk
**Telephone calls, VHF radio traffic, CCTV and radar traffic images may
 be recorded in the VTS Centres at Gravesend and Woolwich**

