

NOTICE TO MARINERS U9 of 2021

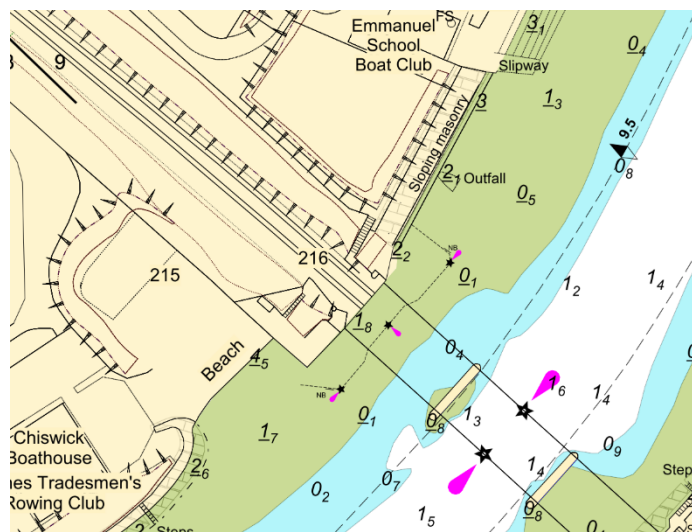
CORNEY REACH BARNES RAIL BRIDGE TEMPORARY COFFERDAM

This notice supersedes Notice to Mariners U5 of 2021

Construction works continue on the new Dukes Meadows Footbridge by contractors working on behalf of Hounslow Borough Council.

The No.1 Arch of Barnes Rail Bridge has reopened to navigation. Mariners are advised that a temporary cofferdam has been constructed within the no.1 arch of Barnes Rail Bridge. The cofferdam is marked at the upper, middle and lower end by tiger stripes by day, and at night the cofferdam is marked by a fixed white light above each tiger stripe. See below chart extract.

Bridge piling works will be taking place inside the cofferdam before the float out of the new Dukes Meadow footbridge.



Further details will be broadcast by **London VTS** on **VHF Channel 14**.

09 December 2021

Port of London Authority
London River House, Royal Pier Road,
Gravesend, Kent DA12 2BG

Paul Lorimer
Assistant Harbour Master

TO RECEIVE FUTURE NOTICES TO MARINERS BY **E-MAIL**,
PLEASE REGISTER VIA OUR WEBSITE www.pla.co.uk
Telephone calls, VHF radio traffic, CCTV and radar traffic images may be recorded in the VTS Centres at Gravesend and Woolwich
All Current Notices to Mariners can be found here - <http://www.pla.co.uk/ntm>