

NOTICE TO MARINERS No.L17 of 2011

GRAVESEND REACH TOWN PIER FERRY PONTOON

On or about 22nd August 2011 work will commence on preparation and installation of pontoon and brow at Town pier. Installation work of pontoon is expected to complete December 2011.

The principal marine plant will involve various types of spud leg pontoons including crane platform, burden craft and jack up rig at different times or in combination plus additional support and safety craft (see chartlet overleaf).

Spud leg pontoon	HAVEN SEARANGER	Crane platform
Spud leg pontoon	HAVEN SEAVOYAGER	Crane platform
Spud leg pontoon	HAVEN SEARIDER	Burden craft
Spud leg pontoon	HAVEN SEAROVER	Burden craft
Jack up rig	HAVEN SEACK 1	Drill rig pre-boring platform
Jack up rig	HAVEN SEACK 2	Drill rig pre-boring platform
Crawler crane	Un-named (various)	Shore or pontoon mounted
Safety boats	KG2 CHALLIS 10 HAVEN STAR	
Tugs	HAVEN SUPPORTER CHIEFTAN UNICO HORTON	

All principal marine plant will display lights and shapes in accordance with the International Regulations for Prevention of Collisions at sea 1972 as amended, rule 27 b, and will maintain a listening watch on channel 68.

There is no inshore passage between works and Town pier.

All vessels are to proceed with caution and at reduced speed passing Town pier.

Details of vessels on site will be included on river broadcast. Further information can be obtained by contacting London VTS either by telephone 01474 560311.

20 July 2011

Port of London Authority
London River House
Royal Pier Road
Gravesend, Kent DA12 2BG

DAVID SNELSON CB FNI
CHIEF HARBOUR MASTER



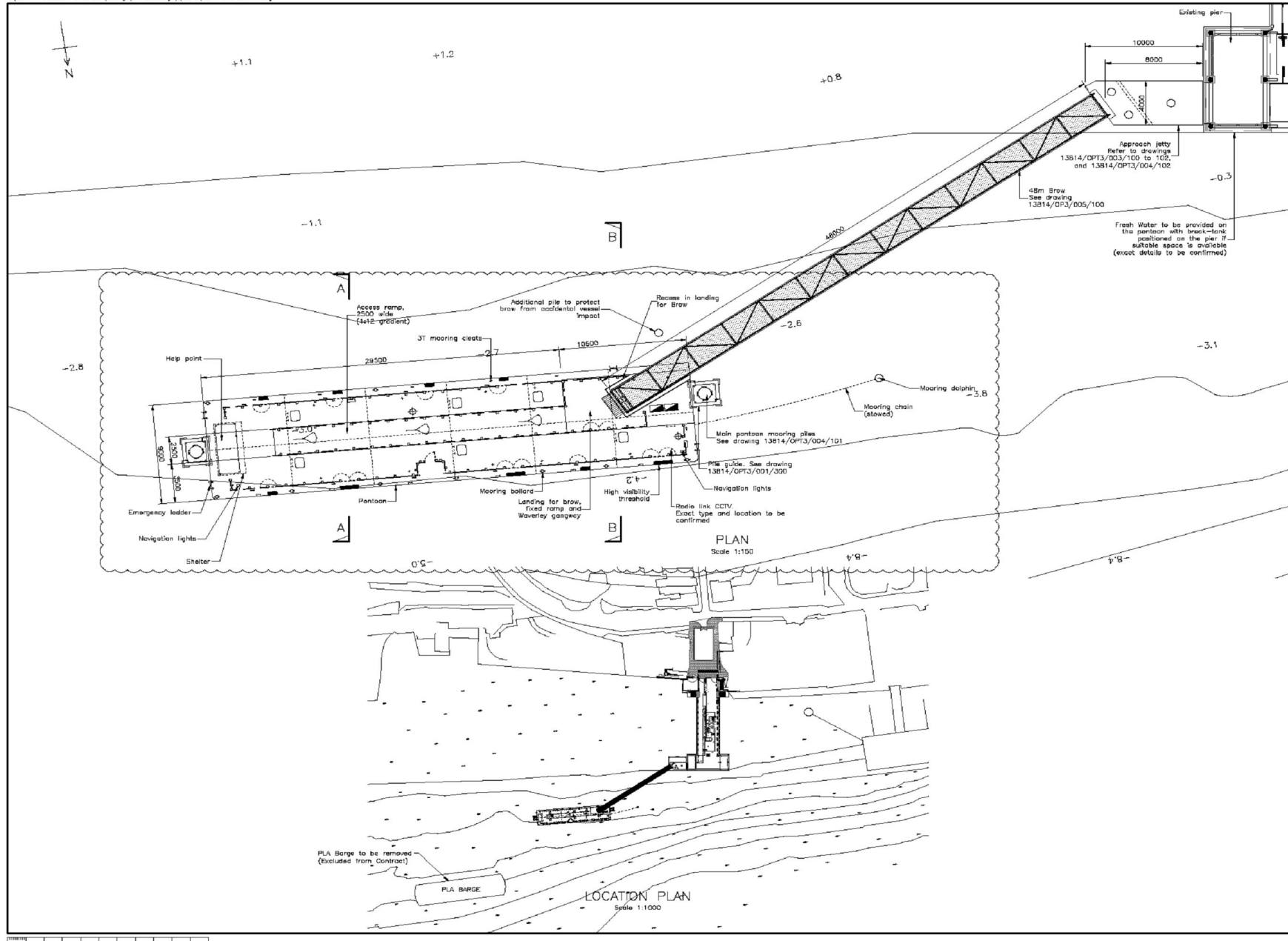
EXPIRY DATE: December 2011
TO RECEIVE FUTURE NOTICES TO MARINERS BY E-MAIL,
PLEASE REGISTER VIA OUR WEBSITE www.pla.co.uk

Telephone calls, VHF radio traffic, CCTV and radar traffic images may be recorded in the VTS Centres at Gravesend and Woolwich.



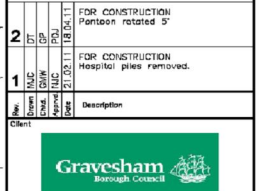
L17 of 2011 Chartlet

Y:\13814 - Gravesend Pier Pontoon\Drawings\Front\Drawings\Option 3\13814-0PT3-000-001.dwg



- NOTES**
- All dimensions in millimetres unless stated otherwise.
 - All levels are in metres related to Chart Datum, 3.120m below Ordnance Datum Newlyn at Tilbury.
 - This drawing is to be read in conjunction with Engineer's specification.
 - Bathymetric data was obtained from the PLA sheet of Gravesend Reach (Middle), dated December 2007 but based on hydrographic survey carried out between September 2006 and October 2007.
 - Main Pontoon to comprise a steel box pontoon subdivided into sufficient watertight compartments to ensure damage stability. Provision for water ballast to be made to allow pontoon to be ballasted level and to correct freeboard. Each compartment to be provided with means of access, sounding pipe and breather pipe.
 - All handrails on approach jetty, linkspan and pontoon to be similar to that shown on Architects drawing.

2	Rev	Drawn	MAC	DT	SP	FOR CONSTRUCTION Pontoon rotated 5°
1	Rev	Drawn	MAC	DT	SP	FOR CONSTRUCTION Hospital piles removed.
	Rev	Drawn	MAC	DT	SP	Description



GRAVESEND TOWN PIER FERRY PONTOON

THOMAS FORD & PARTNERS
CHARTERED ARCHITECTS SURVEYORS

KEY ARRANGEMENT OPTION 3 SHEET 1 OF 2



<small>Charles Hays, Regional Head, South-East, Southampton, Hampshire, UK Tel: 01703 604110 Fax: 01703 604111 www.gifford.com</small>			
Scale (at A3)	Date	Drawn	DC
AS SHOWN	Oct 10		
Orig no.			2

13814/0PT3/000/001

ORIGINAL DRAWING SIZE: A11 x 594