

## **NOTICE TO MARINERS**      No.L23 of 2011

# **UPDATE ON ENVIRONMENTAL MONITORING STATIONS BETWEEN LONDON GATEWAY SITE, MAPLIN SANDS AND OAZE**

**This notice supersedes Notice to Mariners L1 of 2011 which is hereby cancelled.**

The current positions of the environmental monitoring buoys are as follows:

<b>Station names</b>	<b>WGS84 latitude</b>	<b>WGS84 longitude</b>	<b>Description</b>	<b>Description</b>
LG Red Line 1A	51°29.10N	00°27.25E	Special Mark	Fl.Y.4s
LG Red Line 1B	51°28.28N	00°26.80E	Special Mark	Fl.Y.4s
LG Red Line 2	51°29.53N	00°28.66E	Special Mark	Fl.Y.4s
LG Red Line 3	51°29.88N	00°30.84E	Special Mark	Fl.Y.4s
LG Red Line 4	51°30.00N	00°33.89E	Special Mark	Fl.Y.4s
LG Red Line 5	51°30.31N	00°37.08E	Special Mark	Fl.Y.4s
LG Red Line 6	51°29.83N	00°39.92E	Special Mark	Fl.Y.4s
LG Red Line 7	51°29.94N	00°43.11E	Special Mark	Fl.Y.4s
LG Red Line 8	51°29.11N	00°46.92E	Special Mark	Fl.Y.4s
LG Red Line 9	51°30.06N	00°49.01E	Special Mark	Fl.Y.4s
LG Red Line 10	51°29.20N	00°49.68E	Special Mark	Fl.Y.4s
LG Red Line 11	51°29.57N	00°56.73E	Special Mark	Fl.Y.4s
LG Sensitive Receiver 1	51°26.67N	00°23.70E	No Buoy	
LG Sensitive Receiver 2	51°30.00N	00°26.97E	Pellet Buoy	
LG Sensitive Receiver 3	51°30.04N	00°27.50E	Pellet Buoy	
LG Sensitive Receiver 4	51°30.23N	00°27.57E	Pellet Buoy	
LG Sensitive Receiver 5	51°30.46N	00°31.70E	No Buoy	
LG Sensitive Receiver 7	51°31.16N	00°39.60E	Special Mark	Fl.Y.4s
LG Sensitive Receiver 8	51°31.08N	00°47.85E	Pellet Buoy	
LG Sensitive Receiver 9	51°32.01N	00°51.09E	Pellet Buoy	
LG Sensitive Receiver 10	51°33.00N	00°54.00E	Pellet Buoy	
LG Sensitive Receiver 11	51°33.89N	00°56.24E	Pellet Buoy	

**See attached chartlets**

### **Sensitive Receiver 6 removal**

Sensitive Receiver 6 has been removed as agreed by the regulators.

### **Working areas around Red line Monitors**

Approximate 200m by 40m working areas are in place whilst setting up and servicing each Red Line monitor buoy.

Red line buoys within the working area mark the presence of twin mooring clumps and seabed frames, mooring lines and cables. Small vessels may be anchored within the working area servicing the monitors (See working areas diagram attached).

### **Defective or non serviceable Red Line monitors**

Rapid Deployment buoys are deployed temporarily near a Red Line monitor within the working area in order to assure the continued measurement and delivery of environmental monitoring data and may remain in position for a week at a time (see attached diagram of rapid deployment buoy).

**Mariners should exercise caution when navigating in the vicinity of monitoring buoy sites and should be aware of the potential for rapid deployment monitoring buoys and service vessels within the immediate vicinity of each position.**

Latest information on positions of redline monitors, rapid deployment buoys and verification monitoring buoys can be obtained from London VTS either by telephone 01474 560311 or as appropriate on VHF 68 or 69.

---

**21 November 2011**

Port of London Authority  
London River House  
Royal Pier Road  
Gravesend, Kent DA12 2BG

**DAVID PHILLIPS  
CHIEF HARBOUR MASTER**



EXPIRY DATE: TBC  
TO RECEIVE FUTURE NOTICES TO MARINERS BY E-MAIL,  
PLEASE REGISTER VIA OUR WEBSITE [www.pla.co.uk](http://www.pla.co.uk)

Telephone calls, VHF radio traffic, CCTV and radar traffic images may be recorded in the VTS Centres at Gravesend and Woolwich.



PORT OF LONDON  
AUTHORITY

## Definition of working areas around Red Line Monitors

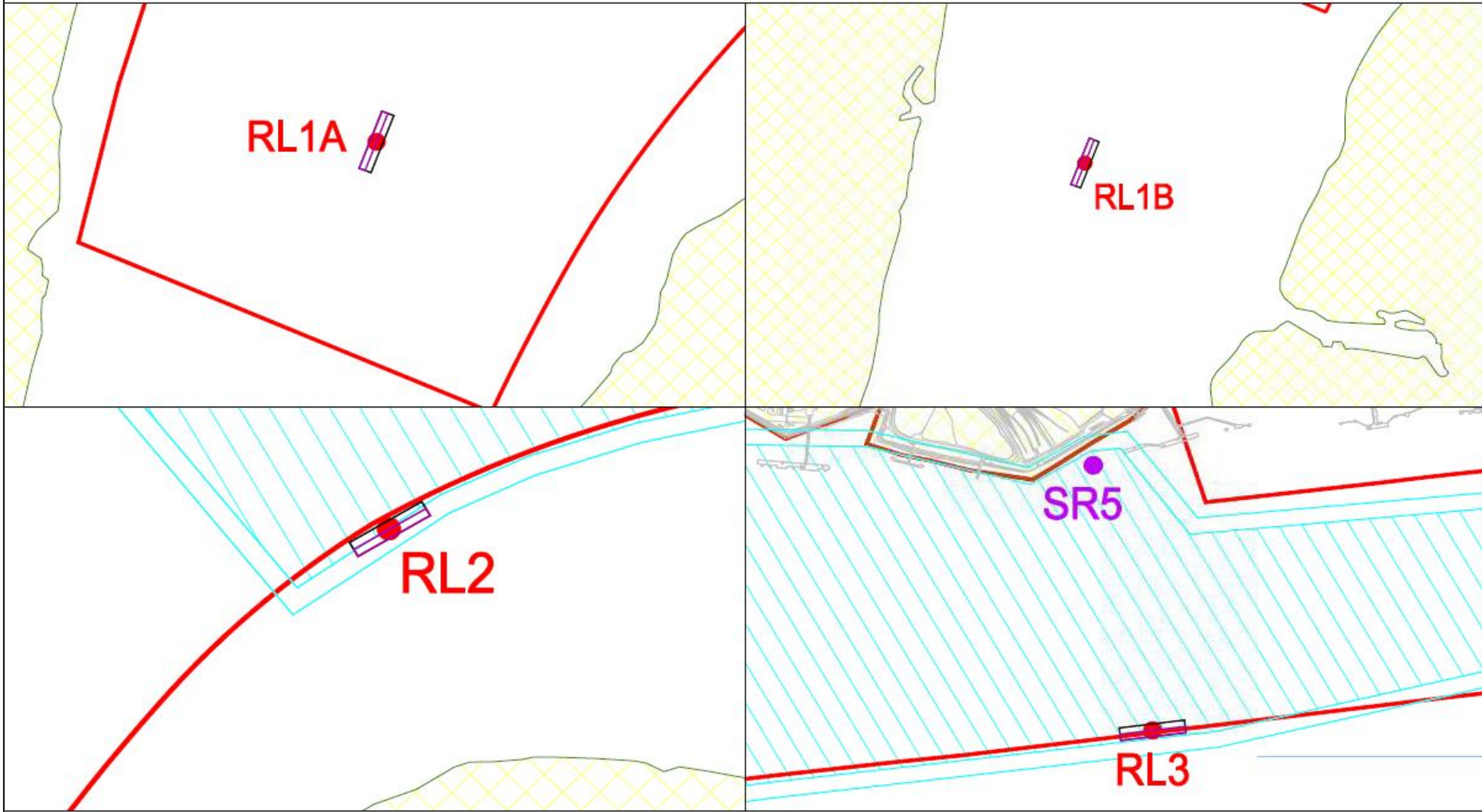
**Red Line Service Areas:**

- Red Line Service Areas of 200m x 40m
- Presence of twin moorings, seabed frames, mooring lines and cables
- Presence of Red Line buoys
- Vessels anchored while performing buoy maintenance

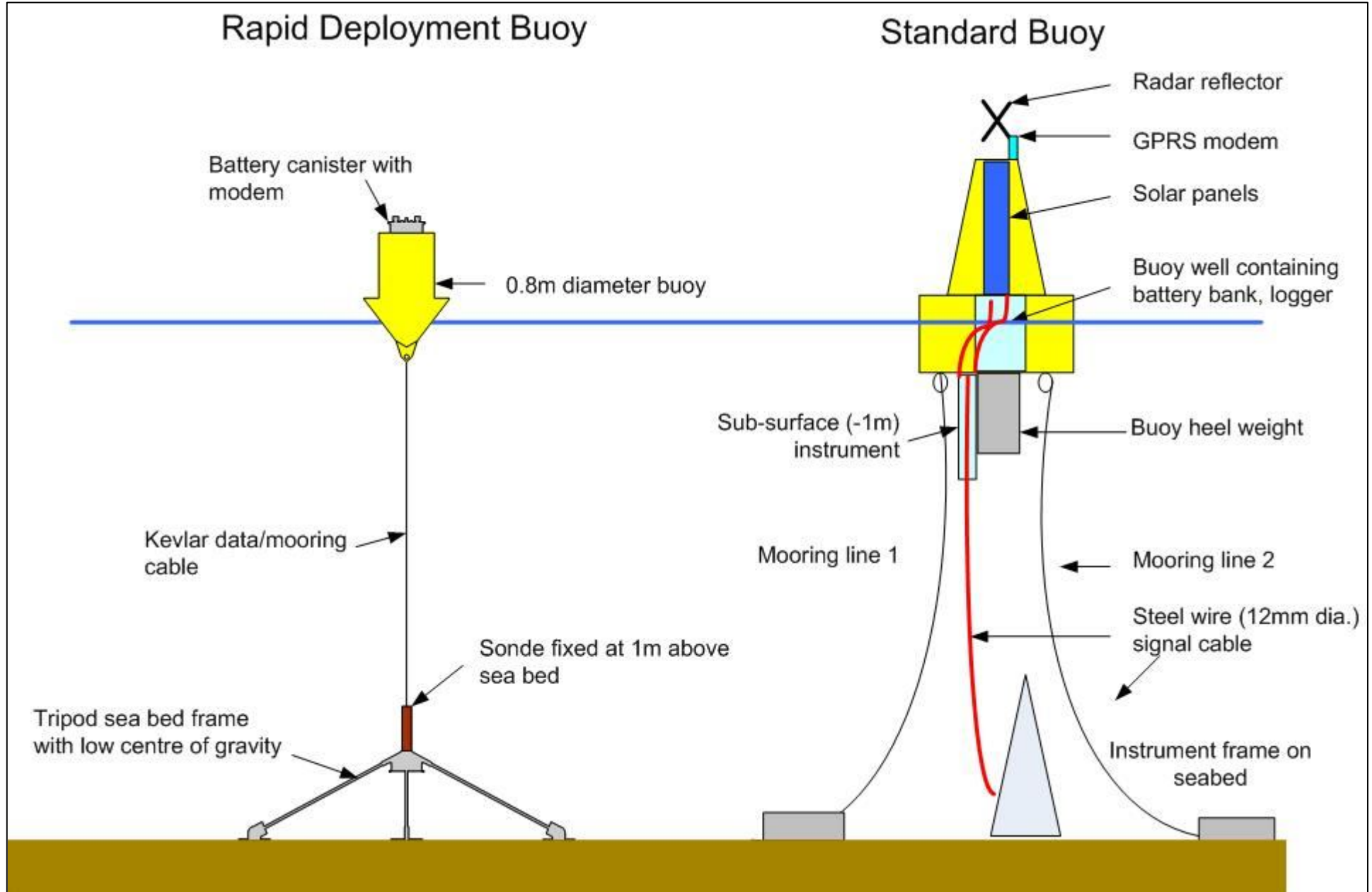
● Red Line Monitors & Buoys

**Areas of potential short term deployment of Monitoring Equipment**

- Potential deployment within 200m x 20m
- Temporary deployments with seabed frames and cables
- Presence of temporary Rapid Deployment buoys
- Vessels anchored while deploying or recovery
- For periods up to 1 week at a time



Chartlet 2



Chartlet 3

