

## **NOTICE TO MARINERS** No.M1 of 2012

### **TEMPORARY OLYMPIC MOORINGS BARKING REACH, GALLIONS REACH, BLACKWALL REACH, LIMEHOUSE REACH**

PLA Marine Services will lay temporary moorings in the following locations between the 1<sup>st</sup> February 2012 and 31<sup>st</sup> March 2012.

- **Thamesmead Lower**  
10 x mooring buoys at 20m spacing between the following co-ordinates  
51 30.72N / 00 07.00E  
51 30.77N / 00 07.17E
- **Thamesmead Upper**  
10 x mooring buoys at 20m spacing between the following co-ordinates  
51 30.62N / 00 06.28E  
51 30.64N / 00 06.47E
- **Gallions Royal Albert Dock**  
5 x mooring buoys at 20m spacing between the following co-ordinates  
51 30.43N / 00 04.89E  
51 30.48N / 00 04.94E
- **Below Folly House Barge Roads**  
5 x mooring buoys at 20m spacing between the following co-ordinates  
51 29.98N / 00 00.38W  
51 29.92N / 00 00.36W
- **Below South Dock Marina**  
5 x mooring buoys at 20m spacing between the following co-ordinates  
51 29.62N / 00 01.89W  
51 29.56N / 00 01.86W

Trot moorings will be laid in all of the above locations, providing a number of small craft mooring solutions. Buoys will be unlit. Please see chartlet attached.

Further details will be broadcast by London VTS on VHF Channel 14.

**This Notice to Mariners replaces M87 of 2011.**

**3 January 2012**

Port of London Authority  
London River House  
Royal Pier Road  
Gravesend, Kent DA12 2BG

**DAVID PHILLIPS  
CHIEF HARBOUR MASTER**



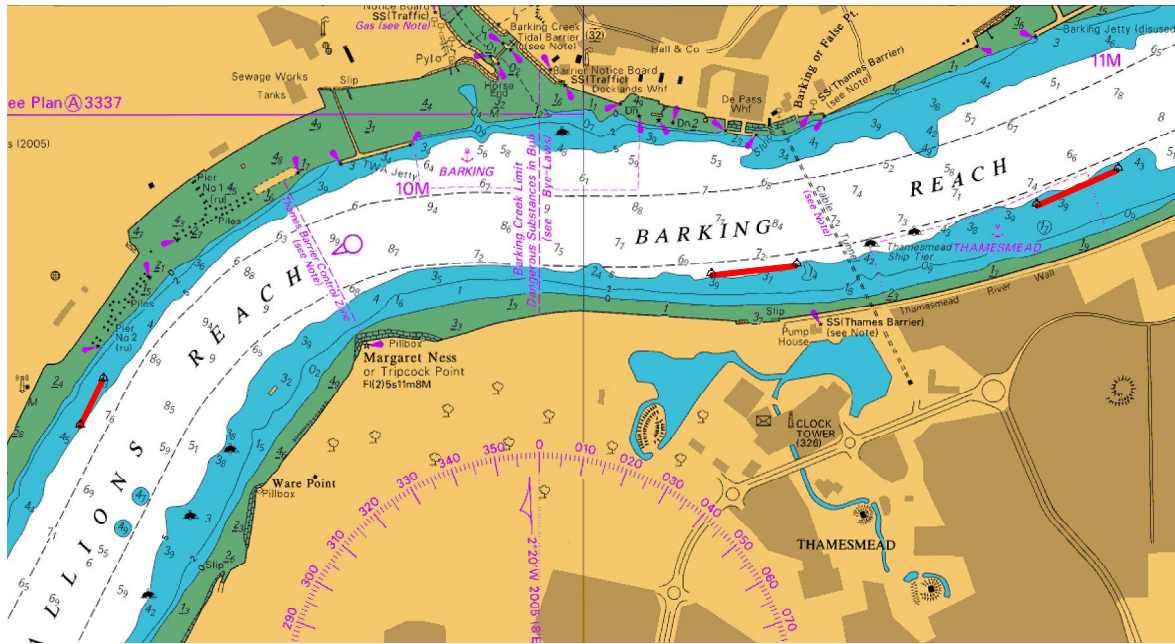
EXPIRY DATE: January 1<sup>st</sup> 2013  
TO RECEIVE FUTURE NOTICES TO MARINERS BY E-MAIL,  
PLEASE REGISTER VIA OUR WEBSITE [www.portoflondon.co.uk](http://www.portoflondon.co.uk)

Telephone calls, VHF radio traffic, CCTV and radar traffic images may be recorded in the VTS Centres at Gravesend and Woolwich.



PORT OF LONDON  
AUTHORITY

## Gallions, Thamesmead Upper and Lower



## South Dock and Folly House Barge Roads

