

NOTICE TO MARINERS No.M62 of 2011

BUGSBYS REACH

CABLE CAR – CONSTRUCTION WORKS

RESTRICTED NAVIGATION

On or about 15 August 2011 until the end of April 2012, works will take place on the construction of the South Tower and associated river bed infrastructure by contractors working on behalf of The Docklands Light Railway as part of the GLA project to erect a Cable Car across Bugsby's Reach in the vicinity of Blackwall Point.

The area of works extends from the downriver end of North Greenwich Pier in a south-easterly direction for approximately 190 metres up to a distance of 117 metres from the Embankment Wall. Due to the varied nature of works (including anchors laid for construction barges and the movement of barges, tugs and service workboats), entry into the works area is restricted.

Only vessels and craft involved in the works, or proceeding directly to or from the down stream V berth on North Greenwich Pier, or the closest moorings at the south east extremity of the works, may enter the restricted area. The latter two groups may only enter the restricted area for the minimum time necessary and via the shortest intrusion without impeding works craft, to safely effect arrival or departure at the V berth or moorings.

Details of the restricted area are depicted on the chartlet overleaf.

Barges involved in the works will maintain a continuous VHF watch on VHF Channel 14 and will also be fitted with Thames AIS as required and display the lights and shapes as prescribed in Rule 27 of the International Regulations for Preventing Collisions at Sea 1972 namely:

- By day, three black shapes in a vertical line the highest and lowest of which are balls and the middle one a diamond.
- By night, three all round lights in a vertical line the highest and lowest of which are red and the middle one white.

London VTS will broadcast further information on VHF Channel 14. Further Notices to Mariners will be published as and when specific works requires.

Persons in charge of vessels are to navigate with particular care and proceed at slow speed when passing the works.

11 August 2011

Port of London Authority
London River House
Royal Pier Road
Gravesend, Kent, DA12 2BG

DAVID SNELSON CB FNI
CHIEF HARBOUR MASTER

EXPIRY DATE: 30 April 2012

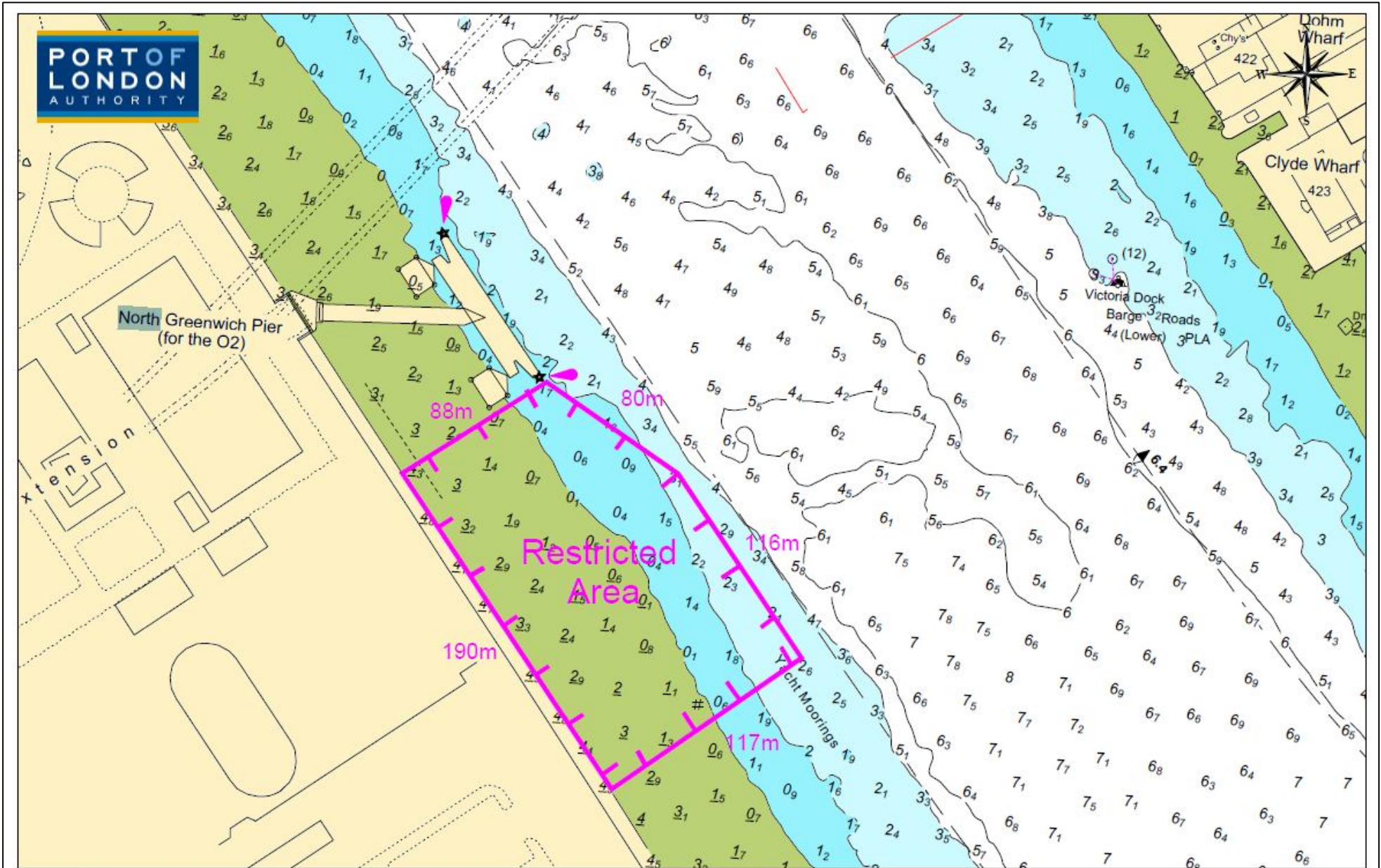
TO RECEIVE FUTURE NOTICES TO MARINERS BY E-MAIL,
PLEASE REGISTER VIA OUR WEBSITE www.pla.co.uk



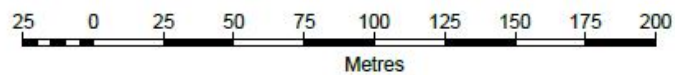
Telephone calls, VHF radio traffic, CCTV and radar traffic images may be recorded in the VTS Centres at Gravesend and Woolwich.



M62 of 2011 Chartlet



Restricted Works Area - London Cable Car Project.



File location:
PLA Hydrographic Service

Scale: 1:2500 10/08/11