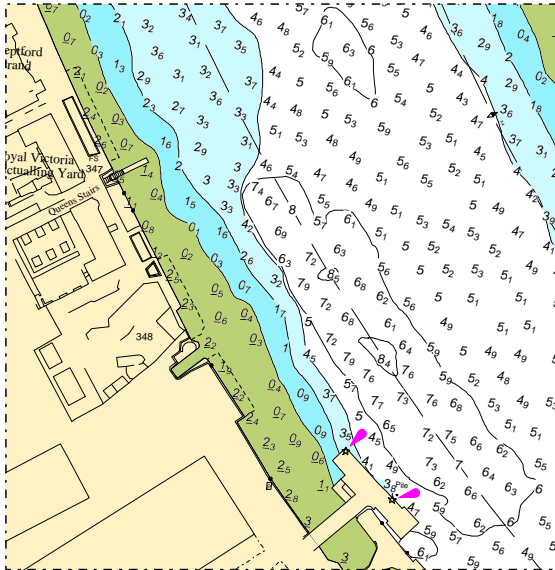


**Port of London Authority
Chart Correction Advice
Date: 20th October 2009**

Chart: Limehouse to Greenwich Reach
PLA Chart No. 320
HO Ref No. 113-320-043
Correction No. 1

Office Ref: 2009/06

The accompanying three block corrections apply to Chart PLA 320: Limehouse to Greenwich Reach which is published in the Port of London Colour Chart Folio 2 in colour at the scale of 1:5000



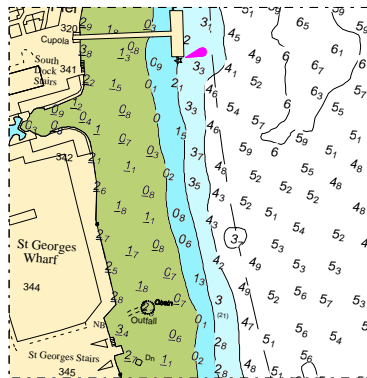
Block A:

Removal of River Structures:

The outer floating loading ramp and three mooring dolphins at Convoys Wharf have been removed. The piles have been cut off one metre below the riverbed. The charted structures and associated lights have been expunged from the chart.

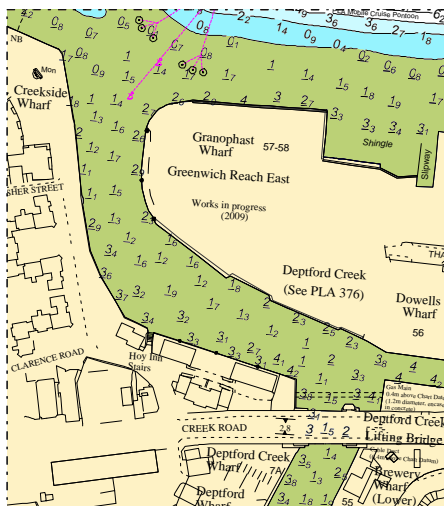
Removal of Moorings:

PLA Mooring Buoys Nos 22 and 23 upstream of Convoys Wharf abreast of "Queens Stairs" and all associated ground tackle have been pulled and removed from the river. The three mooring wires charted at Convoys Wharf have been removed.



Block B:

Mooring Nos 20 and 21 entitled "Rotherhithe Clipper Fuel Barge" have been pulled and removed from the river.



Block C:

Revision of Depths:- A survey was undertaken in the vicinity of Deptford Creek covering an area from the creek entrance to 100 upstream of the Deptford Creek Lifting Bridge, soundings have been updated.

Port Hydrographer

Dated