

PLA EBB TIDE FLAG WARNING ADVICE
The PLA has established a warning system to indicate potential fast ebb tide flows created by land water from the non-tidal Thames (fluvial flow).

- There are three main levels of advice, which are:
• RED FLAG - Extreme Caution - EBB TIDE Very Strong Fluvial Flows
• YELLOW FLAG - Caution - EBB TIDE Strong Fluvial Flows
• GREEN FLAG - Average Fluvial Flow Conditions

In addition there is a fourth level (BLACK FLAG) of advice for all river users to note; when there are low fluvial flows and the Richmond Lock low water reads below 0m.

Teddington to Broadness

NAVIGATION ABOVE PUTNEY BRIDGE

Rowing Navigation Buoys

There is a 1m deep channel on the side of the river, the edge of which is marked by red and green buoys between Putney and Brentford.

Recreational Craft

There may be a lot of recreational boats on the move above Putney Bridge, particularly at weekends. Regardless of the 8 knot speed limit vessels must pay attention to their wash.

River Events

The area of river between Putney Bridge and Eel Pie Island is home to regattas and professional rowing events including the Boat Race and the Great River Race.

Reduced Upriver Depths

In prolonged dry weather periods, water rates flowing over Teddington Weir are often significantly reduced. This means that depths at low water in the upper reaches of the tidal Thames may be much lower than predicted or charted.

Mortlake and Syon Reach - Navigation in the vicinity of Kew Road Bridge and Pier

The river can be very busy around Kew Bridge with rowers, leisure boats, Stand-Up Paddleboarding and larger passenger boats manoeuvring on and off Kew Pier.

Drivers of motor vessels must sound one prolonged blast when approaching the bridge from either direction and when leaving Kew Pier.

River Thames Recreational Users Guide - NOT FOR NAVIGATION -

Hermitage Moorings

- two visitor berths for up to 2 weeks in 4
on river near Tower Bridge & St Katharine Docks
available to all vessels but best suited to barges
+44(0)20 74812122 manager@hcmoorings.org



ST. KATHARINE DOCKS
Over 20 restaurants, cafes & bars on site
Visitor & annual berths in the centre of London
Family friendly events all the year round

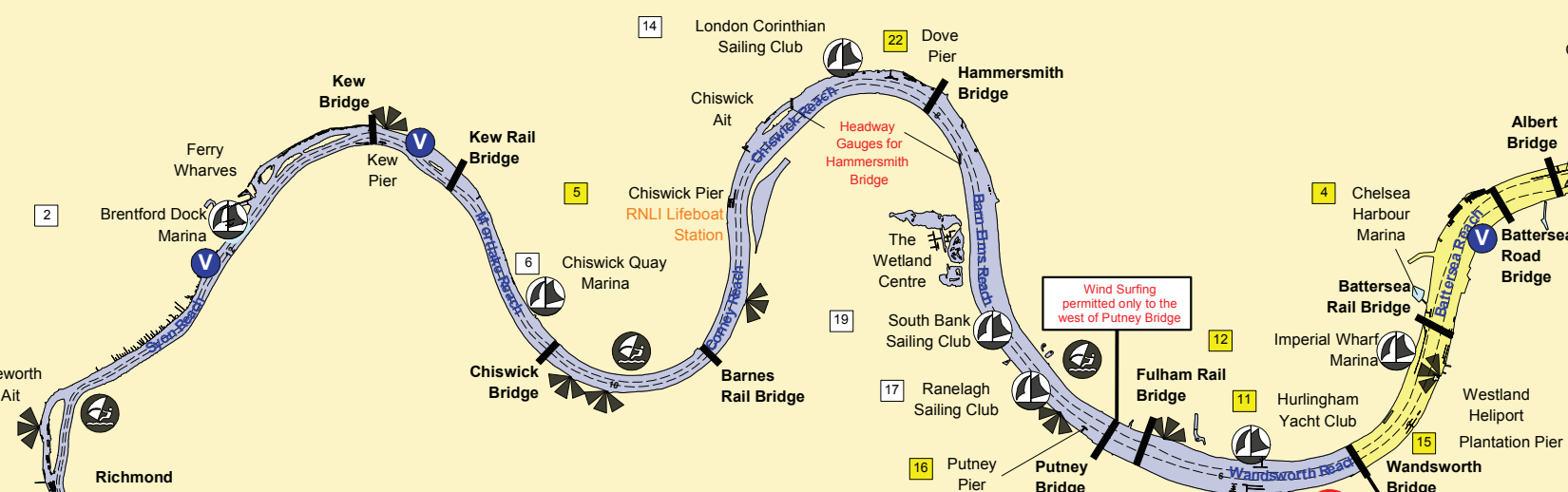
RECREATIONAL BOATERS JOIN THE TTNC - IT'S FREE!
The PLA's 'Tidal Thames Navigators' Club' gives all recreational boaters access to information tailored to their navigation on the river.

VISITOR MOORINGS

There are a number of visitor moorings available on the tidal Thames, all are owned and managed by various stakeholders, these include; yacht clubs, cruising clubs, marinas and the PLA.

THAMES MARINAS

Due to the tidal nature of the River Thames, the majority of marinas can only be accessed between 2 hours before and 2 hours after High Water.



- Starboard Buoy
Port Buoy
Headway Gauge
Spitway/Causeway
Flashing Light
Bridges
Yacht Clubs/Marinas
Yacht Clubs/Marinas with visitor moorings
PLA Visitor Mooring
High Speed Craft
Windsurfing
Refuelling Point
Speed Limit
8 Knot Speed Restriction
High Speed Craft Zone
Controlled Navigation Zone
Mileage Marker from London Bridge

RICHMOND LOCK & HALF TIDE WEIR

A half-tide lock and rising weir gates operate at Richmond. The lock is 76.2m long and 7.9m wide.

When the weir gates are down and the weir closed, the arches display the signals prescribed in the Thames Byelaws for closed bridge arches (see the Thames Bridges - Lights and Shapes section).

You can use the timber mooring piles along the Old Deer Park bank if you are waiting to use the lock.

Exclusion Zone

Mariners should not enter the Richmond Lock, Weir and Footbridge Exclusion Zone whilst the weirs are in the lowered position or when they are being operated.

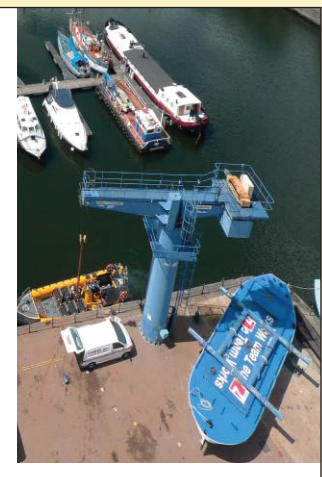
Only those vessels manoeuvring on or to the Lock island berths, vessels engaged in emergency operations or smaller vessels wishing to utilise the boat rollers in No. 1 arch are exempt from this requirement.

DRYING OUT FACILITIES

The PLA has two drying out facilities in the upper district at Strand-on-the-Green Grid and Isleworth Drawdock.

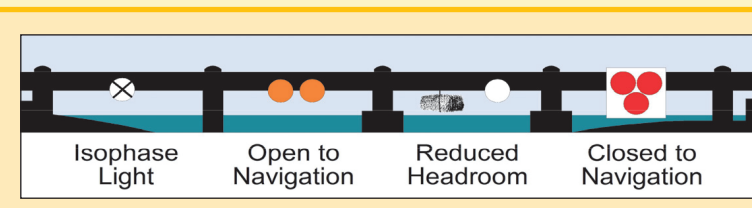
South Dock Marina Boatyard

- 20 Tonne crane for lift out or lift and hold for survey.
3.5 Tonne telehandler.
Mast and engine lifts.
Storage ashore for vessels up to 18 m LOA.
Various marine support services located on site.



SWIMMING

Swimming is not permitted in many areas of the tidal Thames. Swimmers face danger from powerful currents, undertows, underwater obstructions, deep mud, passing vessels and waterborne disease.



TOWER BRIDGE NAVIGATION

There is heavy congestion at all states of the tide near Tower Bridge, including large tugs and tows as well as passenger vessels operating between London Bridge, City, Tower, and St Katharine's piers.

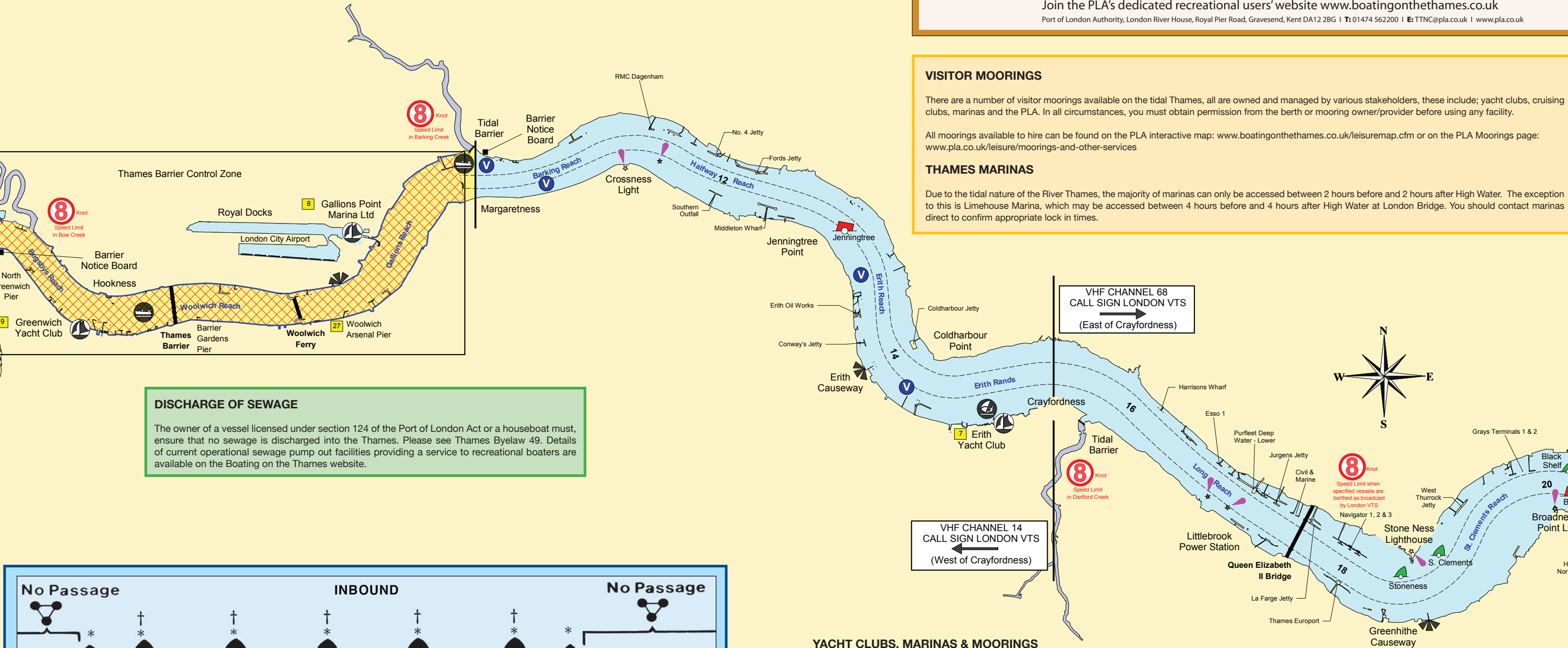
- In the summer, this congestion increases as private cruisers and yachts enter or exit St Katharine's Lock.
- You should navigate this area with extreme care using No. 1 (North) Arch of Tower Bridge inward bound if the way is clear to navigate.
- During the summer, large cruise ships are active in the Upper Pool to various moorings.

VESSEL SUITABILITY

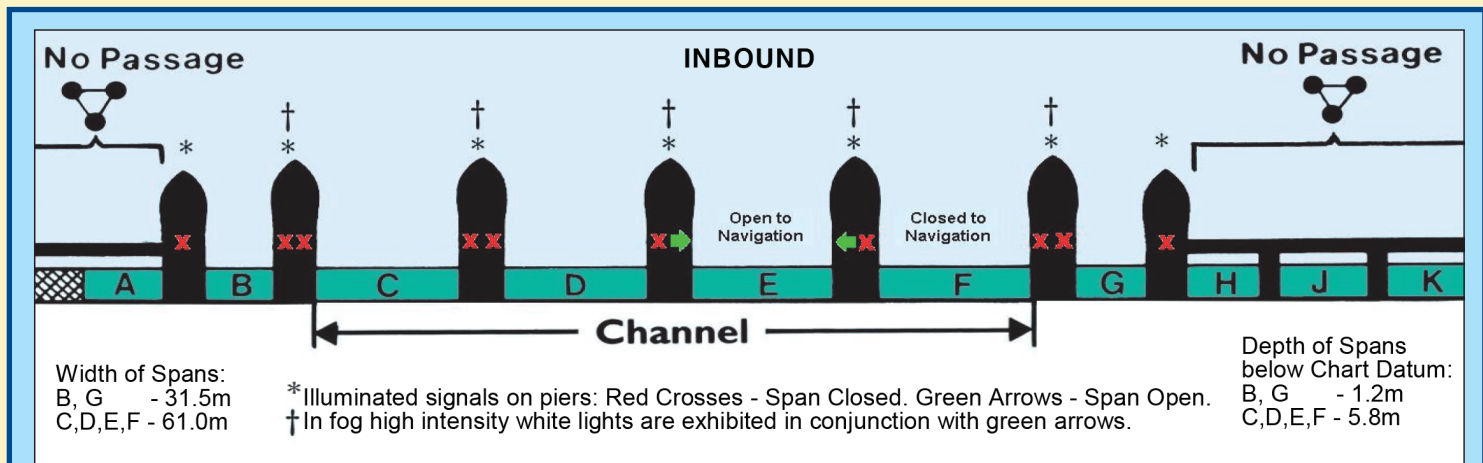
Before navigating on the tidal Thames you should ensure your vessel is suitable for the expected tidal and weather conditions.

You should carry out checks on your vessel to ensure that water cannot easily enter through any openings; for example engine room vents that are too close to the waterline, cabin doors left open or insufficiently sealed weed hatches.

Be aware that even on the calmest day river conditions can be exacerbated by the wash from vessels, particularly in the busy central London section.



DISCHARGE OF SEWAGE
The owner of a vessel licensed under section 124 of the Port of London Act or a houseboat must ensure that no sewage is discharged into the Thames.



THAMES BARRIER

The Thames Barrier consists of ten spans, lettered A to K, from south to north. Spans B to G are open to navigation, subject to planned restrictions for flood defence purposes.

General Direction Requirements

- All vessels fitted with a VHF radio navigating within the TBCZ, regardless of size, must seek permission from London VTS (via HF Channel 14) to proceed when:
• Leaving berths or locks within the TBCZ, and intending to pass through the Thames Barrier;

Small Vessels

All small vessels, not fitted with VHF radio (including dinghies, power boats, narrow boats, sculls, rowing boats and canoes), are advised to contact London VTS by telephone for allocation of a span.

Overtaking and Manoeuvring Restrictions

Any vessel seeking to overtake or carry out manoeuvres in the TBCZ must also get clearance from London VTS to do so in advance.

Vessels Under Sail

Vessels sailing between the Woolwich Ferry Terminal and Hookness must keep to the starboard side of the fairway and not impede any other vessels.

Routine Barrier Closures

These closures are notified by a Notice to Mariners, which can be accessed via www.boatingonthames.co.uk.

Other Flood Barriers

Head clearance above Mean High Water Springs:
• Barking Creek - 33.5m
• Dartford Creek - 12.2m
• Easthaven Creek - 3.3m
• Fobbing Creek - 9.3m
• Benfleet Creek - 1.6m

YACHT CLUBS, MARINAS & MOORINGS

- 1 Ahoy Centre
2 Brentford Dock Marina
3 Butlers Wharf
4 Chelsea Harbour Marina
5 Chiswick Pier
6 Chiswick Quay Marina
7 Erith Yacht Club
8 Gallions Point Marina Ltd
9 Greenwich Yacht Club
10 Hermitage Moorings
11 Hurlingham Yacht Club
12 Imperial Wharf Marina
13 Limehouse Marina
14 London Corinthian Sailing Club
15 Plantation Wharf
16 Putney Pier
17 Ranelagh Sailing Club
18 Richmond Yacht Club
19 South Bank Sailing Club
20 South Dock Marina
21 St Katharine Docks
22 The Dove Pier
23 Twickenham Yacht Club
24 W Hamerton & Co
25 West India Dock
26 Westminster Boating Base
27 Woolwich Arsenal Pier

STAND-UP PADDLEBOARDING

Stand-Up Paddleboarding is permitted on the tidal Thames between Teddington Lock and Putney Pier during the day providing you follow the 'Code of Practice for Paddling on the Tidal Thames'.

Downriver of Putney Pier the river is much busier, with the presence of fast ferries, plus barges with limited maneuverability. As a result, navigating a paddleboard requires greater knowledge, skill and preparation.

CRIME DOESN'T RESPECT OUR BORDERS
IF YOU SEE ANYTHING SUSPICIOUS ABOUT WHERE, WHEN OR HOW A VESSEL AND CREW ARE OPERATING, REPORT IT.
Call the Police on 101, quote KRAKEN!