



PORT OF LONDON  
AUTHORITY

Port of London Authority  
Chart Correction Advice  
Date: 27th July, 2017

**CCA No: 2017/23**

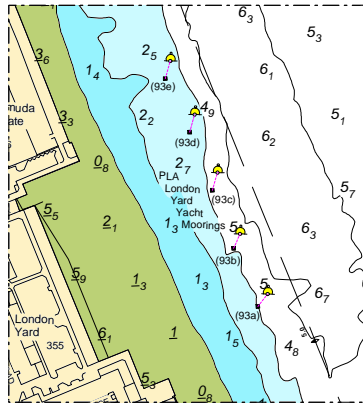


Chart: Greenwich Reach

PLA Chart No. 321  
HO Ref No. 113-321-190  
Previous Chart Correction: 2016/18

The accompanying block correction shows:

On 19/07/2017 the trot named "PLA London Yard Yacht Moorings" (93) was recovered and permanently removed from the River. This trot has been replaced with 5 sinker moorings each with a yellow buoy. These moorings will remain named "PLA London Yard Yacht Moorings" and be numbered (93a), (93b), (93c), (93d) & (93e)



For further information see the PLA hydrographic service website:

<http://www.pla.co.uk/Safety/PLA-Hydrographic-Service-Published-Surveys>