



PORT OF LONDON
AUTHORITY

Port of London Authority
Chart Correction Advice
Date:13th September, 2017

CCA No: 2017/28

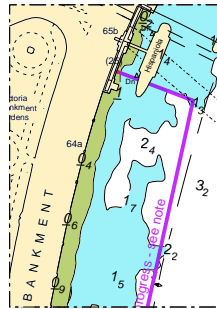


Chart: Lambeth Reach

PLA Chart No. 316
HO Ref No. 113-316-178
Previous Chart Correction: 2017/22

The accompanying block correction shows:

Two dolphins have been removed from the old Tattershall castle mooring alongside the Embankment at (64a)



For further information see the PLA hydrographic service website:

<http://www.pla.co.uk/Safety/PLA-Hydrographic-Service-Published-Surveys>