



PORT OF LONDON
AUTHORITY

Port of London Authority
Chart Correction Advice
Date: 13th June, 2018

CCA No: 2018/15

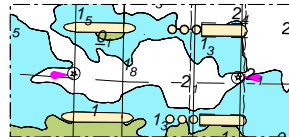


Chart: Kings Reach

PLA Chart No. 317
HO Ref No. 113-317-130
Previous Chart Correction: 2017/22

The accompanying block correction shows:

Navigation lights on Span #4 Blackfriars Bridge (upper side)
and Span #4 Blackfriars Railway Bridge (lower side)



For further information see the PLA hydrographic service website:

<http://www.pla.co.uk/Safety/PLA-Hydrographic-Service-Published-Surveys>