



Port of London Authority  
Chart Correction Advice  
Date: 10th September, 2019

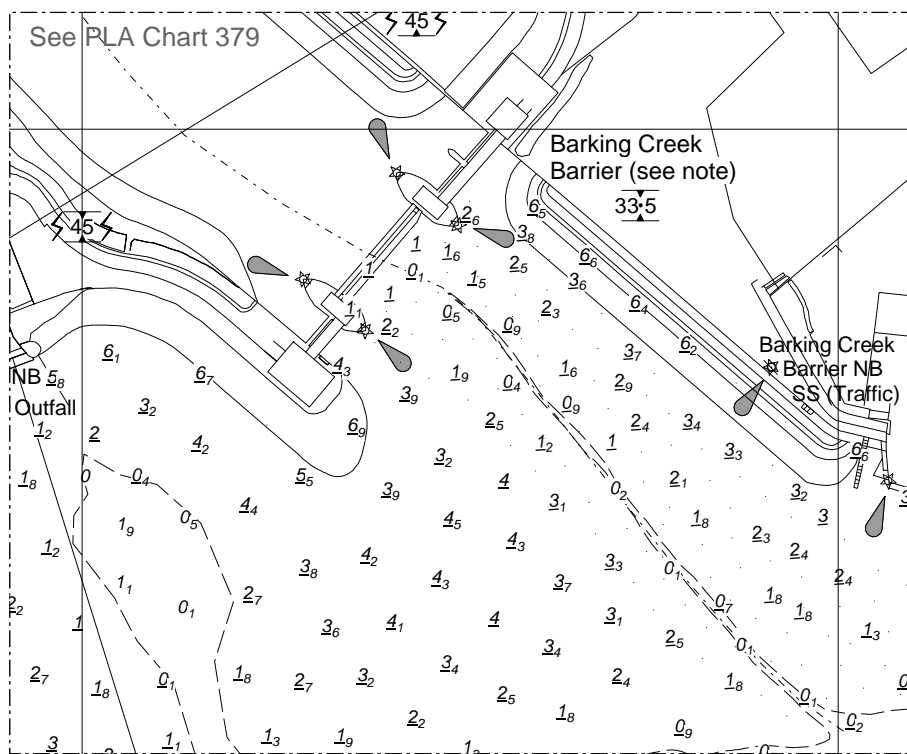


**CCA No: 2019/28**

Chart: Barking Reach

PLA Chart No. 326  
HO Ref No. 113-326-209  
Previous Chart Correction: 2017/3

The accompanying block correction shows:  
Revised depths on the approaches to Barking Creek  
(See also PLA Chart Correction Advice 2019/21 - New Edition of chart 379 Barking Creek)



For further information see the PLA hydrographic service website:

<http://www.pla.co.uk/Safety/PLA-Hydrographic-Service-Published-Surveys>