



PORT OF LONDON
AUTHORITY

Port of London Authority
Chart Correction Advice
Date: 29th May, 2020

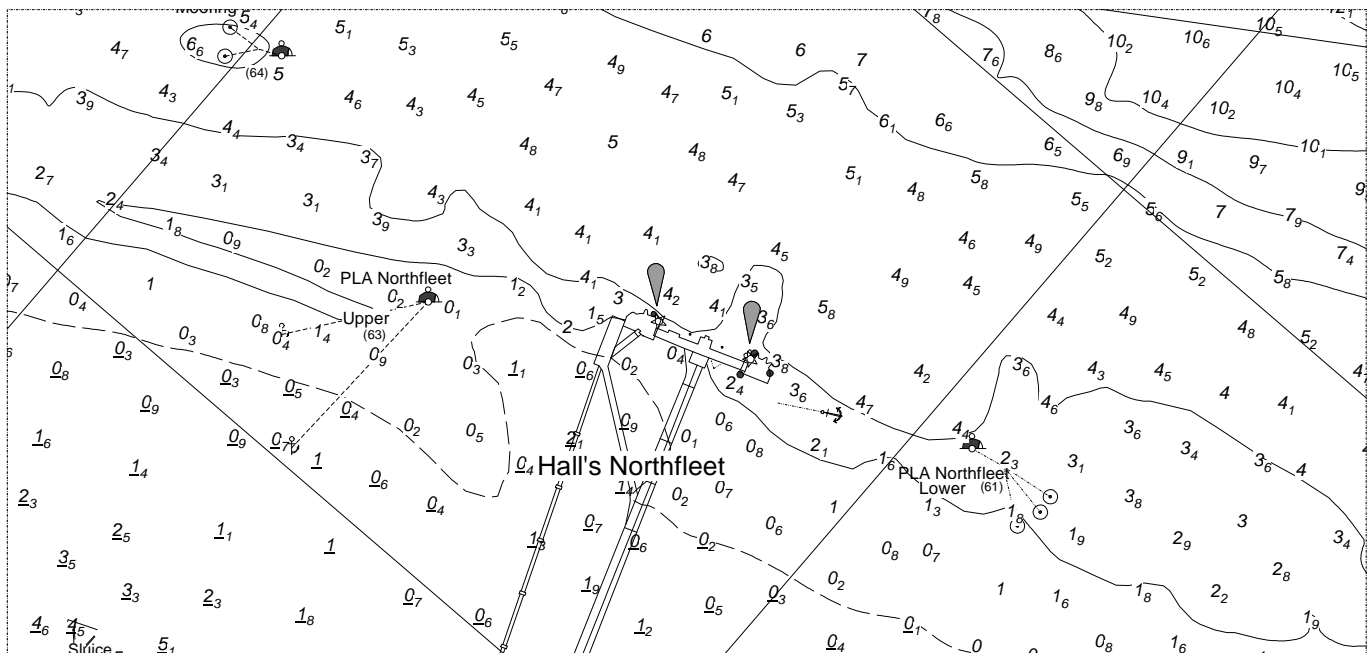


CCA No: 2020/11

Chart: Northfleet Hope

PLA Chart No. 334
HO Ref No. 113-334-284
Previous Chart Correction: 2019/34

The accompanying block correction shows:
Revised Mooring (63) and Depths in the vicinity of Hall's Jetty, Northfleet



For further information see the PLA hydrographic service website:

<http://www.pla.co.uk/Safety/PLA-Hydrographic-Service-Published-Surveys>