



Port of London Authority  
Chart Correction Advice  
Date: 25th January, 2021

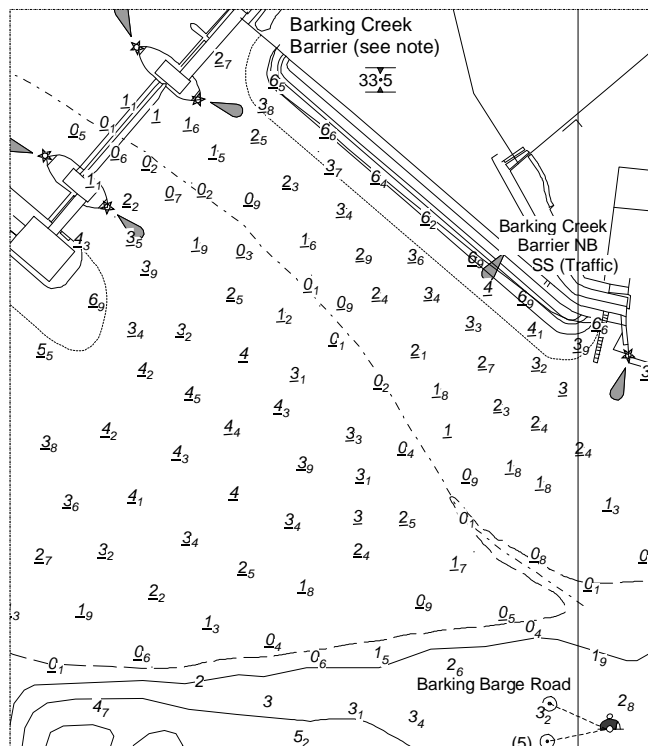


**CCA No: 2021/4**

Chart: Barking Reach

PLA Chart No. 326  
HO Ref No. 113-326-209  
Previous Chart Correction: 2020/03

The accompanying block correction shows:  
Revised depths and contours Barking Creek Approaches



For further information see the PLA hydrographic service website:

<http://www.pla.co.uk/Safety/PLA-Hydrographic-Service-Published-Surveys>