



Port of London Authority
Chart Correction Advice
Date: 4th January, 2021

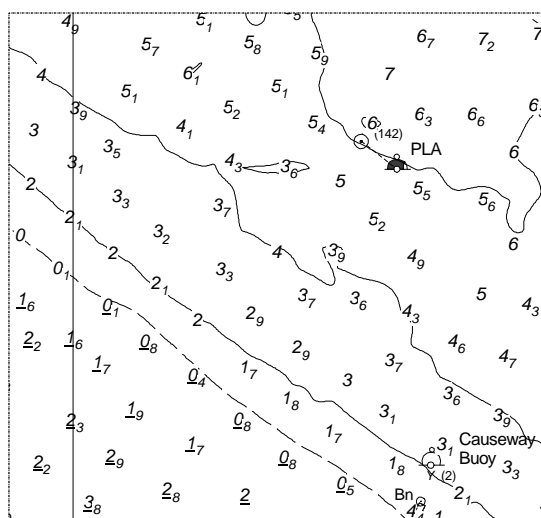


CCA No: 2021/6

Chart: Erith Reach

PLA Chart No. 329
HO Ref No. 113-329-118
Previous Chart Correction: 2020/17

The accompanying block correction shows:
Four screw moorings numbered (95), (96), (97) & (141) and four associated mooring buoys
have been pulled and permanently removed from the riverbed.



For further information see the PLA hydrographic service website:

<http://www.pla.co.uk/Safety/PLA-Hydrographic-Service-Published-Surveys>