



PORT OF LONDON
AUTHORITY

Port of London Authority
Chart Correction Advice
Date: 12 February, 2021

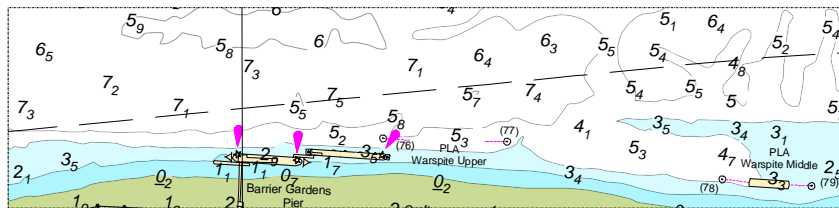


CCA No: 2021/08

Chart: Woolwich Reach (Upper)

PLA Chart No. 323
HO Ref No. 113-323-301
Previous Chart Correction: 2021/2

The accompanying block correction shows:
New pontoon at Barrier Gardens Pier and the removal
of the barge on Warspite Upper Mooring



For further information see the PLA hydrographic service website:

<http://www.pla.co.uk/Safety/PLA-Hydrographic-Service-Published-Surveys>