



PORT OF LONDON  
AUTHORITY

# Port of London Authority Chart Correction Advice Date: 7th May, 2021

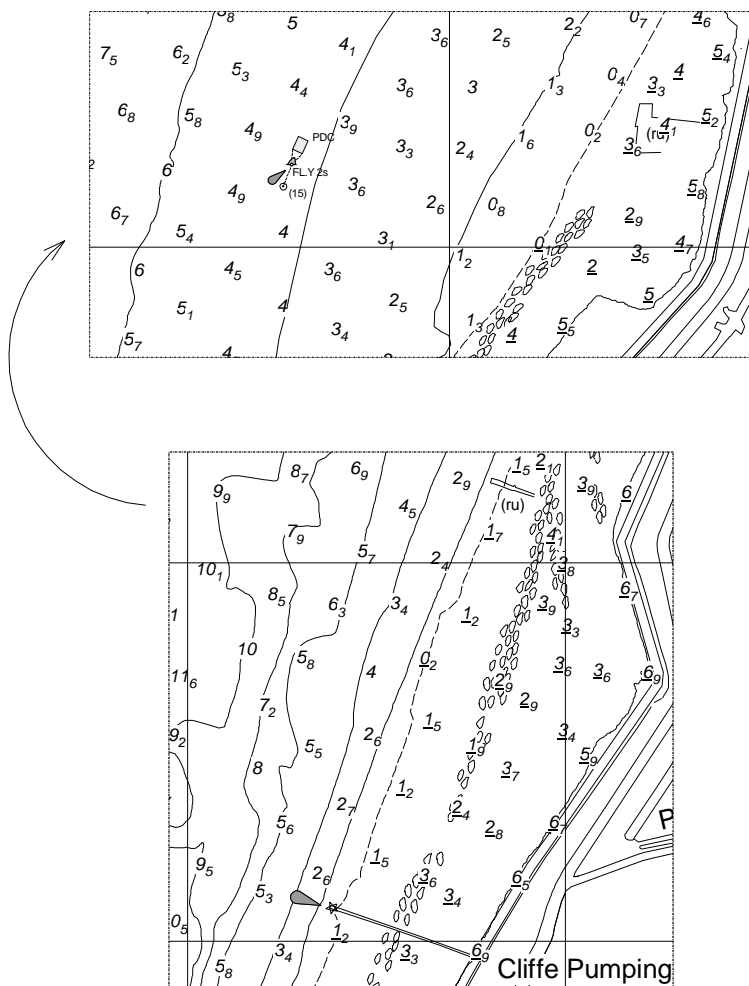


**CCA No: 2021/15**

Chart: Shornmead to Lower Hope Point

PLA Chart No. 339.  
HO Ref No. 113-339-047  
Previous Chart Correction: 2020/17

The accompanying block correction shows:  
The PDC has been moved downstream from Cliffe Pumping Station to Lower Hope Point



For further information see the PLA hydrographic service website:

<http://www.pla.co.uk/Safety/PLA-Hydrographic-Service-Published-Surveys>