

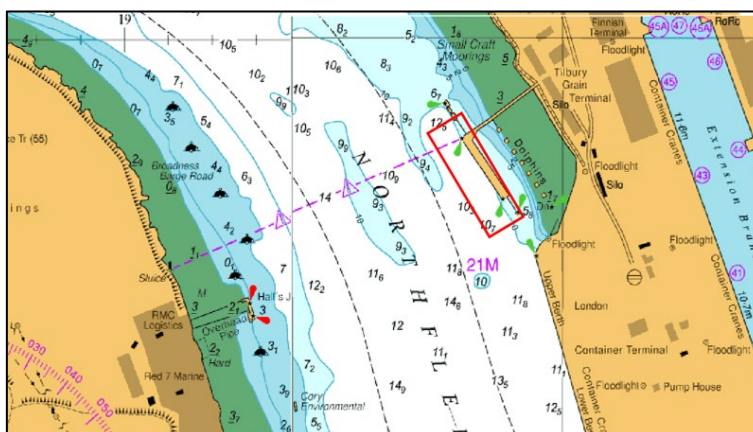
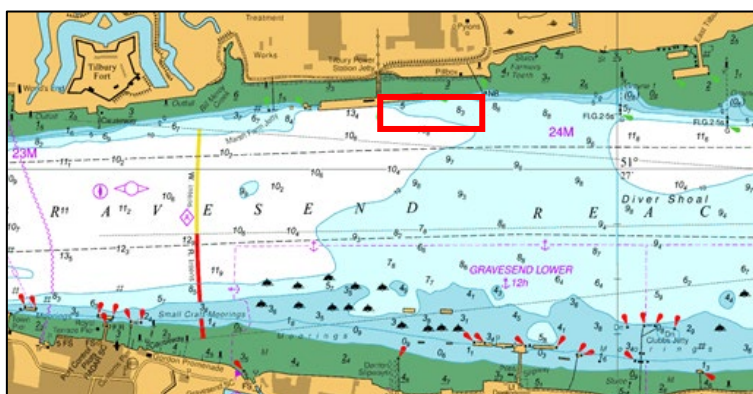


L05-24

NOTICE TO MARINERS
GRAVESEND REACH TO NORTHFLEET HOPE
DREDGING OPERATIONS

Table of Amendments	
14/02/2024	Expected completion date extended to 16/02/2024

On or around **30th January 2024** the vessel JENNY D will commence plough dredging operations at Tilbury 2 CMAT, Gravesend Reach and Tilbury Grain Terminal, Northfleet Hope. Dredging will take place on the ebb tide only, with expected completion around **16th February 2024**.



The vessel is required to display lights and signals as per the International Regulations for Preventing Collisions at Sea and maintain a listening watch on VHF channel 68.

Further details will be broadcast by **London VTS** on **VHF Channel 68**.

29/01/2024

Port of London Authority
 London River House, Royal Pier Road,
 Gravesend, Kent DA12 2BG

LYN KINDLEN-FUNNELL
Harbour Master

EXPIRY DATE: 19/02/2024

TO RECEIVE FUTURE NOTICES TO MARINERS BY **E-MAIL**,
 PLEASE REGISTER VIA OUR WEBSITE pla.co.uk/Subscription-to-Newsletter

Telephone calls, VHF radio traffic, CCTV and radar traffic images may be recorded in the
VTS Centres at Gravesend and Woolwich



View all Active Notice to Mariners using the above QR Code