

PORT OF LONDON
AUTHORITY

NOTICE TO MARINERS
SEA REACH

L08-24**RESEARCH EQUIPMENT RECOVERY**

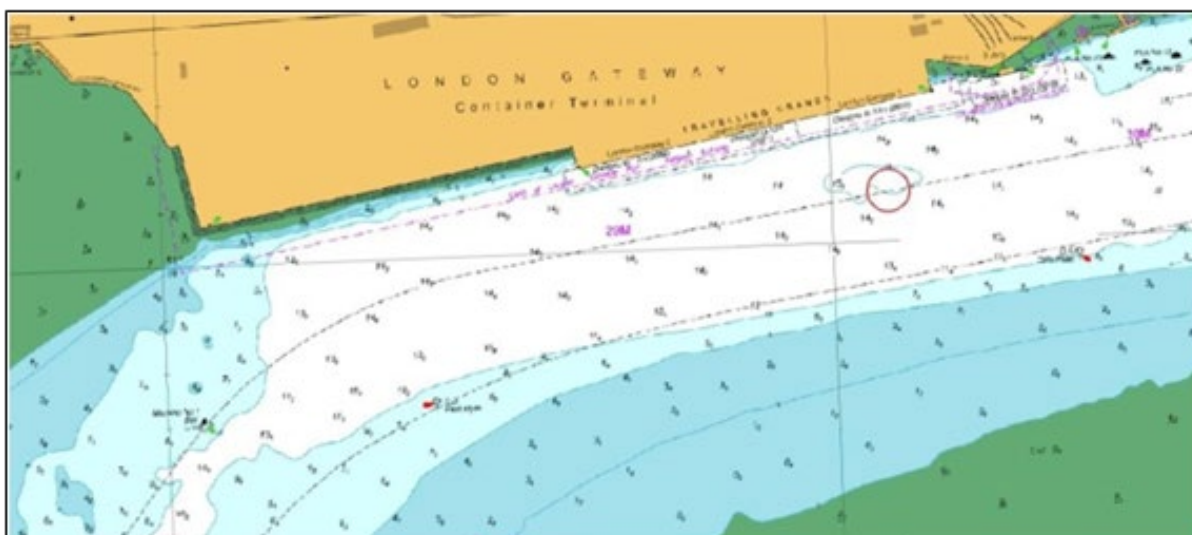
Mariners are hereby notified that recovery operations for tidal flow monitoring equipment will take place in the vicinity of London Gateway Port on or about **2nd February 2024**. The recovery will be conducted by divers from the vessel DRIFTWOOD 2, with the Port of London vessel MAPLIN providing positioning support.

To ensure safety of the recovery operations team, a 75m exclusion zone will be in effect around the area during diving operations. All passing vessels are required to keep a safe distance and navigate with caution, ensuring they minimize any wash.

These recovery operations will occur during the low water period. Both vessels will be always monitoring channel 68/69 and displaying appropriate international code flags:



The Chartlet below shows location of works:



Thameshaven (30.1094°N 00d 30.1596°E / LAT 51°30.1094'N LONG 000°30.1596'E)

01/02/2024

Port of London Authority
London River House, Royal Pier Road,
Gravesend, Kent DA12 2BG

MICHAEL SPICE
Assistant Harbour Master

EXPIRY DATE: 09/02/2024

TO RECEIVE FUTURE NOTICES TO MARINERS BY E-MAIL,
PLEASE REGISTER VIA OUR WEBSITE pla.co.uk/Subscription-to-Newsletter

Telephone calls, VHF radio traffic, CCTV and radar traffic images may be recorded in the
VTS Centres at Gravesend and Woolwich



View all Active Notice to Mariners
using the above QR Code

Requirements to proceed with caution or at slow speed will be made in accordance with the procedure set out in the Port of London Authority's [Port Information Guide](#), under 'London VTS', 'Section 4'.

For the latest information, contact **London VTS** on **VHF channel 68/69** or telephone 01474 562215.

EXPIRY DATE:
09/02/2024

Port of London Authority
London River House, Royal Pier Road,
Gravesend, Kent DA12 2BG

MICHAEL SPICE
Assistant Harbour Master
