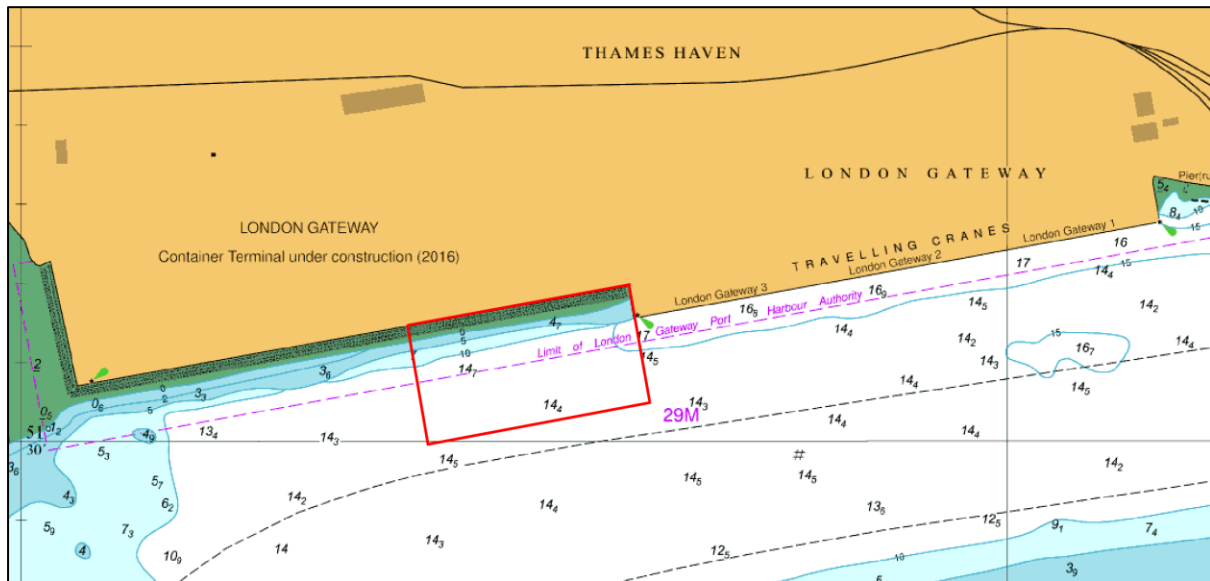


## NOTICE TO MARINERS L10 of 2020

### SEA REACH LONDON GATEWAY BERTH 4 CORE SAMPLING



On or about 27<sup>th</sup> March 2020 the survey vessel FLATHOLM will commence coring work at a number of locations off the site of London Gateway Berth 4 for approximately 3 days.

No coring will be undertaken in the vicinity of Berth 3 during berthing or unberthing operations and the FLATHOLM will maintain a 100 metre separation from any vessel moored at Berth 3.

Whilst undertaking coring, the FLATHOLM will be restricted in her ability to manoeuvre and the lights and shapes as prescribed in Rule 27 of the International Regulations for Preventing Collisions at Sea 1972 will be displayed, namely:

- By day, three black shapes in a vertical line the highest and lowest of which are balls and the middle one a diamond.
- By night, three all-round lights in a vertical line the highest and lowest of which are red and the middle one white.

London VTS will broadcast requests for vessels to “proceed with caution” or “proceed at slow speed”, as described in Permanent Notices to Mariners 4 of 2014 as required by the works. International Code Flags “Romeo Yankee” will be displayed when this is in effect.

Further details will be broadcast by London VTS on **VHF Channel 68**.

**26 March 2020**

Port of London Authority  
London River House, Royal Pier Road,  
Gravesend, Kent DA12 2BG

**Cathryn Spain - Harbour  
Master (Lower)**



EXPIRY DATE: 27<sup>th</sup> April 2020  
TO RECEIVE FUTURE NOTICES TO MARINERS BY **E-MAIL**,  
PLEASE REGISTER VIA OUR WEBSITE [www.pla.co.uk](http://www.pla.co.uk)  
Telephone calls, VHF radio traffic, CCTV and radar traffic images may  
be recorded in the VTS Centres at Gravesend and Woolwich  
All Current Notices to Mariners can be found here -  
<http://www.pla.co.uk/Safety/Regulations-and-Guidance/Notices-to-Mariners/Notices-to-Mariners>

