

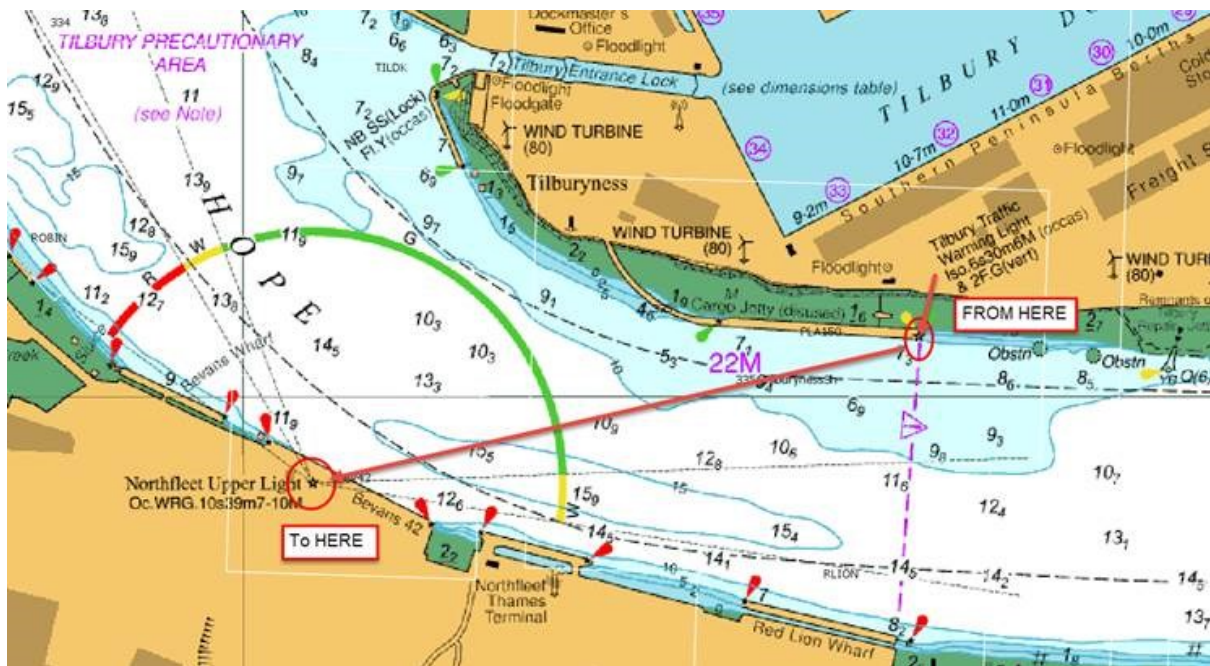
NOTICE TO MARINERS L13 of 2021

GRAVESEND REACH TILBURY TRAFFIC WARNING LIGHT RELOCATION

On 25th June 2021 Tilbury Traffic Warning Light will be relocated to accommodate works at Tilbury. The light will be repositioned at Northfleet Tower, 10-15m lower than the Northfleet Sector light.

The light will be inoperable during the transfer and is expected to be fully operational in the new location by 29th June. Further updates will be given by London VTS on Channel 68.

The chartlet below shows the new relocation of the light:



24 June 2021

Port of London Authority
London River House, Royal Pier Road,
Gravesend, Kent DA12 2BG

Stephanie Smith
Deputy Harbour Master



EXPIRY DATE: 31st July 2021
TO RECEIVE FUTURE NOTICES TO MARINERS BY E-MAIL,
PLEASE REGISTER VIA OUR WEBSITE www.pla.co.uk
Telephone calls, VHF radio traffic, CCTV and radar traffic images may be recorded in the VTS Centres at
Gravesend and Woolwich
All Current Notices to Mariners can be found here - <http://www.pla.co.uk/Safety/Regulations-and-Guidance/Notices-to-Mariners/Notices-to-Mariners>