

NOTICE TO MARINERS L14 of 2020

LONG REACH

NAVIGATOR TERMINAL BERTH 1

DREDGING OPERATIONS & DOLPHIN REPLACEMENT WORKS

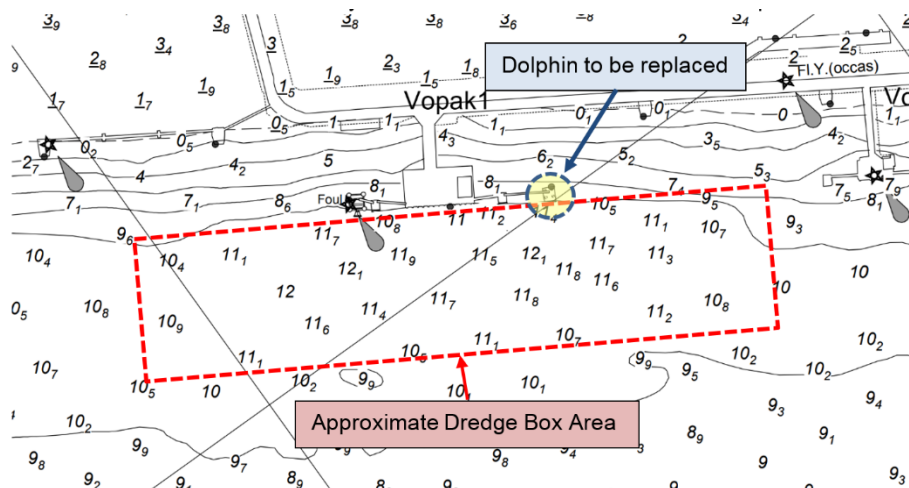
On or about 17th August 2020 works will commence at Navigator Terminal Berth 1 to replace and upgrade the existing downstream dolphin and increase the depths of the dredge box around the berth.

The dolphin replacement works will involve a variety of barges and support vessels including jack-up barge SEA7, flat-tops NEPTUNE, DEVELOPER & SEAVOYAGER, safety vessel DIVECO 5 and various tugs. The works will involve the removal of the existing downstream dolphin structure and replacement with a new structure, including heavy lifting operations.

In addition, dredging operations will be conducted over the low water period by excavator from the spud leg pontoon GPS BOXER assisted by tug GPS IBERIA working in the approximate area indicated in the chartlet below.

London VTS will broadcast requests for vessels to “proceed with caution” or “proceed at slow speed”, as described in Permanent Notices to Mariners 4 of 2014 as required by the works. International Code Flags “Romeo Yankee” will be displayed when this is in effect.

Further details will be broadcast by London VTS on VHF Channel 68 as required.



13 August 2020

Port of London Authority
London River House, Royal Pier Road,
Gravesend, Kent DA12 2BG

Cathryn Spain
Harbour Master (Lower)



TO RECEIVE FUTURE NOTICES TO MARINERS BY **E-MAIL**,
PLEASE REGISTER VIA OUR WEBSITE www.pla.co.uk
Telephone calls, VHF radio traffic, CCTV and radar traffic images may
be recorded in the VTS Centres at Gravesend and Woolwich
All Current Notices to Mariners can be found here -
<http://www.pla.co.uk/Safety/Regulations-and-Guidance/Notices-to-Mariners/Notices-to-Mariners>

