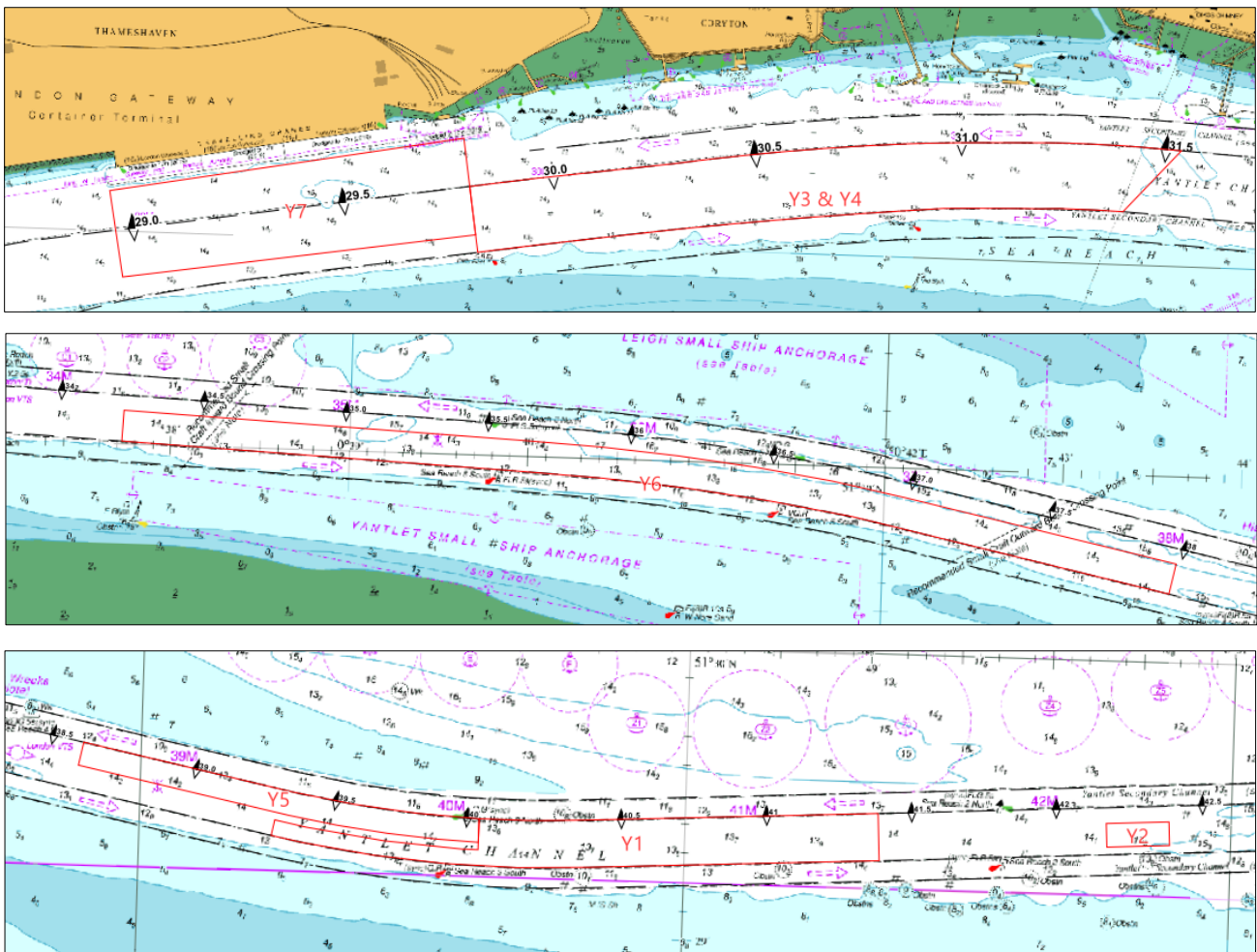


NOTICE TO MARINERS L16 of 2020

SEA REACH DREDGING OPERATIONS

On or about 12th October 2020, a programme of maintenance dredging will commence in Sea Reach for a period of approximately 18 days. The dredgers 'ARTEVELDE' (97.5m LOA) and 'DHAMRA' (31m LOA) will be conducting Water Injection/Agitation Dredging on the ebb tide at a number of locations between London Gateway and Sea Reach 1 Buoys, as indicated in the chartlets below. The survey vessel GUARDIAN will also be working in the area, in support of the operations.



The ARTEVELDE will be under the conduct of a PLA Pilot at all times whilst underway, and will be capable of re-positioning to facilitate navigation, provided sufficient notice is given. During dredging operations (on the ebb tide only), the positions of the ARTEVELDE and DHAMRA will be included in the routine half-hourly broadcasts by London VTS.

Whilst the ARTEVELDE is undertaking dredging operations, all vessels intending to transit the area that require the use of the main Yantlet Channel must advise London

VTS of their ETA at the ARTEVELDE's location, a minimum of 30 mins in advance, to ensure effective traffic management.

Further details will be broadcast by London VTS on VHF Channels 68 & 69.

**08th October
2020**

Port of London Authority
London River House, Royal Pier Road,
Gravesend, Kent DA12 2BG

**Miles Featherstone
Deputy Harbour Master**



EXPIRY DATE: 08th November 2020
TO RECEIVE FUTURE NOTICES TO MARINERS BY **E-MAIL**,
PLEASE REGISTER VIA OUR WEBSITE www.pla.co.uk
**Telephone calls, VHF radio traffic, CCTV and radar traffic images may
be recorded in the VTS Centres at Gravesend and Woolwich**
All Current Notices to Mariners can be found here -
[http://www.pla.co.uk/Safety/Regulations-and-Guidance/Notices-to-](http://www.pla.co.uk/Safety/Regulations-and-Guidance/Notices-to-Mariners/Notices-to-Mariners)
[Mariners/Notices-to-Mariners](http://www.pla.co.uk/Safety/Regulations-and-Guidance/Notices-to-Mariners/Notices-to-Mariners)

