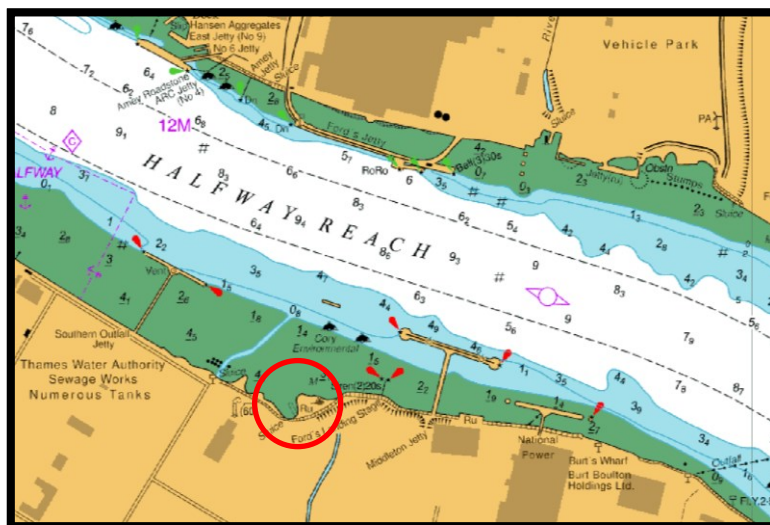


NOTICE TO MARINERS L1 of 2020

HALFWAY REACH GREAT BREACH PUMPING STATION OUTFALL & FORESHORE WORKS



Starting the week commencing 6th January 2020 equipment will be mobilised to the Great Breach Pumping Station in order to restore functionality to its outfall and carry out additional works in the vicinity.

During the works a landing craft will be utilised by contractors working on the foreshore along with a jet-float working platform anchored to the foreshore to provide safe access to the tidal flap valve. Temporary scaffolding will also be constructed adjacent to the outfall structure.

At times a 'Proceed with Caution' will be in place and broadcasts made by London VTS on VHF Channel 14. Vessels involved in the lifting operations will display the international code flags "Romeo Yankee" at all times when the 'Proceed with Caution' is in place and will maintain a listening watch on VHF Channel 14.

The works are expected to last until the end of April 2020.

For the latest information contact London VTS on VHF Channel 14 or by telephone on 0203 2607711.

3 January 2020

Port of London Authority
London River House, Royal Pier Road,
Gravesend, Kent DA12 2BG

BOB BAKER
CHIEF HARBOUR MASTER



EXPIRY DATE: 1st May 2020
TO RECEIVE FUTURE NOTICES TO MARINERS BY **E-MAIL**,
PLEASE REGISTER VIA OUR WEBSITE www.pla.co.uk
**Telephone calls, VHF radio traffic, CCTV and radar traffic images may
be recorded in the VTS Centres at Gravesend and Woolwich**
All Current Notices to Mariners can be found here -
<http://www.pla.co.uk/Safety/Regulations-and-Guidance/Notices-to-Mariners/Notices-to-Mariners>

