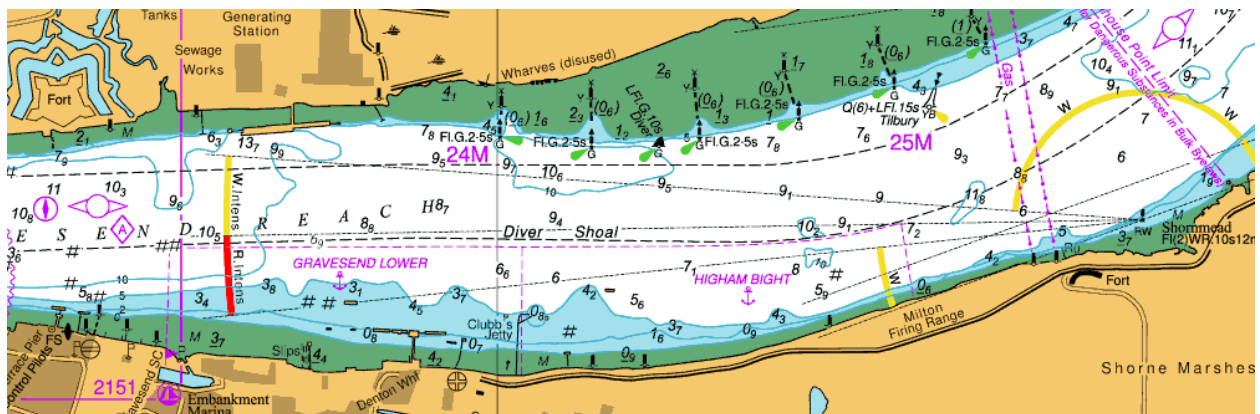


NOTICE TO MARINERS L20 of 2018

GRAVESEND REACH LOWER RESTRICTED NAVIGATION

A restriction to non-essential operations will be in force with immediate effect south of the authorised navigation channel from Denton Wharf to Shornmead Light. This is as a result on the ongoing presence of a beluga whale, which is a IUCN red listed species, in Gravesend Reach Lower.

This restriction is on all non-essential vessels not required to be in this area. Any vessels required to operate in this area are required to keep a close lookout at all time, keep speed to a minimum and maintain a minimum distance of 100m from the whale.



Vessel Traffic Services will be monitoring the area throughout the restriction along with assistance from the Harbour Service Launch.

For the latest information about the restriction contact London VTS on VHF Channel 68 or by telephone on 01474 560311.

Additional information on the whale can be found at <http://pla.co.uk/BDMLR-and-PLA-joint-press-statement>.

**27th September
2018**

Port of London Authority
London River House, Royal Pier Road,
Gravesend, Kent DA12 2BG

**BOB BAKER
CHIEF HARBOUR MASTER**



TO RECEIVE FUTURE NOTICES TO MARINERS BY **E-MAIL**,
PLEASE REGISTER VIA OUR WEBSITE www.pla.co.uk
Telephone calls, VHF radio traffic, CCTV and radar traffic images may
be recorded in the VTS Centres at Gravesend and Woolwich

