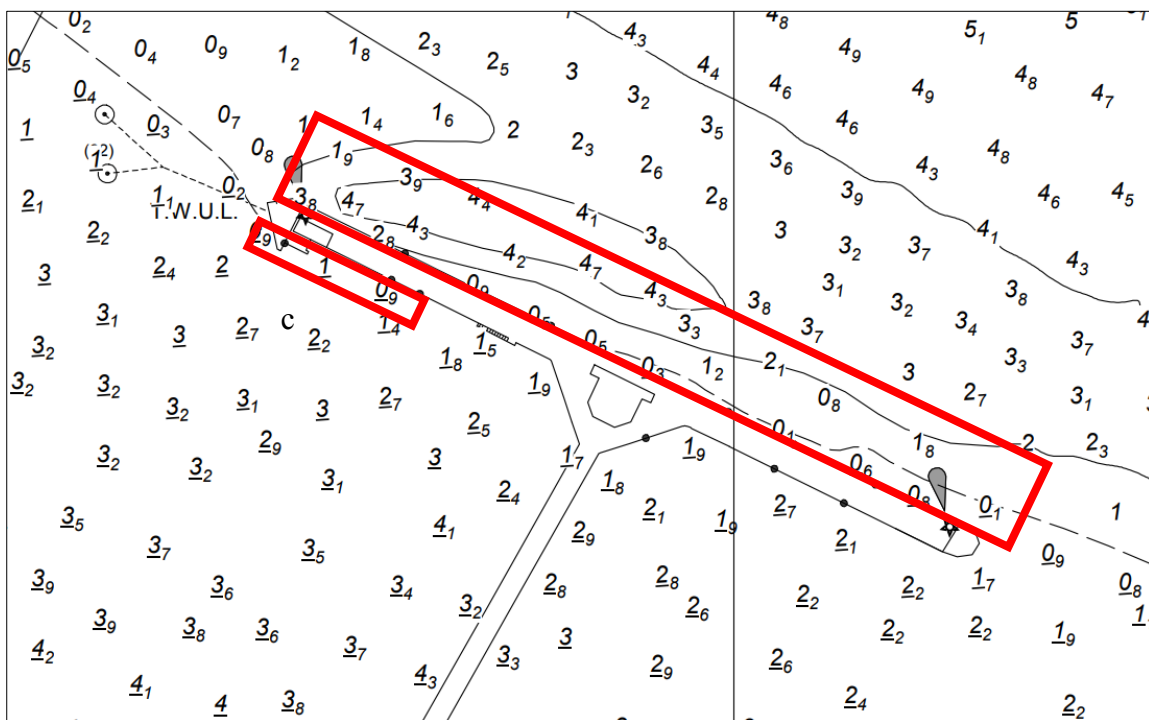


NOTICE TO MARINERS L20 of 2020

HALFWAY REACH SOUTHERN OUTFALL JETTY DREDGING OPERATIONS

On or about 21st November 2020, contractors working on behalf of Thames Water will commence dredging operations in the vicinity of the Southern Outfall Jetty. It is anticipated that these operations will take six days to complete. The chartlet below depicts the location and approximate marine footprint of the works:



The dredging works will be undertaken by the pusher tug HAVIK and water injection barge BALDR, and will display the lights and shapes as prescribed in Rule 27 of the International Regulations for Preventing Collisions at Sea 1972 namely:



- By day, three black shapes in a vertical line the highest and lowest of which are balls and the middle one a diamond.
- By night, three all-round lights in a vertical line the highest and lowest of which are red and the middle one white.

Further details will be broadcast by London VTS on VHF Channel 14.

**17 November
2020**

Port of London Authority
London River House, Royal Pier Road,
Gravesend, Kent DA12 2BG

**Miles Featherstone
Deputy Harbour Master**

 <p>ISO 9001 - ISO 14001 OHSAS 18001</p>	<p>EXPIRY DATE: 4th December 2020 TO RECEIVE FUTURE NOTICES TO MARINERS BY E-MAIL, PLEASE REGISTER VIA OUR WEBSITE www.pla.co.uk Telephone calls, VHF radio traffic, CCTV and radar traffic images may be recorded in the VTS Centres at Gravesend and Woolwich All Current Notices to Mariners can be found here - http://www.pla.co.uk/Safety/Regulations-and-Guidance/Notices-to-Mariners/Notices-to-Mariners</p>	 <p>PORT OF LONDON AUTHORITY</p>
---	---	---