

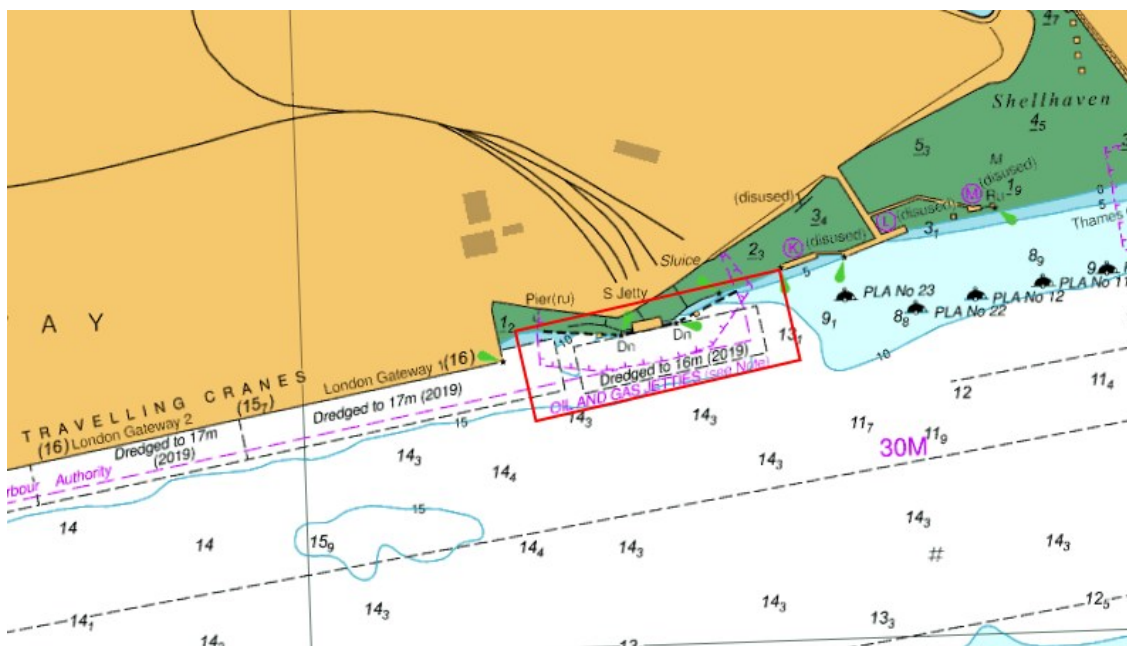
NOTICE TO MARINERS L21 of 2021

YANTLET CHANNEL SHELL HAVEN JETTY WORKS

On or about 16th November 2021, works will commence at Shell Haven to replace Marine Loading Arms. Operations will take place using the crane barge FORTH ATLAS and tug FORTH TROJAN. The works will be conducted between 0700 – 1800 daily and are expected to be completed around 24th November 2021.

Any request to proceed with caution or at slow speed will be made by London VTS on channel 68 in accordance with the PLA Port Information Guide, under 'London VTS', section 4. Further details will be broadcast by London VTS.

The chartlet below shows the location of the works.



Stephanie Smith
Deputy Harbour Master

04th November 2021

Port of London Authority
London River House, Royal Pier Road,
Gravesend, Kent DA12 2BG

EXPIRY DATE: 05/12/2021

TO RECEIVE FUTURE NOTICES TO MARINERS BY E-MAIL,

PLEASE REGISTER VIA OUR WEBSITE www.pla.co.uk

Telephone calls, VHF radio traffic, CCTV and radar traffic images may be recorded in the VTS Centres at Gravesend and Woolwich

All Current Notices to Mariners can be found here - <http://www.pla.co.uk/Safety/Regulations-and-Guidance/Notices-to-Mariners/Notices-to-Mariners>