

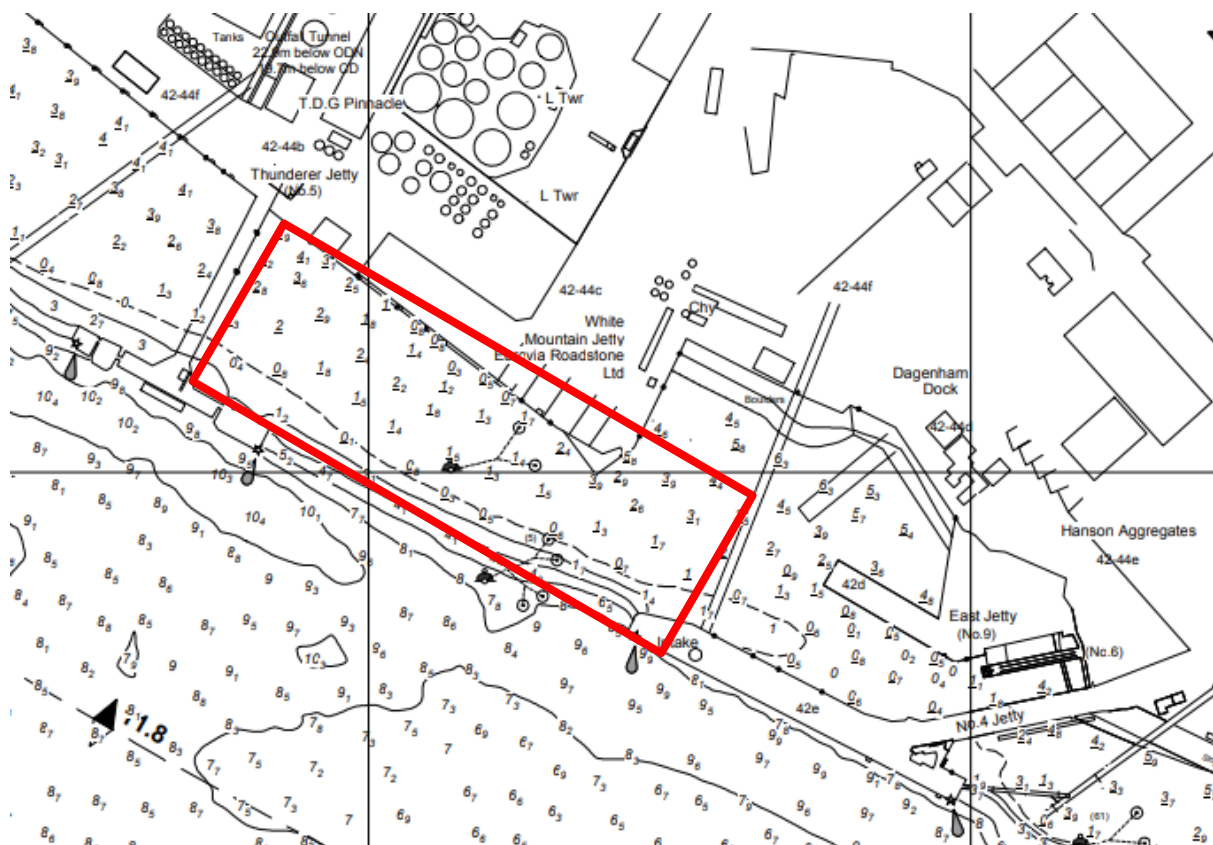
## **NOTICE TO MARINERS** L5 of 2021

### **HALFWAY REACH** **DREDGING OPERATIONS**

On or about 28<sup>th</sup> April 2021, marine contractors working on behalf of Armac Shipping Services will be undertaking plough dredging operations at White Mountain Wharf, which will take approximately one-week.

In order to accommodate these works, the workboat EMILIA D will undertake plough dredging on the approach channel to White Mountain Wharf. All dredge activity will be undertaken on the inside of the line of Thunder and No. 4 Jetties to minimise the impact on navigation. Dredge operations will take place two and half hours after low water at Tilbury.

The chartlet below indicates the approximate footprint of the marine works.



The dredge vessel should display lights and signals as per the International Regulations for Prevention of Collision at Sea (27).

London VTS will broadcast requests for vessels to “Proceed at Slow Speed” or” Proceed with Caution” as required by the works. Such requests will be broadcast by London VTS on Channel 14, as per the requirements detailed in Notice to Mariners No. 8 of 2021.

Further details will be broadcast by **London VTS** on VHF Channel 14.

---

**12 April 2021**

Port of London Authority  
London River House, Royal Pier Road,  
Gravesend, Kent DA12 2BG

**Darren Knight**  
Deputy Harbour Master



EXPIRY DATE: 10<sup>th</sup> May 2021  
TO RECEIVE FUTURE NOTICES TO MARINERS BY **E-MAIL**,  
PLEASE REGISTER VIA OUR WEBSITE [www.pla.co.uk](http://www.pla.co.uk)  
**Telephone calls, VHF radio traffic, CCTV and radar traffic images may be recorded in the VTS Centres at  
Gravesend and Woolwich**  
**All Current Notices to Mariners can be found here - <http://www.pla.co.uk/Safety/Regulations-and-Guidance/Notices-to-Mariners/Notices-to-Mariners>**