

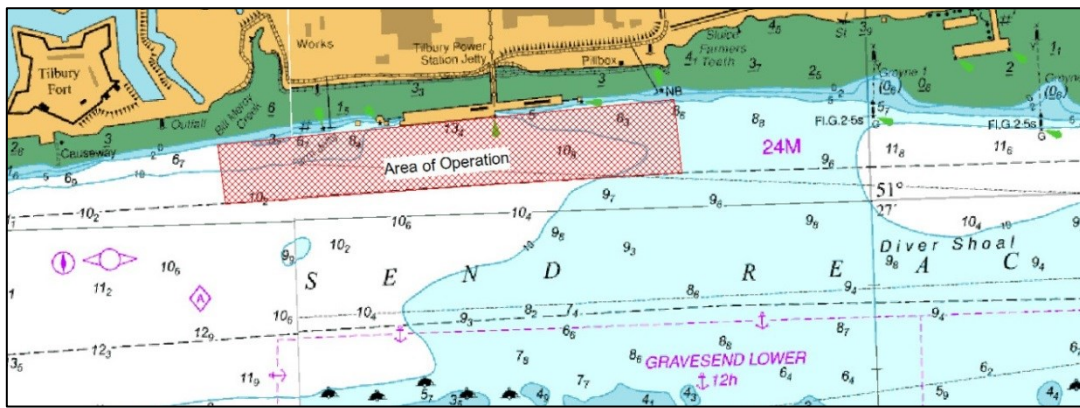
NOTICE TO MARINERS L8 of 2020

GRAVESEND REACH

TILBURY2

MARINE WORKS

This notice supersedes L55 of 2019



Final stages of marine works are now taking place for the creation of two new RoRo berths and a CMAT berth on the former Tilbury Power Station Jetty site.

The jack-up barge SKYLIFT is currently on site for the installation of the pontoon restraint piles which expected to take approximately 7 to 10 days.

During the week commencing 16th March 2020 the linkspan bridge and pontoon are expected to be installed followed by commissioning works.

At times during the construction works the jetty lights will not be displayed as per published nautical charts. The eastern and western limits of the works will be marked by green aids to navigation at all times. Isolated structures will be marked individually. Charts will be updated on completion of the works.

Throughout the works periods there will be requirements for vessels to 'Proceed with Caution' with this being broadcast by London VTS on VHF Channel 68 in conjunction with marine craft displaying International Code flags "Romeo Yankee". All vessels involved with the works will maintain a continuous listening watch on VHF Channel 68.

For the latest information contact London VTS on VHF Channel 68 or by telephone on 01474 560311.

10 March 2020

Port of London Authority
London River House, Royal Pier Road,
Gravesend, Kent DA12 2BG

Cathryn Spain
Harbour Master – (Lower)



TO RECEIVE FUTURE NOTICES TO MARINERS BY **E-MAIL**,
PLEASE REGISTER VIA OUR WEBSITE www.pla.co.uk
**Telephone calls, VHF radio traffic, CCTV and radar traffic images may
be recorded in the VTS Centres at Gravesend and Woolwich**
All Current Notices to Mariners can be found here -
<http://www.pla.co.uk/Safety/Regulations-and-Guidance/Notices-to-Mariners/Notices-to-Mariners>

