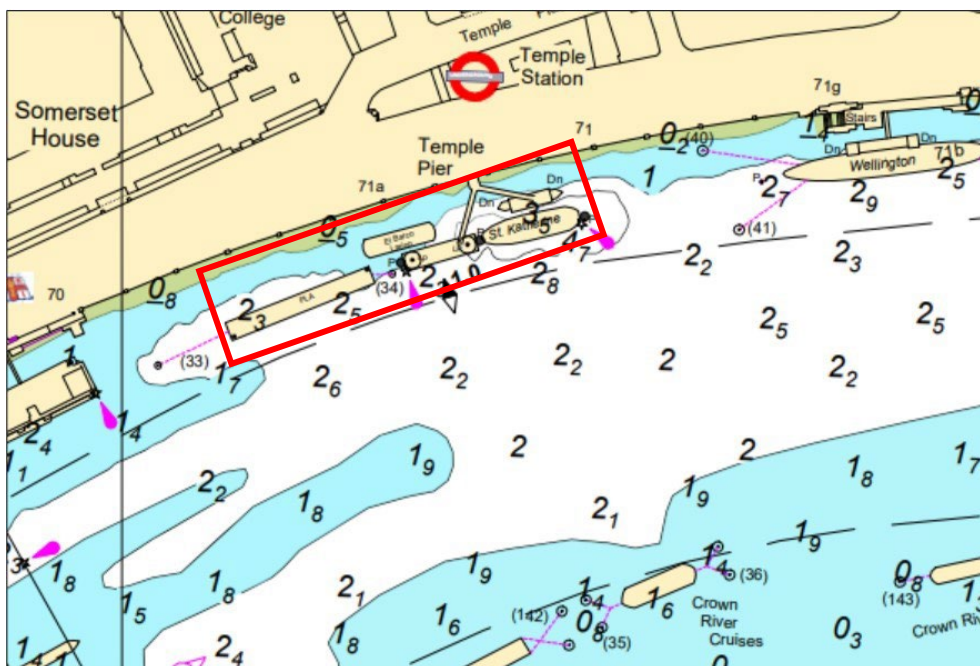


KINGS REACH DIVING OPERATIONS

Mariners are advised that diving operations will be conducted at Temple Pier from **13th January** and are expected to last no longer than 7 days. These operations are being carried out to attend a sunken vessel. The works will take place between the hours of 0700 and 1800. The location of works is indicated on the chartlet below:



Diving operations will take place at Temple Pier, utilising the vessel **CHILLI DOG** and the timing of these operations will be coordinated with the high tide and low tide slack water periods to ensure optimal conditions.

The scope of the works will involve various tasks such as lifting and rigging operations, installing blanking plates and setting up pumping systems.

Requests for vessels to proceed with caution or pass at slow speed will be made by London VTS on VHF ch.14, in accordance with the PLA [Port Information Guide](#), under "London VTS", section 4. Any further details will be broadcast by London VTS.

11/01/2024

Port of London Authority
London River House, Royal Pier Road,
Gravesend, Kent DA12 2BG

MICHAEL SPICE
Assistant Harbour Master

EXPIRY DATE: 21/01/2024

TO RECEIVE FUTURE NOTICES TO MARINERS BY E-MAIL,
PLEASE REGISTER VIA OUR WEBSITE pla.co.uk/Subscription-to-Newsletter

Telephone calls, VHF radio traffic, CCTV and radar traffic images may be recorded in the
VTS Centres at Gravesend and Woolwich



View all Active Notice to Mariners
using the above QR Code

Vessel 'CHILLI DOG' should display International Code Flags 'Romeo Yankee (RY)' and 'Alpha (A)' as appropriate:

RY:



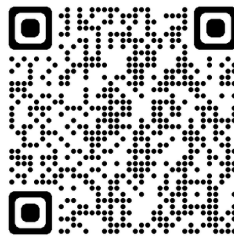
A:



Diver's point of
entry to water:



Mariners are requested to pass Temple Pier with **extreme caution**. Mariners must ensure that wash and draw off are kept to a minimum when passing the site. Notice [M02-24](#) remains in effect.



PLA Port Information Guide